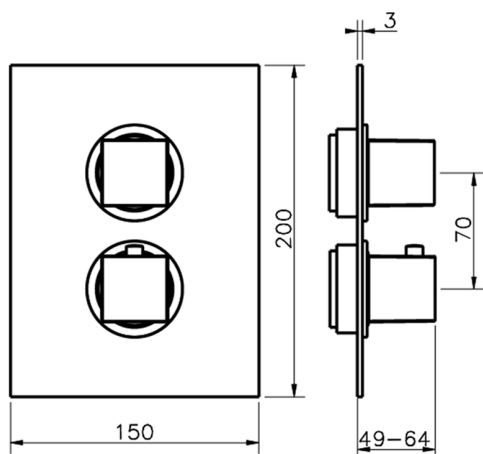








## Exposed part for con.thermo.shower valve, 2-outlet ROADSTER ACCENT\_RA018100



MODEL **RA018100**

Exposed part for con.thermo.shower valve,  
2-outlet, with 2 outlet devistop, without concealed  
part, for item ZA018101

### AVAILABLE FINISHINGS

-  **21** 21 Chrome
-  **2B** 2B Polished Nickel
-  **2F** 2F Brushed Nickel
-  **2Q** 2Q Black Titanium
-  **40** 40 Matt Black
-  **4Q** 4Q Matt White

### CHARACTERISTICS

Installation **Concealed**

Required concealed parts **ZA018101**



### Thermostatic

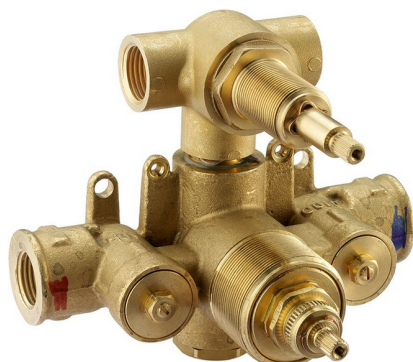
The Cisal thermostatic is your  
personal water manager, helping you  
to handle, control and save water and  
energy.



## Concealed thermostatic shower valve, 2-outlets CONCEALED\_ZA018101

MODEL **ZA018101**

Concealed thermostatic shower valve, 2-outlets, with 1/2" 2 outlet devistop cartridge, without trim kit



AVAILABLE FINISHINGS



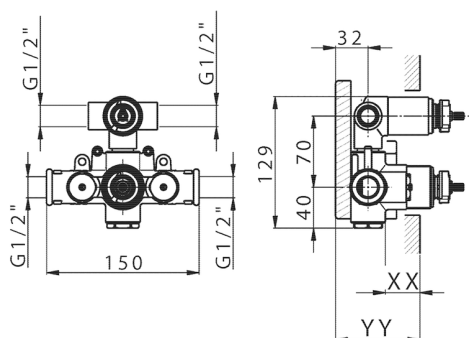
**04** 04 Without finishing

CHARACTERISTICS

Concealed **1**

Cartridge Spare Parts **24.04A.PP**

**8x20 Plus P Thermostatic Valve**



Piastra/Plate/Plaque/Platte/Placa

2-3mm: XX 25-40 YY 76-91

10 mm: XX 16-31 YY 65-80



### DeviaStop

The Cisal Devia Stop technology allows to adjust the water flow and to direct it to the selected output point (overhead soaker, hand shower, etc).



### Thermostatic

The Cisal thermostatic is your personal water manager, helping you to handle, control and save water and energy.



2024-05-08