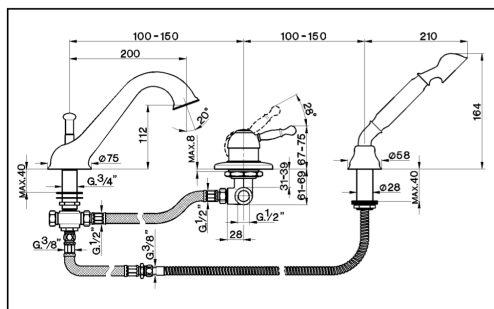


Deck mounted 3-hole single lever bath mixer ARCANA ROYAL_AY001260

cisal

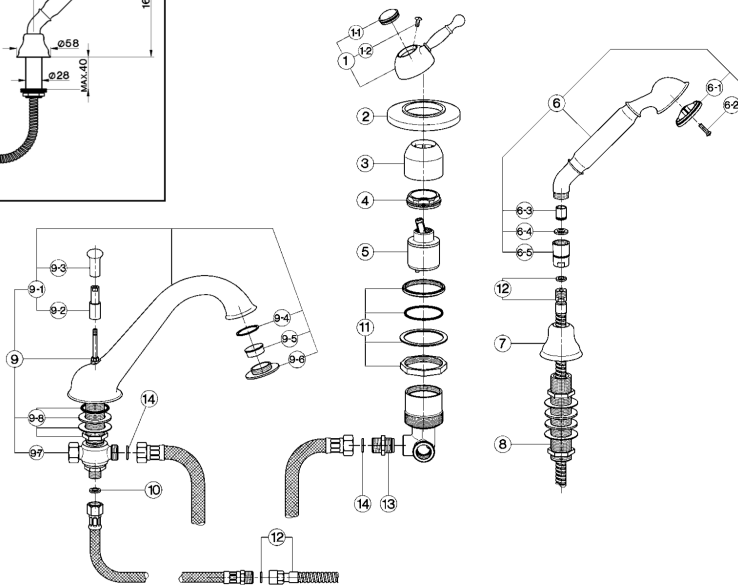
AY 00126



- Batteria bordo vasca a 3 fori
- Deck-mounted 3-hole bath mixer
- 3 Loch - Einhand-Badebatterie
- Mitigeur bain/douche sur gorge

| bar | PORTATA BOCCA DI EROGAZIONE * SPOUT FLOW RATE DURCHFLOSS WANNENEINLAUF DÉBIT BEC DÉVERSEUR l/min. |
|-----|---|
| 0.5 | 9 |
| 1 | 13 |
| 2 | 18 |
| 3 | 22 |
| 4 | 25 |
| 5 | 28 |

* con resistenza silenziosa della classe di portata C (30 l/min. a 3 bar)
with hydraulic resistance of flow rate class C (30 l/min. at 3 bar)
mit geräuscharmen Widerstand der Durchflussklasse C (30 l/min. bei 3 bar)
avec aérateur classe C (30 l/min. à 3 bar)



| NR. | DESCRIZIONE DESCRIPTION BESCHREIBUNG DESCRIPTION | N. CODICE CODE NO. WERKSNR. NR. CODE | NR. | DESCRIZIONE DESCRIPTION BESCHREIBUNG DESCRIPTION | N. CODICE CODE NO. WERKSNR. NR. CODE | NR. | DESCRIZIONE DESCRIPTION BESCHREIBUNG DESCRIPTION | N. CODICE CODE NO. WERKSNR. NR. CODE |
|-----|---|---|-----|---|---|-----|--|---|
| 1 | Leva monocomando "AY" Lever "AY" Hebel "AY" Levier "AY" | ZZ 90370 0 | 6-2 | Vite di fissaggio diffusore per doccia in ABS Fixing screw for spray-kit ABS handshower Befestigungsschraube f. Einsatz l. Brause in ABS Vis de fixation diffuseur pour douchette en ABS | ZZ 93401 0 | 9-4 | Guarnizione NBR 70 SH. 32x28,2x1 Gasket NBR 70 SH. 32x28,2x1 Dichtung NBR 70 SH. 32x28,2x1 Joint NBR 70 SH. 32x28,2x1 | ZZ 92995 0 |
| 1-1 | Placchetta per leva "AY" Abdeckkappe l/Hebel "AY" Plaquelette levier "AY" | ZZ 93048 0 | 6-3 | Valvola anti-ritorno Ø15 per doccia Back-flow valve Ø15 Durchflussverhinderer Ø15 Clapet anti-retour Ø15 | ZZ 92956 0 | 9-5 | Rompigetto per bocca batteria vasca Antisplash for bath spout Strahlregler Brise-jet pour bain/douche | ZZ 92697 0 |
| 1-2 | Vite M.4,5x15 lb. tc. Screw M.4,5x15 Schraube M.4,5x15 Vis M.4,5x15 | ZZ 92641 0 | 6-4 | Guarnizione fibra 18,5x11x2 Gasket rubber 18,5x11x2 Fiberdichtung 18,5x11x2 Joint en fibre 18,5x11x2 | ZZ 92714 0 | 9-6 | Bordino bocca batteria vasca "AR" Overfill bath spout "AR" Kante l/WB - Auslauf "AR" Garniture B/D "AR" | ZZ 92626 0 |
| 2 | Piastra monocomando doccia incasso "EU" Abdeckrossette UP - Brause "EU" Plaque - douche à encastrer "EU" | ZZ 92853 0 | 6-5 | Raccordo conico doccia batteria vasca "AR" Connection for shower "AR" Anschluss "AR" Raccord douche s/gorge "AR" | ZZ 90337 0 | 9-7 | Crociera bocca batteria bordo vasca completa Cross connection for bath mixer Verbindungsstück pass. zu SU/AR/AC 26 Raccord a croix pour bec sur gorge | ZZ 92914 0 |
| 3 | Copricartuccia monocomando incasso Escutcheon cartridge Abdeckkappe Couvere-cartouche | ZZ 92727 0 | 7 | Cappuccio supporto doccia bordo vasca "AR" Escutcheon shower "AR" Abdeckkappe "AR" Rosace douche "AR" | ZZ 92599 0 | 9-8 | Set installazione bocca batteria bordo vasca Installation set for deck-mounted spout Befestigungsset Set installation | ZZ 92975 0 |
| 4 | Calotta bloccaggio cartuccia piccola Nut for mixing valve-small Mutter l/Kartusche Eccou pour cartouche | ZZ 92603 0 | 8 | Supporto doccia batteria bordo vasca "AR" Deck-mounted handshower support "AR" Brausehalter "AR" Support douche "AR" | ZZ 90104 0 | 10 | Guarnizione fibra 3/8" Gasket rubber 3/8" Fiberdichtung 3/8" Joint en fibre 3/8" | ZZ 92696 0 |
| 5 | Cartuccia monocomando piccola Mixing valve - small size Kartusche Cartouche mitigeurs | ZZ 92909 0 | 9 | Bocca batteria vasca "AC" con deviazione Spout bath mixer "AC" with diverter Auslauf-WB- "AC" mit Umstellung Bec bain/douche "AC" avec inverseur | ZZ 92048 0 | 11 | Set install.monoc.bordo vasca Installation set deck-mounted bath mixer Befestigungsset Set installation | ZZ 92412 0 |
| 6 | Doccia per batteria vasca "AR" Handshower for bath mixer "AR" Handbrause-WB- "AR" Douchette "AR" sur gorge | ZZ 90336 0 | 9-1 | Bocca batteria vasca "AC" Spout bath mixer "AC" Auslauf-WB- "AC" Bec bain/douche "AC" | ZZ 90944 0 | 12 | Flessibile 175 cm Ø14 3/8" x M.15x1 Flex 175 cm Ø14 3/8" M.15x1 Brauseschlauch 175 cm Ø14 3/8" x M.15x1 Flex 175 cm Ø14 3/8" x M.15x1 | ZZ 92757 0 |
| 6-1 | Diffusore doccia "AR" Spray-kit handshower "AR" Einsatz l. Brause "AR" Diffusor douchette "AR" | ZZ 90544 0 | 9-2 | Vite bloccaggio bocca batteria vasca Screw for spout Befestigungsschraube Vis x bec sur gorge | ZZ 92648 0 | 13 | Nipples G.1/2" x G.1/2" Nippel G.1/2" x G.1/2" Nipples G.1/2" x G.1/2" | ZZ 92627 0 |
| 6-2 | Vite di fissaggio diffusore per doccia in ottone Fixing screw for spray-kit handshower Befestigungsschraube l. Einsatz l. Br. in Messing Vis fixation diffuseur pour douchette en laiton | ZZ 92640 0 | 9-3 | Pomolo per deviazione bocca batteria vasca Knob for bath spout Zugknopf Umstellung Pommeau x inverseur | ZZ 92649 0 | 14 | Guarnizione fibra 18,5x11x2 Gasket rubber 18,5x11x2 Fiberdichtung 18,5x11x2 Joint en fibre 18,5x11x2 | ZZ 92714 0 |

AY.7

AY001260

<https://en.cisal.it/deck-mounted-3-hole-single-lever-bath-mixer-arcana-royal-ay001260>

2026-04-09