

Bath mixer, full equipment TR_TR000120

MODEL **TR000120**

Bath mixer, full equipment, wall mounted adjustable handshower bracket, Globo D.63 mm ABS one spray handshower, 150 cm Brass Flexible Hose, without handles

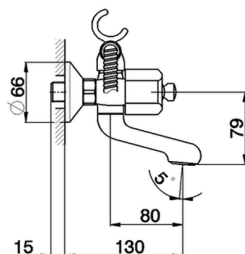
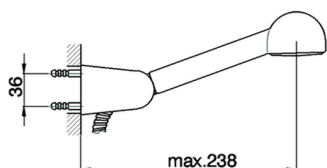


AVAILABLE FINISHINGS



21 21 Chrome

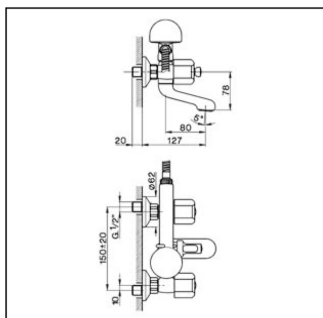
CHARACTERISTICS



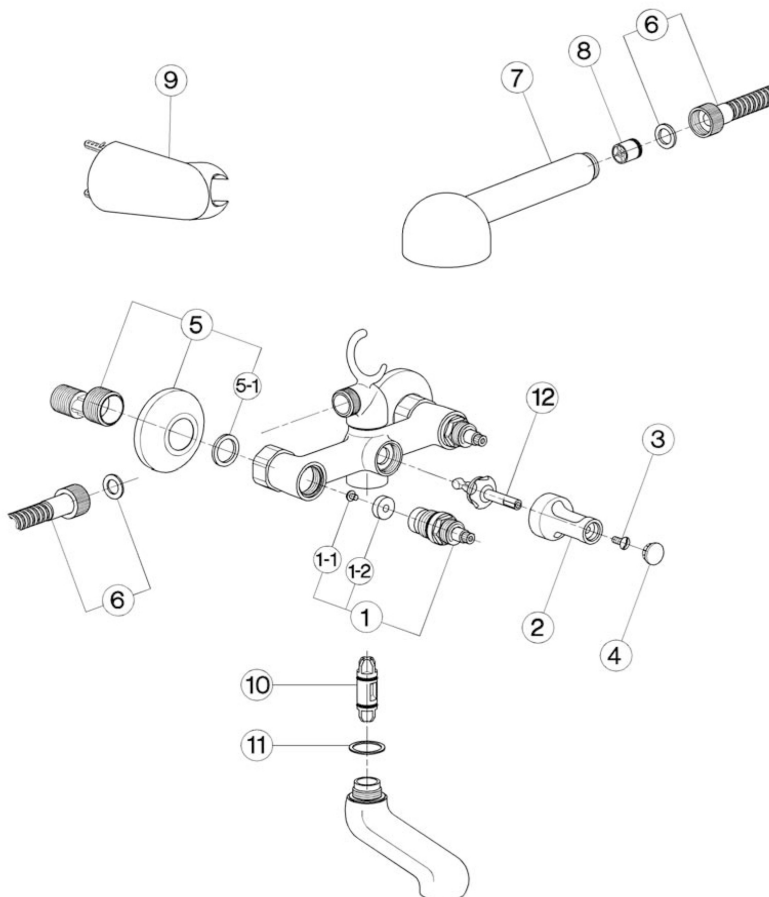
Bath mixer, full equipment TR_TR000120

cisal

TR 00010 (TR 00012 - TR 00013)



- Gruppo vasca
- *Bath mixer*
- Badebatterie
- *Mélangeur bain/douche*



bar	PORTATA BOCCA DI EROGAZIONE * SPOUT FLOW RATE DURCHFLOSS WANNENEINLAUF DEBIT BEC DEVERSEUR l/min.
0.1	18.5
0.2	27
0.3	35
0.4	40
0.5	47
1	/

* con rompigetto
with *antisplash*
mit Strahlregler
avec *brise-jet*

NR.	DESCRIZIONE <i>DESCRIPTION</i> <i>BESCHREIBUNG</i> <i>DESCRIPTION</i>	N. CODICE <i>CODE NO.</i> <i>WERKSNR.</i> <i>NR. CODE</i>	NR.	DESCRIZIONE <i>DESCRIPTION</i> <i>BESCHREIBUNG</i> <i>DESCRIPTION</i>	N. CODICE <i>CODE NO.</i> <i>WERKSNR.</i> <i>NR. CODE</i>	NR.	DESCRIZIONE <i>DESCRIPTION</i> <i>BESCHREIBUNG</i> <i>DESCRIPTION</i>	N. CODICE <i>CODE NO.</i> <i>WERKSNR.</i> <i>NR. CODE</i>
1	Vitone 1/2" "TR" <i>Headvalve 1/2" "TR"</i> Oberteil 1/2" "TR" <i>Tête 1/2" "TR"</i>	ZZ 92869 0	5	Eccentrico con resone <i>Excentric connection with escutcheon</i> S - Anschluss m.Rosette <i>Excentrique + rosace</i>	ZZ 92730 0	10	Valvola deviazione per gruppo vasca "TR" <i>Divertering valve for bath mixer "TR"</i> Umstellungsventil "TR" <i>Tête pour inverseur "TR"</i>	ZZ 92768 0
1-1	Vite M.4x4,5 tb. Ø8 t.cr. <i>Screw M.4x4,5</i> Schraube M.4x4,5 <i>Vis M.4x4,5</i>	ZZ 92625 0	5-1	Guarnizione NBR 90 SH. 24x16x2,7 <i>Gasket NBR 90 SH. 24x16x2,7</i> Dichtung NBR 90 SH. 24x16x2,7 <i>Joint NBR 90 SH. 24x16x2,7</i>	ZZ 92689 0	11	Guarnizione alluminio 26x21,1x1 <i>Gasket aluminium 26x21,1x1</i> Dichtung 26x21,1x1 <i>Joint aluminium 26x21,1x1</i>	ZZ 92686 0
1-2	Guarnizione NBR 90 SH. 16,9x5,5x5 <i>Gasket NBR 90 SH. 16,9x5,5x5</i> Dichtung NBR 90 SH. 16,9x5,5x5 <i>Joint NBR 90 SH. 16,9x5,5x5</i>	ZZ 92699 0	6	Flessibile 150 cm Ø14 1/2"x1/2" <i>Flex 150 cm Ø14 1/2"x1/2"</i> Brauseschlauch 150 cm Ø14 1/2"x1/2" <i>Flex 150 cm Ø14 1/2"x1/2"</i>	ZA 00900 0	12	Parte interna deviatore gruppo vasca "TR" <i>Valve for diverter</i> Umst. 1/TR Badebatt. Innenteil øVorderteil <i>Corp inverseur 8/D "TR"</i>	ZZ 92253 0
2	Deviatore per gruppo vasca "TR" <i>Diverter for bath mixer "TR"</i> Umsteller - WB - "TR" <i>Croisillon inverseur "TR"</i>	ZZ 92685 0	7	Doccia Globo <i>Handshower Globo</i> Handbrause Globo <i>Douchette Globo</i>	DS 01402 0			
3	Vite M.4,5x10 tb. tc. zigrinata <i>Screw M.4,5x10</i> Schraube M.4,5x10 <i>Vis M.4,5x10</i>	ZZ 92609 0	8	Valvola anti-riflutto Ø15 per doccia <i>Back-flow valve Ø15</i> Durchflussverhinderer Ø15 <i>Clapet anti-retour Ø15</i>	ZZ 92956 0			
4	Placchetta a scatto deviatore vasca "TR" <i>Cap for diverter "TR"</i> Abdeckkappe "TR" <i>Plaqueette cache - vis inverseur "TR"</i>	ZZ 92610 0	9	Supporto duplex esterno <i>Hook for handshower</i> Wandhalter <i>Sunond mural</i>	DS 00050 0			

TR000120_{TR.3}

<https://en.cisal.it/bath-mixer-full-equipment-tr-tr000120>

2026-01-10