

## 3 hole washbasin mixer ARCANA CERAMIC\_AC001060

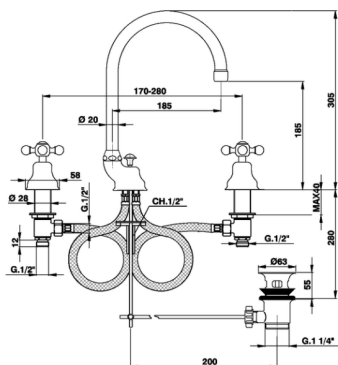
MODEL **AC001060**

3 hole washbasin mixer, with automatic 1"1/4 automatic pop-up waste



### AVAILABLE FINISHINGS

-  **21** 21 Chrome
-  **24** 24 Gold
-  **26** 26 Old Copper
-  **27** 27 Old Bronze
-  **2A** 2A Satin Brushed Nickel
-  **74** 74 Chrome/Gold



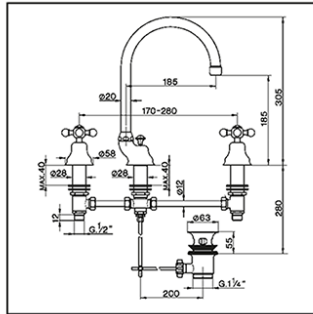
### CHARACTERISTICS



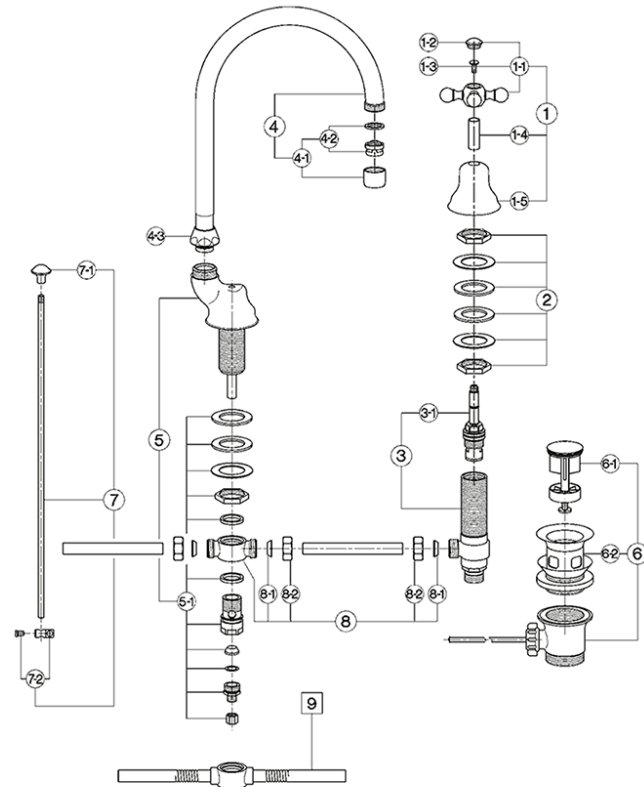
## 3 hole washbasin mixer ARCANA CERAMIC\_AC001060

# cisal

### AC 00106



- Batteria lavabo
- Wash basin mixer
- 3 Loch - Waschtischbatterie
- Mélangeur lavabo



| NR. | DESCRIZIONE<br>DESCRIPTION<br>BESCHREIBUNG<br>DESCRIPTION   | N. CODICE<br>CODE NO.<br>WERKSNR.<br>NR. CODE |
|-----|---|---|
| 1   | Maniglia con cappuccio "AR"<br>Handle with esutchon "AR"<br>Griff + Abdeckkappe "AR"<br>Oscillon - rosace "AR"  | ZZ 90093 0                                    |
| 1-1 | Maniglia "AR" con vite e placchetta<br>Handle with screw and plate "AR"<br>Griff "AR" mit Schraube und Abdeckkappe<br>Oscillon avec vis et plaque "AR"<br>Placchetta a vite maniglia "AR" | ZZ 90307 0                                    |
| 1-2 | Cap for handle "AR"<br>Abdeckkappe "AR" Griff<br>Plaque cache - vis orais "AR"  | ZZ 92617 0                                    |
| 1-3 | Vite M4,5x10 file. zincata<br>Screw M4,5x10<br>Vis M4,5x10  | ZZ 92609 0                                    |
| 1-4 | Tubetto copriasta "AR" H31<br>Tubo "AR" H31<br>Abdeckkappe Ovale "AR" H31<br>Tubo couvre-tête "AR" H31  | ZZ 92620 0                                    |
| 1-5 | Cappuccio a campana "AR"<br>Esutchon "AR"<br>Abdeckkappe "AR"<br>Rosace "AR"<br>Set installazione batteria lavabo<br>Installation set basin mixer<br>Befestigungsset<br>Set installation  | ZZ 92598 0<br>ZZ 92756 0                      |
| 3   | Plattina lavabo "AC" (se montata crociera 8)<br>Tail piece basin mixer "AC" (mounted arm 8)<br>Unterlül-WF "AC" (montiert Kreuzstck 8)<br>Corp lateral "AC" (raccord à croix 8)           | ZZ 92896 0                                    |
| 3   | Plattina lavabo "AC" (se montata crociera 9)<br>Tail piece basin mixer "AC" (mounted arm 9)<br>Unterlül-WF "AC" (montiert Kreuzstck 9)<br>Corp lateral "AC" (raccord à croix 9)           | ZZ 92073 0                                    |

| NR. | DESCRIZIONE<br>DESCRIPTION<br>BESCHREIBUNG<br>DESCRIPTION   | N. CODICE<br>CODE NO.<br>WERKSNR.<br>NR. CODE |
|-----|---|---|
| 3-1 | Vitone ceramico DX per batterie "AC"<br>Ceramic handle valve 1/2" right "AC" long<br>Keramikbortel 1/2" rechts "AC" - lang<br>Tête céramique 1/2" droite "AC" - longue              | ZZ 92859 0                                    |
| 4   | Canna alta Ø20 interasse 185<br>Swinging spout 185 Ø20<br>Auslauf-Röhr-schwenkbar-185 Ø20<br>Bec orientable 185 Ø20   | ZZ 90124 0                                    |
| 4-1 | Aeratore M.22x1 IB<br>Perilator M.22x1 IB<br>Mousseur M.22x1 IB   | ZZ 92841 0                                    |
| 4-2 | Cartuccia per aeratore M. 22x1<br>Mousseur cartouge M.22x1<br>Kart. für Perilator M.22x1<br>Cartouche mousseur M.22x1   | ZZ 92703 0                                    |
| 4-3 | Collotta 3/4" es.29 Ø19,5<br>Nut 3/4" Ø19,5<br>Mutter 3/4" Ø19,5<br>Ecrou 3/4" Ø19,5  | ZZ 92615 0                                    |
| 5   | Corpo lavabo "AR" (se montata crociera 8)<br>Spout tail piece 3-hole mixer "AR" (arm 8)<br>Körper WF - Batterie "AR" - lang (Kreuzstck 8)<br>Corp centr. "AR" (raccord à croix 8)   | ZZ 92373 0                                    |
| 5   | Corpo centrale "AR" (se montata crociera 9)<br>Spout tail piece 3-hole mixer "AR" (arm 9)<br>Körper WF - Batterie "AR" - lang (Kreuzstck 9)<br>Corp centr. "AR" (raccord à croix 9) | ZZ 90135 0                                    |
| 5-1 | Set collegamento crociera batteria lavabo<br>Connection set for basin mixer<br>Verbindungsset<br>Set connection   | ZZ 92783 0                                    |
| 6   | Scarico automatico 1" 1/4 sabbato<br>Pop-up waste 1" 1/4<br>Ablaufgarnitur 1" 1/4<br>Vidage automat. 1" 1/4   | ZZ 92754 0                                    |

| NR. | DESCRIZIONE<br>DESCRIPTION<br>BESCHREIBUNG<br>DESCRIPTION   | N. CODICE<br>CODE NO.<br>WERKSNR.<br>NR. CODE |
|-----|---|---|
| 6-1 | Tappo completo scarico automatico 1" 1/4<br>Krobo for pop-up rod 1" 1/4<br>Stopfen für Ablauf. lpl 1" 1/4<br>Bande - vidage 1" 1/4                            | ZZ 92925 0                                    |
| 6-2 | Pialetta per scarico automatico 1" 1/4<br>Waste for bath drain 1" 1/4<br>Ablauf fl. Ablaufgarnitur 1" 1/4<br>Oscilpe pour vidage 1" 1/4                       | ZZ 92924 0                                    |
| 7   | Rd Ø6<br>Zugstange Ø6<br>Tige Ø6  | ZZ 92760 0                                    |
| 7-1 | Pomello per scarico automatico "AR"<br>Krobo für pop-up rod "AR"<br>Zugknopf für Ablaufgarn. "AR"<br>Rennsau - lige "AR"                                      | ZZ 92624 0                                    |
| 7-2 | Morsetto annesso scarico automatico Ø6,2<br>Connection for pop-up rod Ø6,2<br>Gelenkstueck für Zugstange Ø6,2<br>Jonction x tige vidage Ø6,2                  | ZZ 92622 0                                    |
| 8   | Crociera per batteria lavabo<br>Cross connection for basin mixer<br>Verbindung f/WF-Batterie<br>Raccord a croix lavabo  | ZZ 92893 0                                    |
| 8-1 | Guarnizione conica NBR90 SH 18x11x7,5<br>Gasket NBR90 SH 18x11x7,5<br>Dichtung NBR90 SH 18x11x7,5<br>Joint conique NBR90 SH 18x11x7,5                         | ZZ 92729 0                                    |
| 8-2 | Calotta 1/2" H 10 Ø12,5<br>Nut 1/2" H 10 Ø12,5<br>Mutter 1/2" H 10 Ø12,5<br>Ecrou 1/2" H 10 Ø12,5   | ZZ 92628 0                                    |
| 9   | Crociera per batteria lavabo (tipo vecchio)<br>Cross connection for basin mixer (old type)<br>Verbindung f/WF-Batterie<br>Raccord a croix lavabo (vieux mod.) | ZZ 92996 0                                    |

AC001060

<https://en.cisal.it/3-hole-washbasin-mixer-arcana-ceramic-ac001060>

2026-06-14