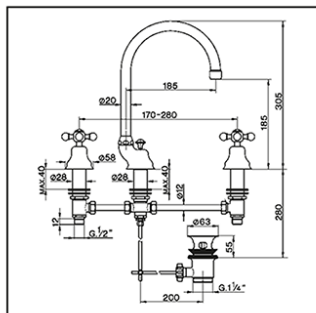


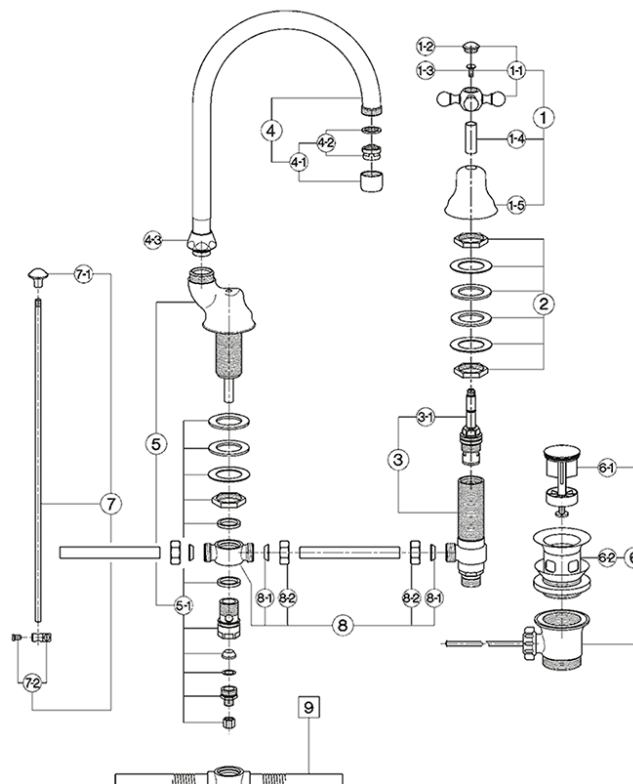
3 hole washbasin mixer ARCANA CERAMIC_AC001060

cisal

AC 00106



- Batteria lavabo
- Wash basin mixer
- 3 Loch - Waschtischbatterie
- Mélangeur lavabo



| NR. | DESCRIZIONE DESCRIPTION BESCHREIBUNG DESCRIPTION | N. CODICE CODE NO. WERKSNR. NR. CODE | NR. | DESCRIZIONE DESCRIPTION BESCHREIBUNG DESCRIPTION | N. CODICE CODE NO. WERKSNR. NR. CODE | NR. | DESCRIZIONE DESCRIPTION BESCHREIBUNG DESCRIPTION | N. CODICE CODE NO. WERKSNR. NR. CODE |
|-----|--|---|-----|---|---|-----|---|---|
| 1 | Mangiaia con cappuccio "AR" Handle with esutchon "AR" Griff + Abdeckkappe "AR" Oscillon - rosace "AR" | ZZ 90093 0 | 3-1 | Vitone ceramico DX per batterie "AC" Ceramic handle 1/2" right "AC"-lang Keramikbortel 1/2"-rechts "AC"-lang Tête céramique 1/2" droite "AC" - longue | ZZ 92859 0 | 6-1 | Tappo completo scarico automatico 1" 1/4 Krobo for pop-up rod 1" 1/4 Stopfen f/Abaufg. 1" 1/4 Bonde - vidage 1" 1/4 | ZZ 92925 0 |
| 1-1 | Mangiaia "AR" con vite e placchetta Handle with screw and plate "AR" Griff "AR" mit Schraube und Abdeckkappe Oscillon avec vis et plaque "AR" | ZZ 90307 0 | 4 | Canna alta Ø20 interasse 185 Swinging spout 185 Ø20 Auslauf-Röhr-schwenkbar-185 Ø20 Boc orientable 185 Ø20 | ZZ 90124 0 | 6-2 | Piletta per scarico automatico 1" 1/4 Waste for bath drain 1" 1/4 Abauf f/Abaufgarnitür 1" 1/4 Osepine pour vidage 1" 1/4 | ZZ 92924 0 |
| 1-2 | Placchetta a vite mangiaia "AR" Cap for handle "AR" Abdeckkappe "AR" Griff Plaque cache- vis orais "AR" | ZZ 92617 0 | 4-1 | Aratore M.22x1 1/8 Perilator M.22x1 1/8 Mousseur M.22x1 1/8 | ZZ 92841 0 | 7 | Rodi Ø6 Zugstange Ø6 Tige Ø6 | ZZ 92760 0 |
| 1-3 | Vite M4,5x10 file. zincata Screw M4,5x10 Schraube M4,5x10 Vis M4,5x10 | ZZ 92609 0 | 4-2 | Cartuccia per aratore M. 22x1 Mousseur cartouge M.22x1 Kart. f/Perilator M.22x1 Cartouche mousseur M.22x1 | ZZ 92703 0 | 7-1 | Pomello per scarico automatico "AR" Krobo for pop-up rod "AR" Zugknopf f/Abaufgarn. "AR" Rennsau - lige "AR" | ZZ 92624 0 |
| 1-4 | Tubetto copriasta "AR" H31 Tubo "AR" H31 Abdeckkappe Ostteil "AR" H31 Tubo couvre-tête "AR" H31 | ZZ 92620 0 | 4-3 | Colotta 3/4" es.29 Ø19,5 Nut 3/4" Ø19,5 Mutter 3/4" Ø19,5 Ecrou 3/4" Ø19,5 | ZZ 92615 0 | 7-2 | Morsello astina scarico automatico Ø6,2 Connection for pop-up rod Ø6,2 Gelenkstück f/Zugstange Ø6,2 Jonction x tige vidage Ø6,2 | ZZ 92622 0 |
| 1-5 | Cappuccio a campana "AR" Esutchon "AR" Abdeckkappe "AR" Poceco "AR" | ZZ 92598 0 | 5 | Corpo lavabo "AR" (se montata crociera 8) Spout tail piece 3-hole mixer "AR" (corn 8) Körper WT - Batterie "AR" - lang (Kreuzstück 8) Corp centr. "AR" (raccord à croix 8) | ZZ 92373 0 | 8 | Crociera per batteria lavabo Cross connection for basin mixer Verbindung f/WT-Batterie Raccord a croix lavabo | ZZ 92893 0 |
| 2 | Set installazione batteria lavabo Installation set basin mixer Befestigungsset Set installation | ZZ 92756 0 | 5 | Corpo centrale "AR" (se montata crociera 9) Spout tail piece 3-hole mixer "AR" (corn 9) Körper WT - Batterie "AR" - lang (Kreuzstück 9) Corp centr. "AR" (raccord à croix 9) | ZZ 90135 0 | 8-1 | Guarnizione conica NBR90 SH 18x11x7,5 Gasket NBR90 SH 18x11x7,5 Dichtung NBR90 SH 18x11x7,5 Joint conique NBR90 SH 18x11x7,5 | ZZ 92729 0 |
| 3 | Plattina lavabo "AC" (se montata crociera 8) Tail piece basin mixer "AC" (mounted corn 8) Unterteil-WF "AC" (montiert Kreuzstück 8) Corp lateral "AC" (raccord à croix 8) | ZZ 92896 0 | 5-1 | Set collegamento crociera batteria lavabo Connection set for basin mixer Verbindungsset Set connection | ZZ 92783 0 | 8-2 | Calotta 1/2" H 10 Ø12,5 Nut 1/2" H 10 Ø12,5 Mutter 1/2" H 10 Ø12,5 Ecrou 1/2" H 10 Ø12,5 | ZZ 92628 0 |
| 3 | Plattina lavabo "AC" (se montata crociera 9) Tail piece basin mixer "AC" (mounted corn 9) Unterteil-WF "AC" (montiert Kreuzstück 9) Corp lateral "AC" (raccord à croix 9) | ZZ 92073 0 | 6 | Scarico automatico 1" 1/4 sabbato Pop-up waste 1" 1/4 Abaufgarnitür 1" 1/4 Vidage automat. 1" 1/4 | ZZ 92754 0 | 9 | Crociera per batteria lavabo (tipo vecchio) Cross connection for basin mixer (old type) Verbindung f/WT-Batterie Raccord à croix lavabo (vieux mod.) | ZZ 92996 0 |

AC001060

<https://en.cisal.it/3-hole-washbasin-mixer-arcana-ceramic-ac001060>

2026-04-29