

## Exposed part for con.thermo.shower valve, 3-outlet NUANCE X32\_X1018200

MODEL **X1018200**

Exposed part for con.thermo.shower valve,  
3-outlet, with 3 outlet deviasstop, without concealed  
part, for item ZA018201, Inox AISI 316L

### AVAILABLE FINISHINGS



**D1** D1 Brushed Inox



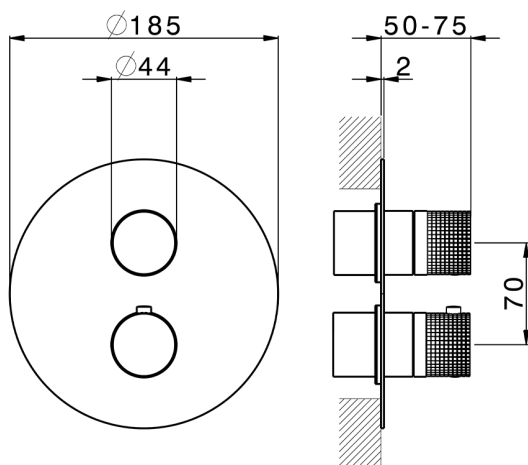
**5H** 5H Dark Brass Brushed



**5L** 5L Brushed Black Titanium



**5N** 5N Brushed Rose Gold



### CHARACTERISTICS

Installation **Concealed**

Required concealed parts **ZA018201**

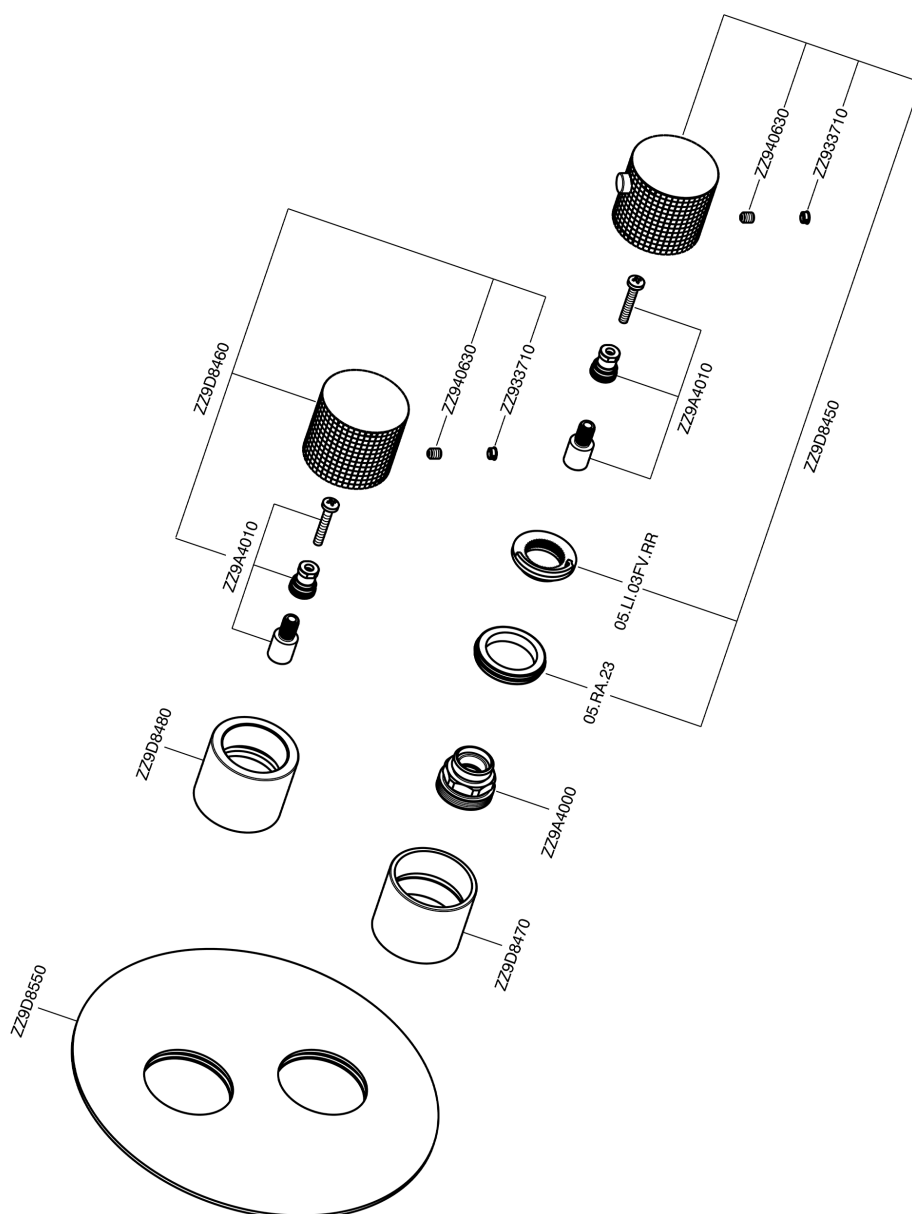


### Thermostatic

The Cisal thermostatic is your  
personal water manager, helping you  
to handle, control and save water and  
energy.



## Exposed part for con.thermo.shower valve, 3-outlet NUANCE X32\_X1018200



X1018200

<https://en.cisal.it/exposed-part-for-con-thermo-shower-valve-3-outlet-nuance-x32-x1018200>

## Concealed thermostatic shower valve, 3-outlets CONCEALED\_ZA018201

MODEL **ZA018201**

Concealed thermostatic shower valve, 3-outlets, with 1/2" 3 outlet devistop cartridge, without trim kit



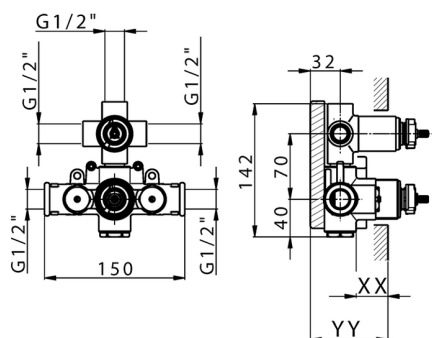
### AVAILABLE FINISHINGS



**04** 04 Without finishing

### CHARACTERISTICS

Concealed **1**  
 Cartridge Spare Parts **24.04A.PP**  
**8x20 Plus P Thermostatic Valve**



Piastra/Plate/Plaque/Platte/Placa

2-3mm: XX 25-40 YY 76-91

10 mm: XX 16-31 YY 65-80



### DeviaStop

The Cisal Devia Stop technology allows to adjust the water flow and to direct it to the selected output point (overhead soaker, hand shower, etc).



### Thermostatic

The Cisal thermostatic is your personal water manager, helping you to handle, control and save water and energy.



2026-02-03