

## Exposed part for Single Lever One Box Valve ONE BOX\_LV0BM010

MODEL

**LV0BM010**

Exposed part for Single Lever One Box Valve, 1  
Outlet, Minimum depth of installation: 67 mm, without  
concealed part, for items ZA00B030-ZA00B031

### AVAILABLE FINISHINGS


**21** 21 Chrome

**2B** 2B Polished Nickel

**2F** 2F Brushed Nickel

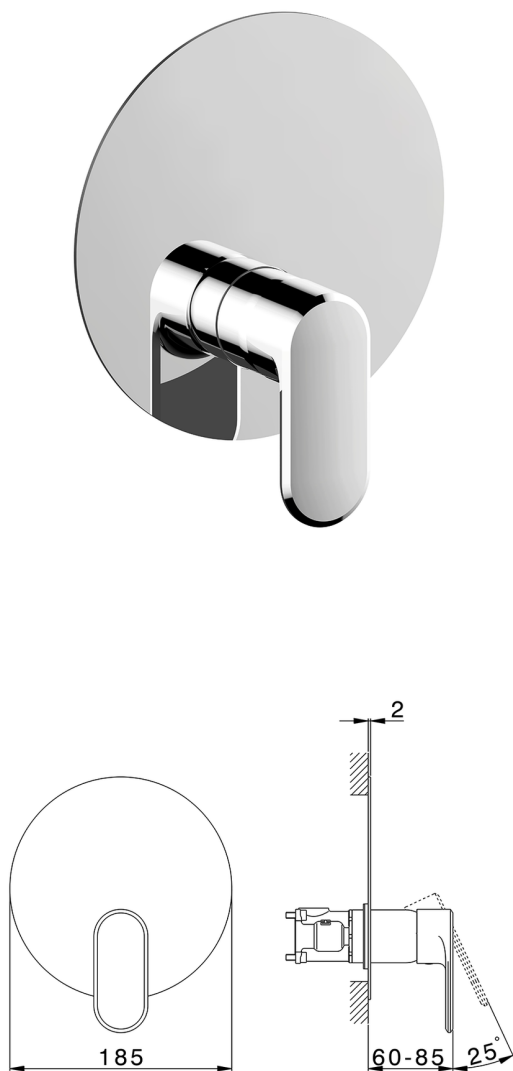
**40** 40 Matt Black

**4Q** 4Q Matt White

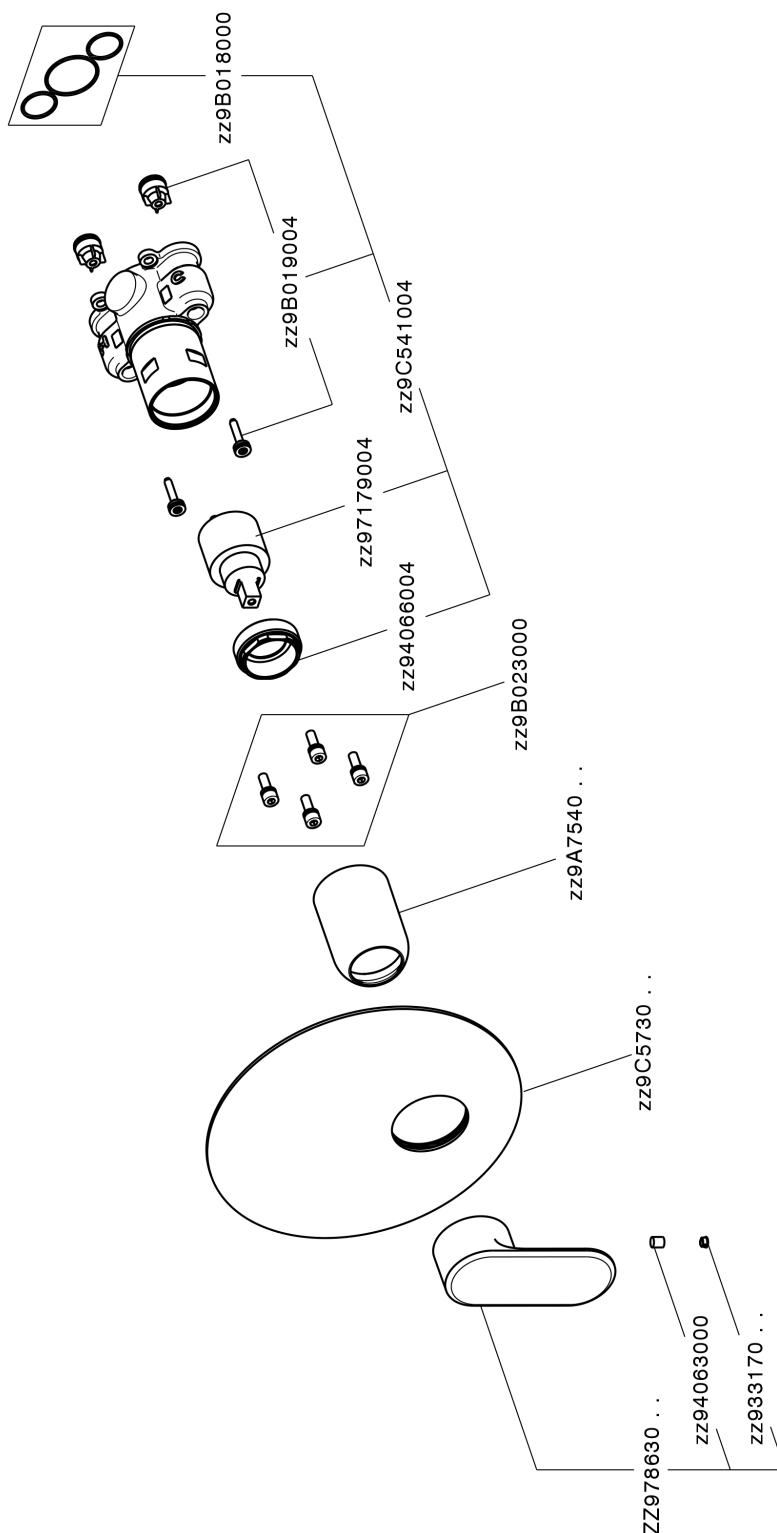
### CHARACTERISTICS

Cartridge Spare Parts **ZZ97179000**
**35 mm Cartridge**

Installation **Concealed**

Required concealed parts **ZA00B031**
**ZA00B030**


## Exposed part for Single Lever One Box Valve ONE BOX\_LV0BM010



LV0BM010

<https://en.cisal.it/exposed-part-for-single-lever-one-box-valve-one-boxlv0bm010>

## One Box Universal Concealed Part ONE BOX\_ZA00B031

MODEL **ZA00B031**

One Box Universal Concealed Part, for 1, 2 or 3 outlet thermostatic or single lever, without trim kit, with noise reducers, with sealing gasket

AVAILABLE FINISHINGS



**04** 04 Without finishing

CHARACTERISTICS

Concealed **1**



### Thermostatic

The Cisal thermostatic is your personal water manager, helping you to handle, control and save water and energy.



## One Box Universal Concealed Part ONE BOX\_ZA00B030

MODEL **ZA00B030**

One Box Universal Concealed Part, for 1, 2 or 3 outlet thermostatic or single lever, without trim kit, without noise reducers, with sealing gasket

AVAILABLE FINISHINGS



**04** 04 Without finishing

CHARACTERISTICS

Concealed **1**



### Thermostatic

The Cisal thermostatic is your personal water manager, helping you to handle, control and save water and energy.



2024-05-09