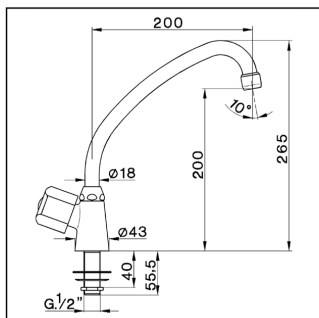


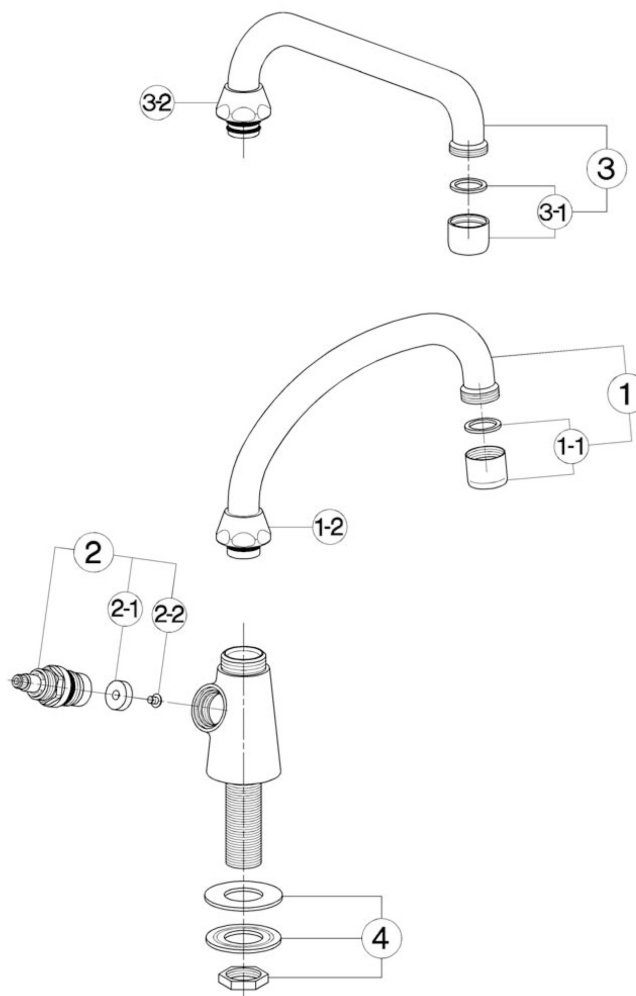
Pillar tap TR_TR000740

cisal

TR 00074 (TR 00075)



- Rubinetto a colonna
- *Deck-mounted single tap*
- Standschwenkventil
- *Robinet de comptoir*



bar	PORTATA BOCCA DI EROGAZIONE * SPOUT FLOW RATE DURCHFLOSS WANNENEINLAUF DÉBIT BEC DEVERSEUR l/min.
0.1	10
0.2	14.5
0.3	18.5
0.4	21.5
0.5	24.5
1	34.5

* con rompigetto
with antisplash
mit Strahlregler
avec brise-jet

NR.	DESCRIZIONE DESCRIPTION BESCHREIBUNG DESCRIPTION	N. CODICE CODE NO. WERKSNR. NR. CODE
1	Canna alta Ø18 interasse 200 Swinging spout 200 Ø18 Auslauf-Rohr-U-200 Ø18 Bec orientale 200 Ø18	ZZ 92739 0
1-1	Rompigetto M.22x1 Antisplash M.22x1 Strahlregler M.22x1 Brise-jet M.22x1	ZZ 92771 0
1-2	Calotta 3/4" es 29 Ø19,5 Nut 3/4" Ø19,5 Mutter 3/4" Ø19,5 Ecrou 3/4" Ø19,5	ZZ 92615 0
2	Vitone 1/2" "TR" Headvalve 1/2" "TR" Oberleiti 1/2" "TR" Tête 1/2" "TR"	ZZ 92869 0
2-1	Guarnizione NBR 90 SH. 16,9x5,5x5 Gasket NBR 90 SH. 16,9x5,5x5 Dichtung NBR 90 SH. 16,9x5,5x5 Joint NBR 90 SH. 16,9x5,5x5	ZZ 92699 0
2-2	Vite M 4x4,5 lb. Ø8 l.c.r. Screw M 4x4,5 Schraube M 4x4,5 Vis M 4x4,5	ZZ 92625 0

NR.	DESCRIZIONE DESCRIPTION BESCHREIBUNG DESCRIPTION	N. CODICE CODE NO. WERKSNR. NR. CODE
3	Canna a U Ø18 interasse 185 <i>Swinging spout 185 Ø18</i> <i>Auslauf-Rohr-U-185 Ø18</i> <i>Bec orientable 185 Ø18</i>	ZZ 92736 0
3-1	Rompigetto M.22x1 <i>Antisplash M.22x1</i> <i>Strahlregler M.22x1</i> <i>Brise-jet M.22x1</i>	ZZ 92771 0
3-2	Calotta 3/4" es.29 Ø19,5 <i>Nut 3/4" Ø19,5</i> <i>Mutter 3/4" Ø19,5</i> <i>Ecrou 3/4" Ø19,5</i>	ZZ 92615 0
4	Set installazione rubinetto a colonna <i>Installation set deck-mounted tap</i> <i>Befestigungsset</i> <i>Set installation</i>	ZZ 92740 0

[illegible]

TR000740

<https://en.cisal.it/pillar-tap-trtr000740>

2024-05-07