

Exposed part for Single Lever One Box Valve NUANCE X32_X10BM010

MODEL **X10BM010**

Exposed part for Single Lever One Box Valve, 1
Outlet, Minimum depth of installation: 67 mm, without
concealed part - Inox AISI 316L, for items
ZA00B030-ZA00B031

AVAILABLE FINISHINGS



5H 5H Dark Brass Brushed



5L 5L Brushed Black Titanium



5N 5N Brushed Rose Gold



D1 D1 Brushed Inox

CHARACTERISTICS

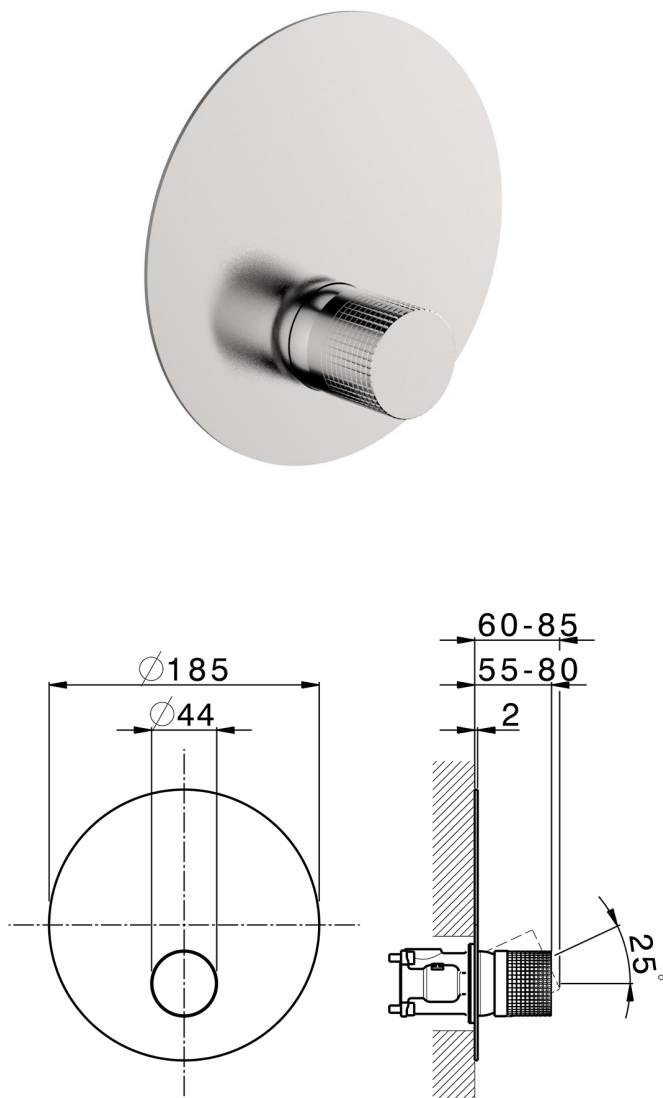
Cartridge Spare Parts **ZZ97179000**

35 mm Cartridge

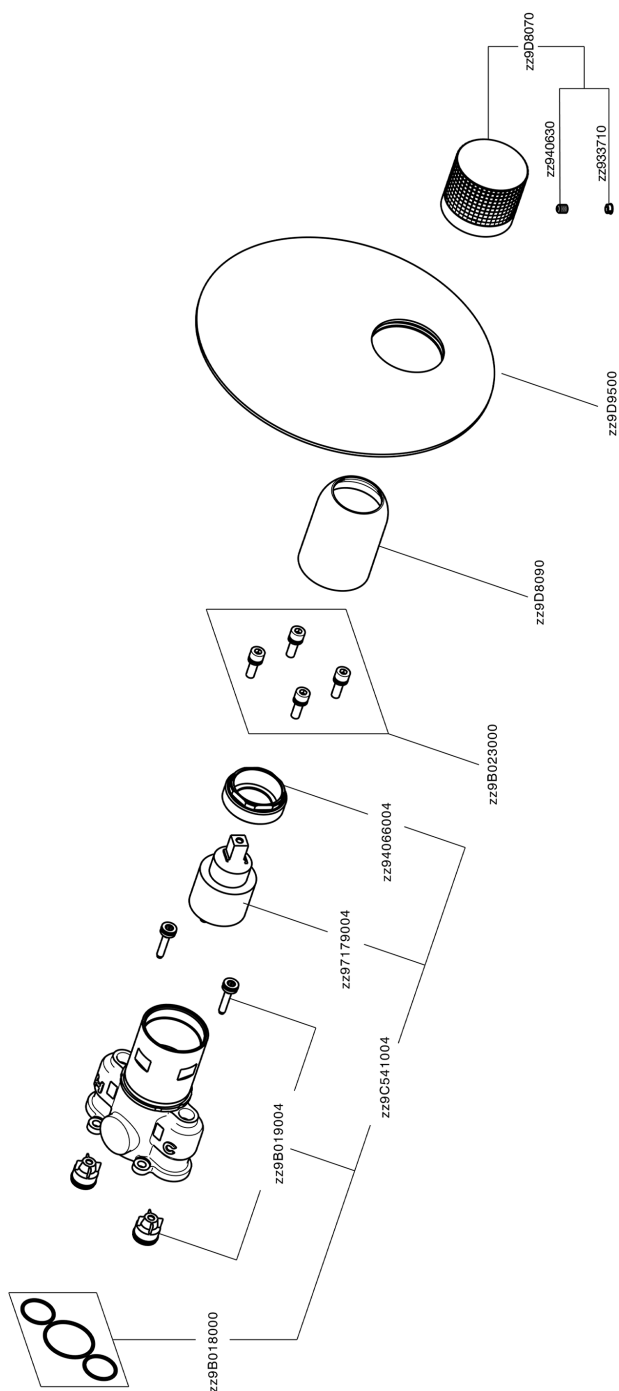
Installation **Concealed**

Required concealed parts **ZA00B031**

ZA00B030



Exposed part for Single Lever One Box Valve NUANCE X32_X10BM010



X10BM010

<https://en.cisal.it/exposed-part-for-single-lever-one-box-valve-nuance-x32-x10bm010>

One Box Universal Concealed Part ONE BOX_ZA00B031

MODEL **ZA00B031**

One Box Universal Concealed Part, for 1, 2 or 3 outlet thermostatic or single lever, without trim kit, with noise reducers, with sealing gasket

AVAILABLE FINISHINGS



04 04 Without finishing

CHARACTERISTICS

Concealed **1**



Thermostatic

The Cisal thermostatic is your personal water manager, helping you to handle, control and save water and energy.



One Box Universal Concealed Part ONE BOX_ZA00B030



MODEL **ZA00B030**

One Box Universal Concealed Part, for 1, 2 or 3 outlet thermostatic or single lever, without trim kit, without noise reducers, with sealing gasket

AVAILABLE FINISHINGS



04 04 Without finishing

CHARACTERISTICS

Concealed **1**



Thermostatic

The Cisal thermostatic is your personal water manager, helping you to handle, control and save water and energy.



2025-12-14