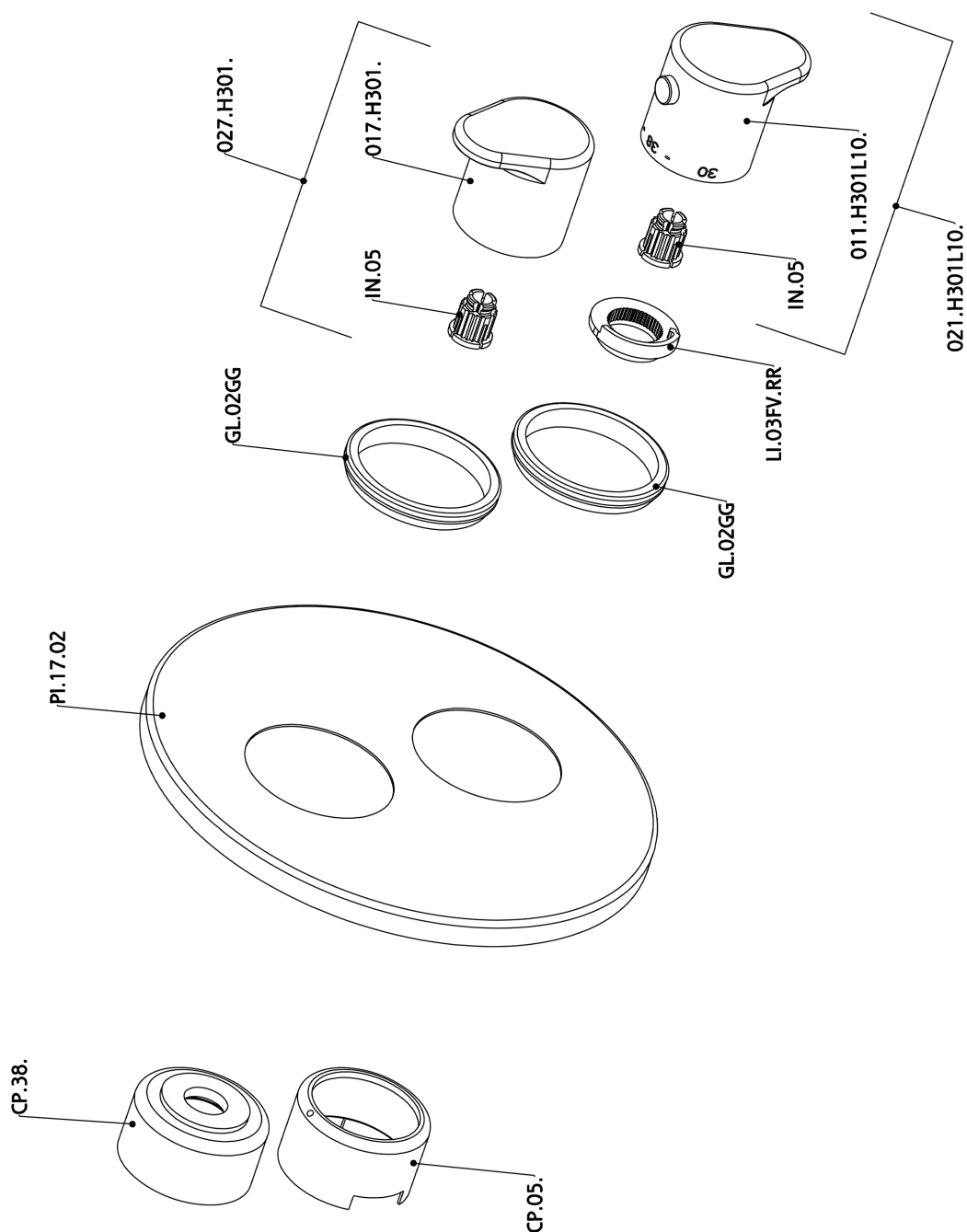


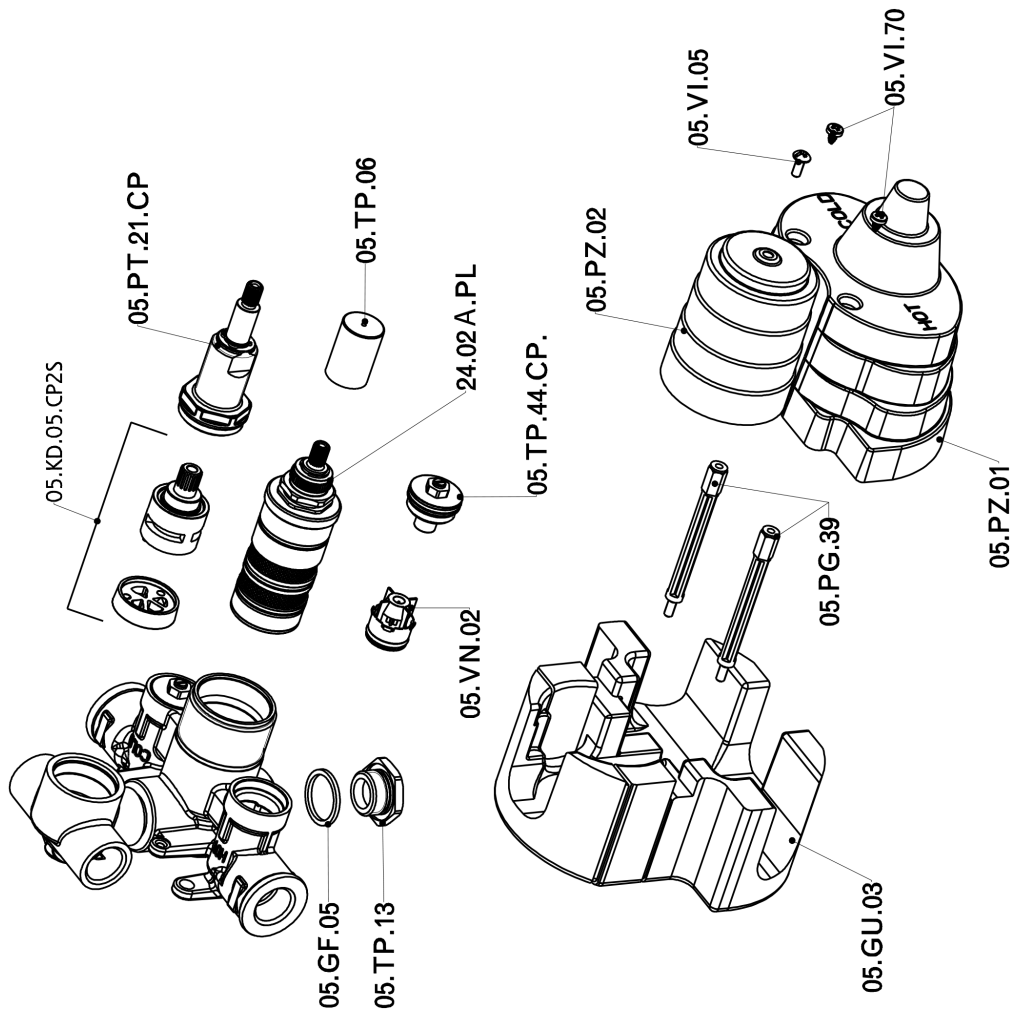
Exposed part for con.thermo.shower valve, 2-outlet ALMA_A3018100



A3018100

<https://en.cisal.it/exposed-part-for-con-thermo-shower-valve-2-outlet-alma-a3018100>

Concealed thermostatic shower valve, 2-outlets CONCEALED_ZA018101



ZA018101

<https://en.cisal.it/concealed-thermostatic-shower-valve-2-outlets-concealed-za018101>

2026-04-09