

Exposed single lever sink mixer KITCHEN_CL000401



MODEL **CL000401**

Exposed single lever sink mixer, swivel spout

AVAILABLE FINISHINGS

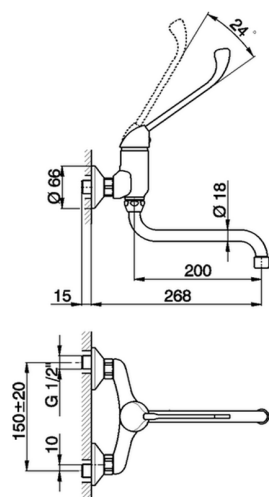


21 21 Chrome

CHARACTERISTICS

Cartridge Spare Parts **ZZ94034000**

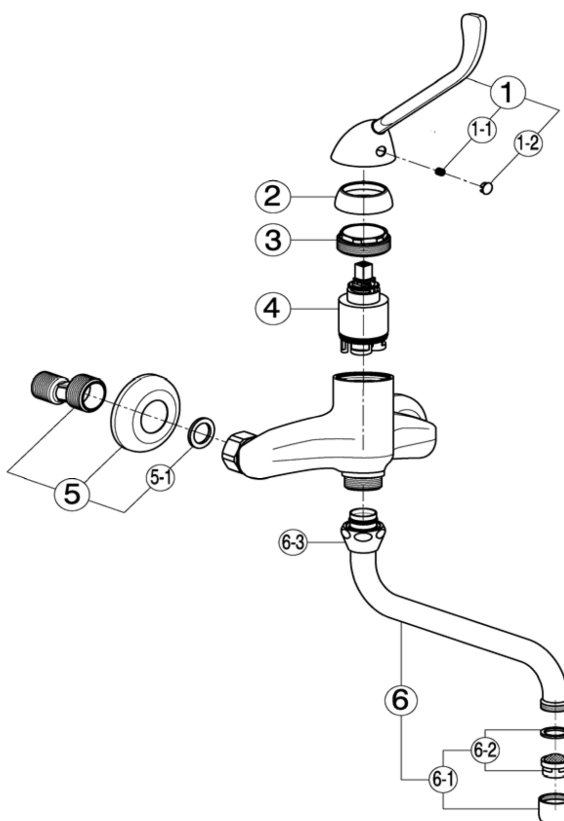
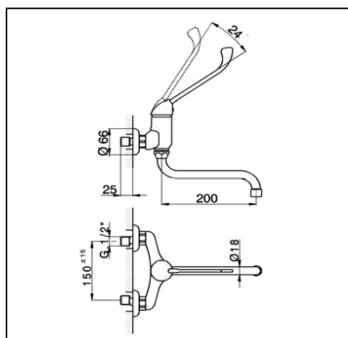
35 mm Cartridge



Exposed single lever sink mixer KITCHEN_CL000401

cisal

CL 00040



| NR. | DESCRIZIONE DESCRIPTION BESCREIBUNG | N.CODE CODE NO. WERSKNR. NR.CODE |
|-----|---|---|
| | Leva monocomando "CL" | |
| 1 | Lever "CL" Hebel "CL" Levier "CL" | ZA005020 |
| | Grano punta coppa inox M.5x6 | |
| 1-1 | Screw-stainless steel M.5x6 Madenschraube M.5x6 Vis speciale inox M.5x6 | ZZ940630 |
| | Piacchetta per leva | |
| 1-2 | Cap for lever Abdeckkappe f/Hebel Plaquette levier | ZZ927100 |
| | Copricartuccia senza ideogrammi | |
| 2 | Escutcheon cartridge without ideogram Abdeckkappe ohne Ideogramm Couvre-cartouche sans ideogramme | ZZ940650 |
| | Calotta bloccaggio cartuccia | |
| 3 | Nut for mixing valve Mutter f/kartusche Ecrou pour cartouche | ZZ940660 |
| | Cartuccia monocomando | |
| 4 | Mixing valve Kartusche Cartouche mitigeurs | ZZ940340 |

| NR. | DESCRIZIONE DESCRIPTION BESCREIBUNG DESCRIPTION | N.CODE CODE NO. WERSKNR. NR.CODE |
|-----|--|---|
| | Eccentrico con rosone | |
| 5 | Excentric connection with escutcheon S - Anschluss m.Rosette Excentrique + rosace | ZZ927300 |
| 5-1 | Guarnizione NBR 90 SH. 24x16x2,7 Gasket NBR 90 SH. 24x16x2,7 Dichtung NBR 90 SH. 24x16x2,7 Joint NBR 90 SH. 24x16x2,7 | ZZ926890 |
| 6 | Canna a S Ø18 interasse 200 Swinging spout 200 Ø18 Auslauf-Rohr-S-200 Ø18 Bec orientable 200 Ø18 | ZZ928220 |
| 6-1 | Aeratore M.22x1 IA Mousseur M.22x1 IA Perlator M.22x1 IA Mousseur M.22x1 IA | ZZ928350 |
| 6-2 | Cartuccia per aeratore M. 22x1 Mousseur cartridge M.22x1 Kart.f/Perlator M.22x1 Cartouche x mousseur M.22x1 | ZZ927080 |
| 6-3 | Calotta 3/4" es.29 Ø19,5 Nut 3/4" Ø19,5 Mutter 3/4" Ø19,5 Ecrou 3/4" Ø19,5 | ZZ926150 |

[illegible]

CL000401

<https://en.cisal.it/exposed-single-lever-sink-mixer-kitchen-cl000401>

2026-02-04