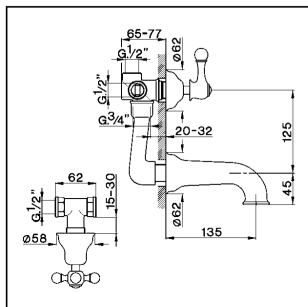


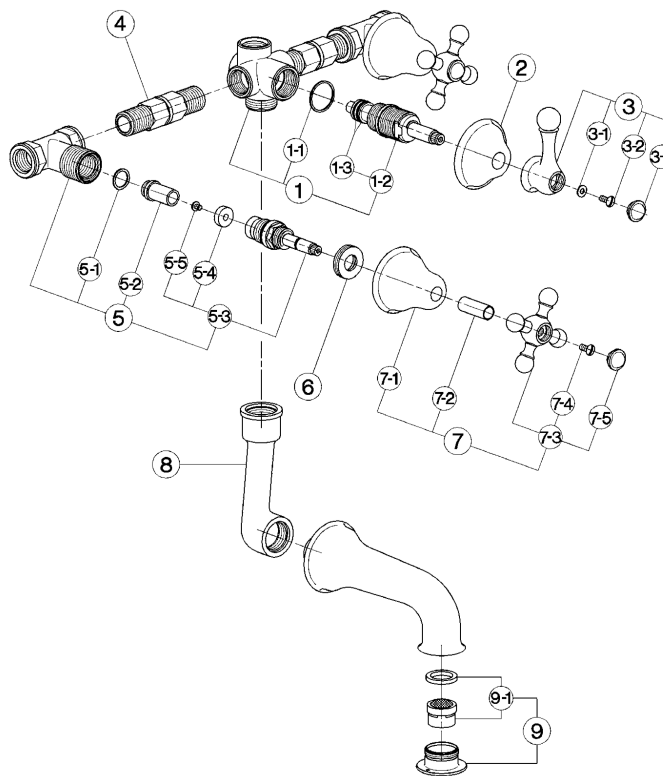
Concealed 2-outlets diverter ARCANA

cisal

AR 00021 (AR 00020 - AR 00024 - AR 00030)



- Gruppo vasca-doccia incasso
- Concealed bath-shower mixer
- UP-Wannenfüll-u- Brausebatterie
- Mélangeur bain/douche à encastrer



| bar | PORTATA BOCCA DI EROGAZIONE * SPOUT FLOW RATE DURCHFLOSS WANNENEINLAUF DEBIT BEC DEVERSEUR l/min. |
|-----|---------------------------------------------------------------------------------------------------------------|
| 0.5 | 10.5 |
| 1 | 14 |
| 2 | 20 |
| 3 | 24 |
| 4 | 28 |
| 5 | 31.5 |

* con resistenza silenziosa della classe di portata C (30 l/min. a 3 bar)
with hydraulic resistance of flow rate class C (30 l/min. at 3 bar)
mit geräuscharmen Widerstand der Durchflussklasse C (30 l/min. bei 3 bar)
avec aérateur classe C (30 l/min. à 3 bar)

| NR. | DESCRIZIONE DESCRIPTION BESCHREIBUNG DESCRIPTION | N. CODICE CODE NO. WERKSNR. NR. CODE | NR. | DESCRIZIONE DESCRIPTION BESCHREIBUNG DESCRIPTION | N. CODICE CODE NO. WERKSNR. NR. CODE | NR. | DESCRIZIONE DESCRIPTION BESCHREIBUNG DESCRIPTION | N. CODICE CODE NO. WERKSNR. NR. CODE |
|-----|-----------------------------------------------------------------------------------------------------------------------------------|-----------------------------------------------|-----|-----------------------------------------------------------------------------------------------------------------------------------------|-----------------------------------------------|-----|------------------------------------------------------------------------------------------------------------------------------------------|-----------------------------------------------|
| 1 | Gruppo deviazione incasso "AR" Diverter concealed "AR" UP Körper "AR" Inverseur - B/D "AR" | ZZ 90085 0 | 4 | Raccordo universale per gruppo incasso Connection for concealed mixer Stand-Anschluss Raccord universel | ZZ 92600 0 | 7-1 | Cappuccio a campana "AR" Escutcheon "AR" Abdeckkappe "AR" Rosace "AR" | ZZ 92598 0 |
| 1-1 | Guarnizione fibra 27x24x1 Gasket rubber 27x24x1 Fiberdichtung 27x24x1 Joint en fibre rouge 27x24x1 | ZZ 92687 0 | 5 | Rubinetto incasso 1/2" "AR" Concealed stop cock 1/2" "AR" Unterputventil 1/2" "AR" Robinet à encastrer 1/2" "AR" | ZZ 92755 0 | 7-2 | Tubetto copriasta "AR" H.31 Tube "AR" H.31 Abdeckkappe Oberteil "AR" H.31 Tubé couvre-tête "AR" H.31 | ZZ 92620 0 |
| 1-2 | Vitone per deviazione incasso "AR" Diverter valve for concealed "AR" mixer Umstelloberteil "AR" Tête pour inverseur "AR" | ZZ 92781 0 | 5-1 | Guarnizione alluminio cotto 18x14,2x1 Gasket aluminium 18x14,2x1 Dichtung 18x14,2x1 Joint aluminium 18x14,2x1 | ZZ 92667 0 | 7-3 | Maniglia "AR" con vite e placchetta Griff "AR" mit Schraube und Abdeckkappe Croisillon avec vis et plaque "AR" | ZZ 90307 0 |
| 1-3 | O.R. 11 NBR 75 SH. O.R. 11 NBR 75 SH. O.R. 11 NBR 75 SH. O.R. 11 NBR 75 SH. | ZZ 92690 0 | 5-2 | Sede per rubinetto incasso Seat for concealed stop cock Sitz I/UP - Ventil Siège robinet encastrer | ZZ 92611 0 | 7-4 | Vite M.4,5x10 tb. tc. zigrinata Screw M.4,5x10 Schraube M.4,5x10 Vis M.4,5x10 | ZZ 92609 0 |
| 2 | Rosone centrale incasso "AR" Escutcheon concealed diverter "AR" Rosette "AR" Rosace - Inverseur "AR" | ZZ 92597 0 | 5-3 | Vitone 1/2" "AR" lungo per batterie Headvalve 1/2" "AR" - long Oberteil 1/2" "AR" - lang Tête 1/2" "AR" - longue | ZZ 92871 0 | 7-5 | Placchetta a vite maniglia "AR" Cap for handle "AR" Abdeckkappe "AR" Griff Plaque cache - vis crois. "AR" | ZZ 92617 0 |
| 3 | Deviatore centrale incasso "AR" Diverter concealed "AR" Griff fuer UP - umst. "AR" Croisillon inverseur "AR" | ZZ 90087 0 | 5-4 | Guarnizione NBR 90 SH. 16,9x5,5x5 Gasket NBR 90 SH. 16,9x5,5x5 Dichtung NBR 90 SH. 16,9x5,5x5 Joint NBR 90 SH. 16,9x5,5x5 | ZZ 92699 0 | 8 | Raccordo collegamento a pipa per incasso UP - Verbindungsset Raccord x mèl. B/D à encastrer | ZZ 92592 0 |
| 3-1 | Rondella ottone 10x4,5x0,8 Ring in brass 10x4,5x0,8 Unterlegscheibe 10x4,5x0,8 Joint latton 10x4,5x0,8 | ZZ 92663 0 | 5-5 | Vite M.4x4,5 tb. 08 l.c. Screw M.4x4,5 Schraube M.4x4,5 Vis M.4x4,5 | ZZ 92625 0 | 9 | Bordino con aeratore M. 28x1 "AR" Overfill with mousseur M.28x1 "AR" Perforator M.28x1 "AR" Garniture avec mousseur M.28x1 "AR" | ZZ 92784 0 |
| 3-2 | Vite M.4,5x10 tb. tc. zigrinata Screw M.4,5x10 Schraube M.4,5x10 Vis M.4,5x10 | ZZ 92609 0 | 6 | Ghiera per rubinetto incasso "AR" Nut for concealed stop cock "AR" Liebengangsstück - UP - "AR" Ecrou robinet à encastrer "AR" | ZZ 92613 0 | 9-1 | Cartuccia per aeratore M. 28x1 Mousseur cartridge M.28x1 Kart. f/Perforator M.28x1 Cartouche x mousseur M.28x1 | ZZ 92694 0 |
| 3-3 | Placchetta a vite maniglia "AR" Cap for handle "AR" Abdeckkappe "AR" Griff Plaque cache - vis crois. "AR" | ZZ 92617 0 | 7 | Maniglia con cappuccio "AR" Handle with escutcheon "AR" Griff + Abdeckkappe "AR" Croisillon + rosace "AR" | ZZ 90093 0 | | | |

AR.2

AR000200

<https://en.cisal.it/concealed-2-outlets-diverter-arcanaar000200>

2023-06-02