

Exposed part for con.thermo.shower valve, 2-outlet ALMA_A3018100

MODEL **A3018100**

Exposed part for con.thermo.shower valve,
2-outlet, with 2 outlet devistop, without concealed
part, for item ZA018101

AVAILABLE FINISHINGS



21 21 Chrome



2F 2F Brushed Nickel

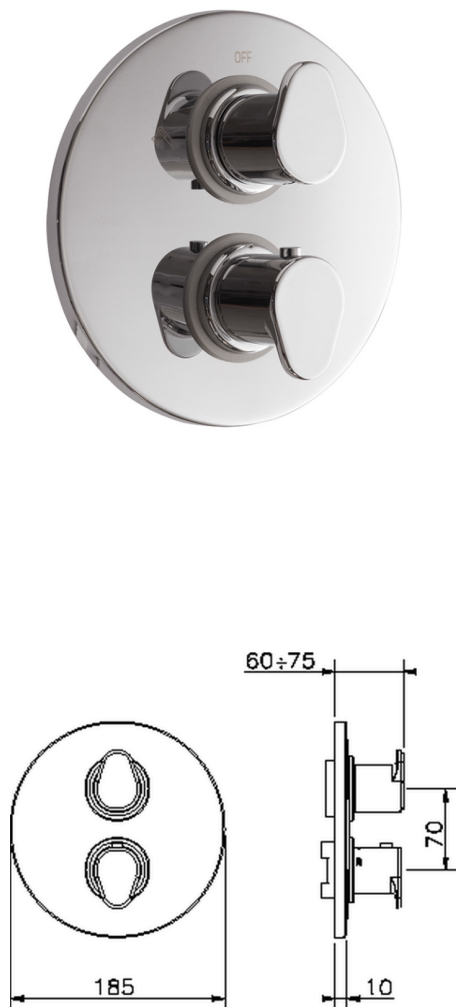


40 40 Matt Black

CHARACTERISTICS

Installation **Concealed**

Required concealed parts **ZA018101**

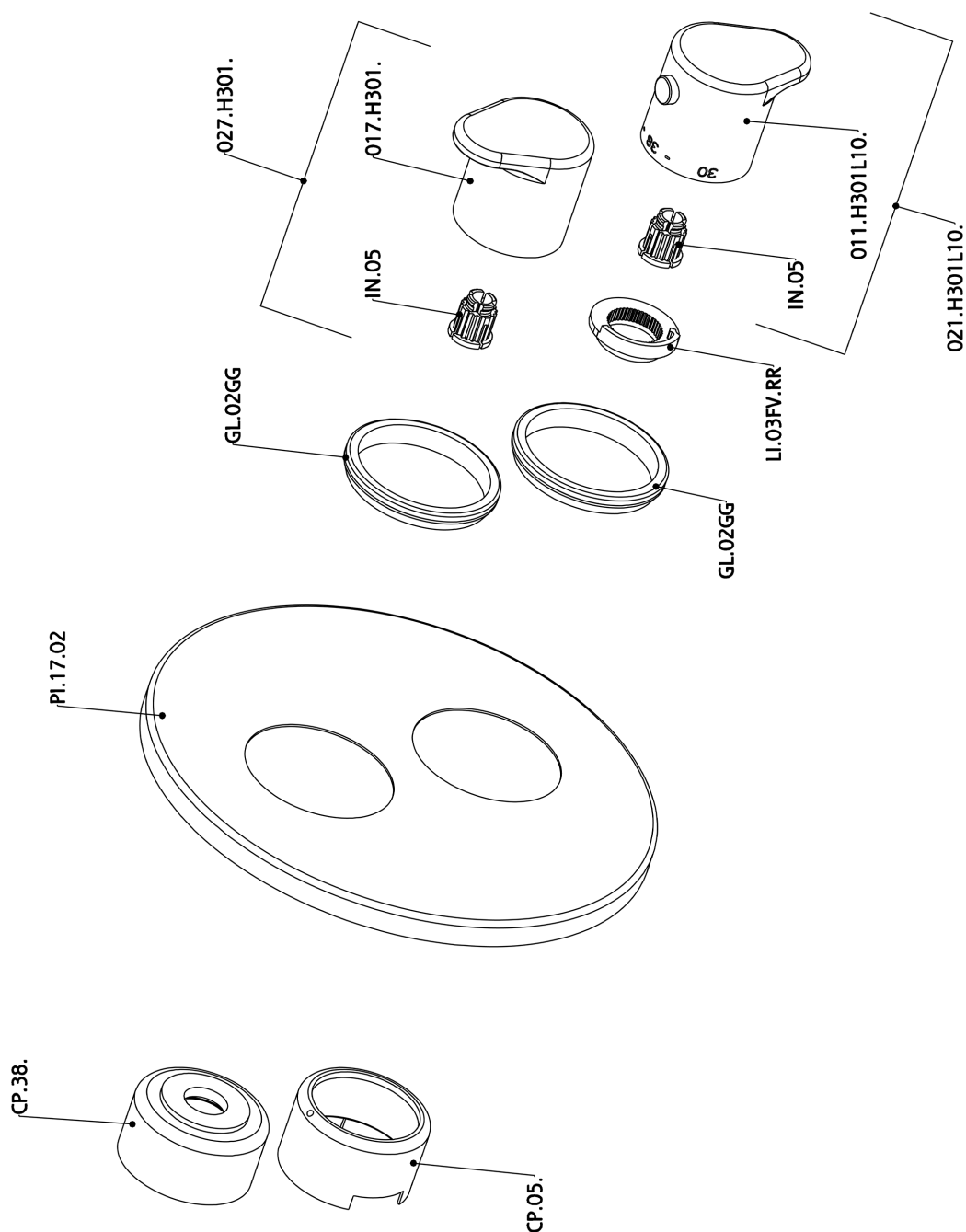


Thermostatic

The Cisal thermostatic is your
personal water manager, helping you
to handle, control and save water and
energy.



Exposed part for con.thermo.shower valve, 2-outlet ALMA_A3018100



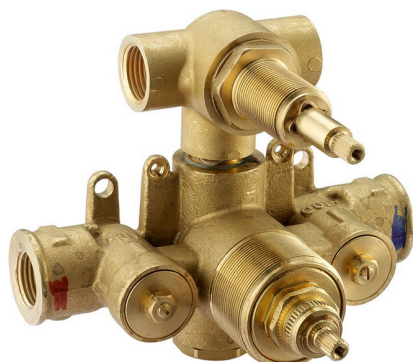
A3018100

<https://en.cisal.it/exposed-part-for-con-thermo-shower-valve-2-outlet-almaa3018100>

Concealed thermostatic shower valve, 2-outlets CONCEALED_ZA018101

MODEL **ZA018101**

Concealed thermostatic shower valve, 2-outlets, with 1/2" 2 outlet devistop cartridge, without trim kit



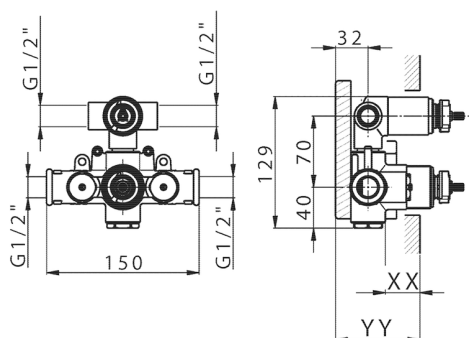
AVAILABLE FINISHINGS



04 04 Without finishing

CHARACTERISTICS

Concealed **1**
 Cartridge Spare Parts **24.04A.PP**
8x20 Plus P Thermostatic Valve



Piastra/Plate/Plaque/Platte/Placa

2-3mm: XX 25-40 YY 76-91

10 mm: XX 16-31 YY 65-80



DeviaStop

The Cisal Devia Stop technology allows to adjust the water flow and to direct it to the selected output point (overhead soaker, hand shower, etc).



Thermostatic

The Cisal thermostatic is your personal water manager, helping you to handle, control and save water and energy.



2024-05-03