

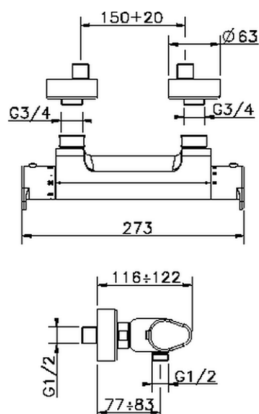
## Thermostatic shower mixer ALMA\_A3T01010

MODEL **A3T01010**

Thermostatic shower mixer, without shower set, 1/2" M flexible connection

### AVAILABLE FINISHINGS

-  **21** 21 Chrome
-  **2F** 2F Brushed Nickel
-  **40** 40 Matt Black



### CHARACTERISTICS

Cartridge Spare Parts **22.04A.AR - ZZ97279004**

**Argo 2 (long filter) Thermostatic Valve**



#### SafeTouch

The Cisal SafeTouch system maintains the mixer body cool to the touch during operation.

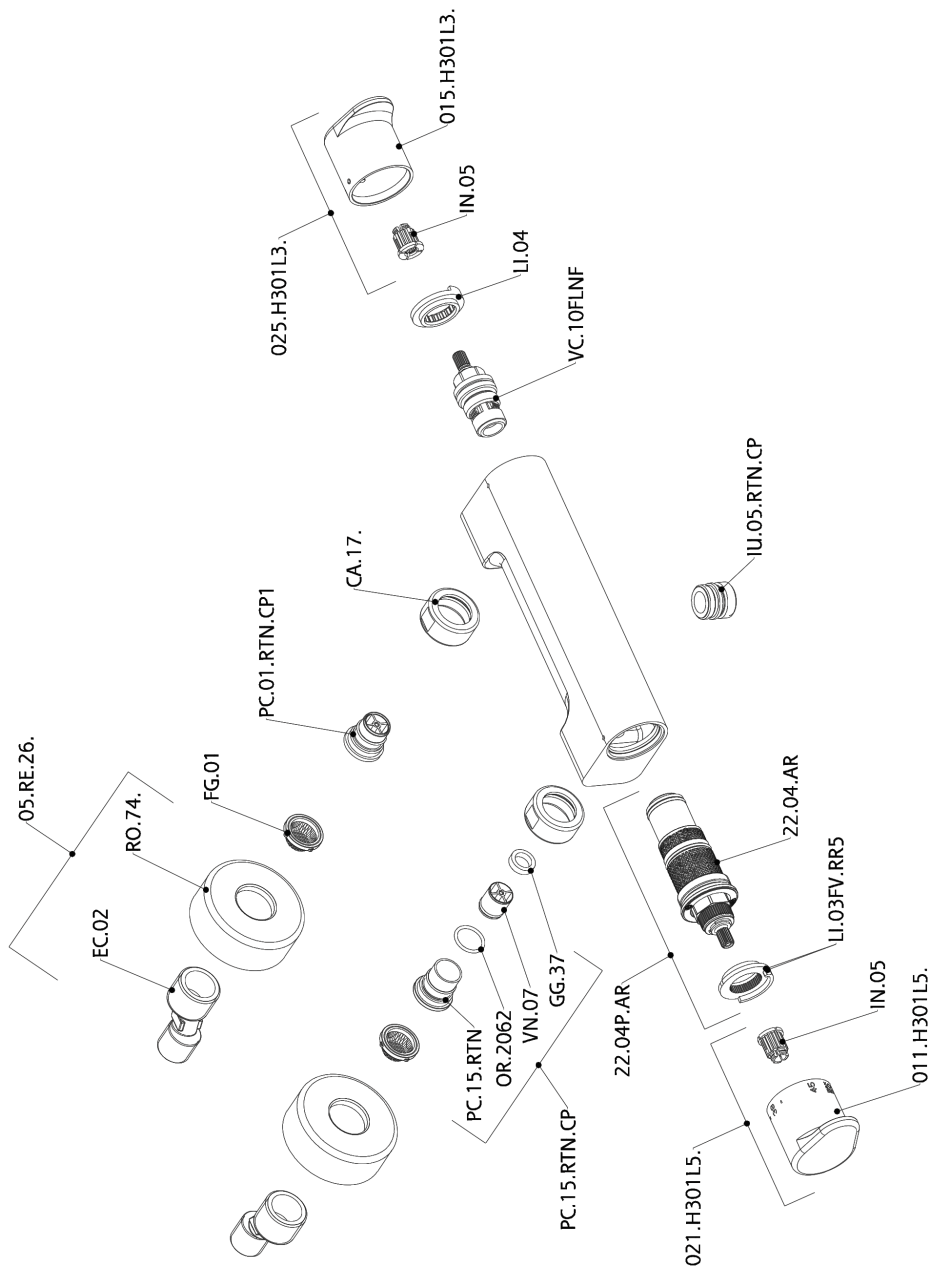


#### Thermostatic

The Cisal thermostatic is your personal water manager, helping you to handle, control and save water and energy.



## Thermostatic shower mixer ALMA\_A3T01010



A3T01010

<https://en.cisal.it/thermostatic-shower-mixer-agma-a3t01010>

2026-04-09