

## Concealed stop valve TR\_TR000300

MODEL **TR000300**

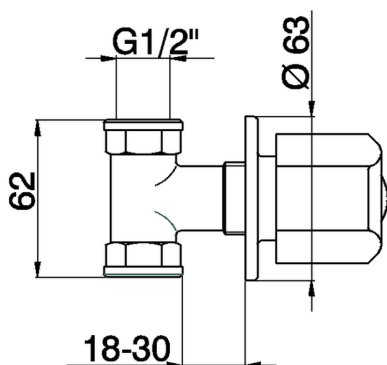
Concealed stop valve, 1/2" F outlet, without handle

AVAILABLE FINISHINGS



**21** 21 Chrome

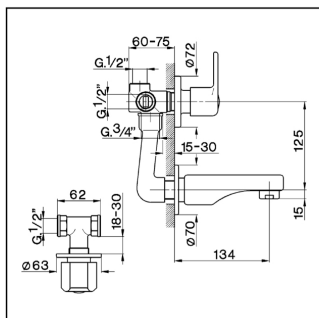
CHARACTERISTICS



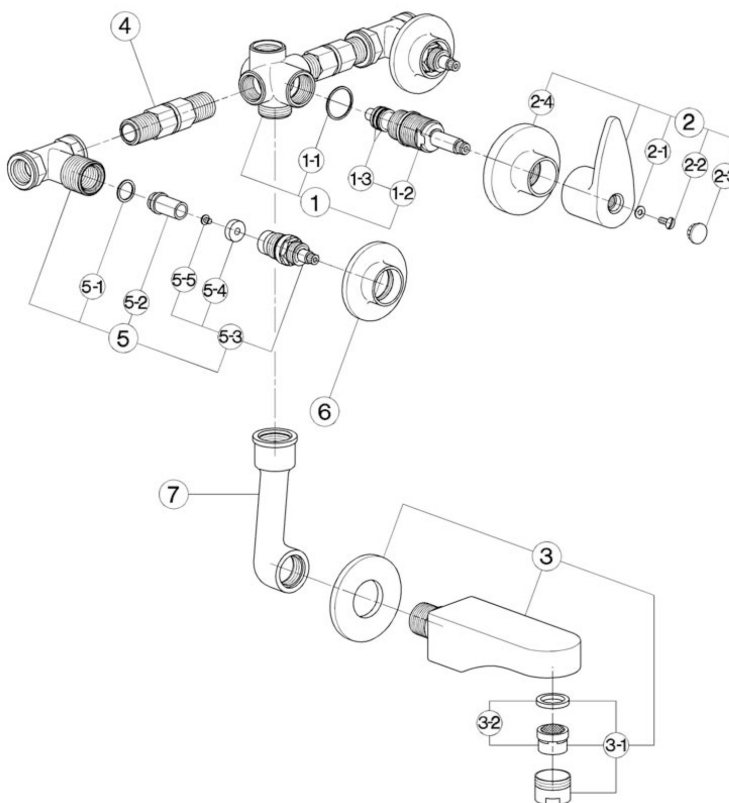
**Concealed stop valve TR\_TR000300**

**cisal**

**TR 00021** (TR 00020 - TR 00030)



- Gruppo vasca - doccia incasso
- *Concealed bath-shower mixer*
- UP-Badebatterie
- *Mélangeur bain/douche à encastrer*



| bar | PORTATA BOCCA DI EROGAZIONE ★<br>SPOUT FLOW RATE<br>DURCHFLOSS WANNENEINLAUF<br>DEBIT BEC DEVERSEUR<br>l/min. |
|-----|---|
| 0.5 | 10  |
| 1   | 14  |
| 2   | 20  |
| 3   | 24.5  |
| 4   | 28  |
| 5   | 31.5  |

\* con resistenza silenziosa della classe di portata C (30 l/min. a 3 bar)  
with hydraulic resistance of flow rate class C (30 l/min. at 3 bar)  
mit geräuscharmen Widerstand der Durchflussklasse C (30 l/min. bei 3 bar)  
avec aérateur classe C (30 l/min. à 3 bar)

| NR. | DESCRIZIONE<br>DESCRIPTION<br>BESCHREIBUNG<br>DESCRIPTION   | N. CODICE<br>CODE NO.<br>WERKSNR.<br>NR. CODE | NR. | DESCRIZIONE<br>DESCRIPTION<br>BESCHREIBUNG<br>DESCRIPTION  | N. CODICE<br>CODE NO.<br>WERKSNR.<br>NR. CODE | NR. | DESCRIZIONE<br>DESCRIPTION<br>BESCHREIBUNG<br>DESCRIPTION   | N. CODICE<br>CODE NO.<br>WERKSNR.<br>NR. CODE |
|-----|---|---|-----|--|---|-----|---|---|
| 1   | Gruppo deviazione incasso "TR"<br>Diverter concealed "TR"<br>Umstelloberteil "TR"<br>Inverseur B/D "TR"   | ZZ 92733 0                                    | 3   | Bocca per incasso<br>Spout concealed<br>Auslauf-UP<br>Bec à encastrer  | ZA 00024 0                                    | 5-5 | Vite M.4x4,5 tb. Ø8 l.cr.<br>Screw M.4x4,5<br>Schraube M.4x4,5<br>Vis M.4x4,5   | ZZ 92625 0                                    |
| 1-1 | Guarnizione fibra 27x24x1<br>Gasket rubber 27x24x1<br>Fiberdichtung 27x24x1<br>Joint en fibre rouge 27x24x1   | ZZ 92687 0                                    | 3-1 | Aeratore M.28x1 IC<br>Mousseur M.28x1 IC<br>Perlator M.28x1 IC<br>Mousseur M.28x1 IC   | ZZ 92837 0                                    | 6   | Cappuccio per rubinetto incasso "TR"<br>Escutcheon for concealed stop cock "TR"<br>Abdeckkappe "TR"<br>Rosace - robinet "TR"        | ZZ 92593 0                                    |
| 1-2 | Vitone per deviazione incasso<br>Diverting valve for concealed mixer<br>Umstelloberteil<br>Tête pour inverseur  | ZZ 92769 0                                    | 3-2 | Cartuccia per aeratore M.28x1<br>Mousseur cartridge M.28x1<br>Kart. f/Perlator M.28x1<br>Cartouche x mousseur M.28x1               | ZZ 92694 0                                    | 7   | Raccordo collegamento a pipa per incasso<br>Connection for concealed mixer<br>UP - Verbindungsset<br>Raccord x mèl. B/D à encastrer | ZZ 92592 0                                    |
| 1-3 | O.R. 11 NBR 75 SH.<br>O.R. 11 NBR 75 SH.<br>O.R. 11 NBR 75 SH.<br>O.R. 11 NBR 75 SH.  | ZZ 92690 0                                    | 4   | Raccordo universale per gruppo incasso<br>Connection for concealed mixer<br>Stand-Anschluss<br>Raccord universel                   | ZZ 92600 0                                    |     |   |   |
| 2   | Maniglia e cappuccio deviazione incasso "TR"<br>Handle with escutcheon for diverter "TR"<br>Griff + Kappe UP - Umst. "TR"<br>Craisillon + rosace "TR" | ZZ 90012 0                                    | 5   | Rubinetto incasso 1/2"<br>Concealed stop cock 1/2"<br>Unterputventil 1/2"<br>Robinet à encastrer 1/2"                              | ZZ 92732 0                                    |     |   |   |
| 2-1 | Rondella ottone 10x4,5x0,8<br>Ring in brass 10x4,5x0,8<br>Unterlegscheibe 10x4,5x0,8<br>Joint laiton 10x4,5x0,8                                       | ZZ 92663 0                                    | 5-1 | Guarnizione alluminio cotto 18x14,2x1<br>Gasket aluminium 18x14,2x1<br>Dichtung 18x14,2x1<br>Joint aluminium 18x14,2x1             | ZZ 92667 0                                    |     |   |   |
| 2-2 | Vite M.4,5x10 tb. tc. zigrinata<br>Screw M.4,5x10<br>Schraube M.4,5x10<br>Vis M.4,5x10  | ZZ 92609 0                                    | 5-2 | Sede per rubinetto incasso<br>Seat for concealed stop cock<br>Sitz f/UP - Ventili<br>Siège robinet encastrer                       | ZZ 92611 0                                    |     |   |   |
| 2-3 | Placchetta a scatto deviatore vasca "TR"<br>Cap for diverter "TR"<br>Abdeckkappe "TR"<br>Plaqueette cache - vis inverseur "TR"                        | ZZ 92610 0                                    | 5-3 | Vitone 1/2" "TR"<br>Headvalve 1/2" "TR"<br>Oberteil 1/2" "TR"<br>Tête 1/2" "TR"  | ZZ 92869 0                                    |     |   |   |
| 2-4 | Cappuccio centrale per dev. gruppo incasso<br>Escutcheon for concealed diverter<br>Abdeckkappe<br>Rosace - inverseur à encastrer                      | ZZ 92594 0                                    | 5-4 | Guarnizione NBR 90 SH. 16,9x5,5x5<br>Gasket NBR 90 SH. 16,9x5,5x5<br>Dichtung NBR 90 SH. 16,9x5,5x5<br>Joint NBR 90 SH. 16,9x5,5x5 | ZZ 92699 0                                    |     |   |   |

TR000300

<https://en.cisal.it/concealed-stop-valve-tr-tr000300>

2026-02-23