

Washbasin electronic faucet TRONIC_TN001541

MODEL **TN001541**

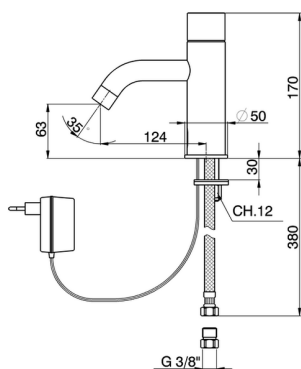
Washbasin electronic faucet, net supply

AVAILABLE FINISHINGS



21 21 Chrome

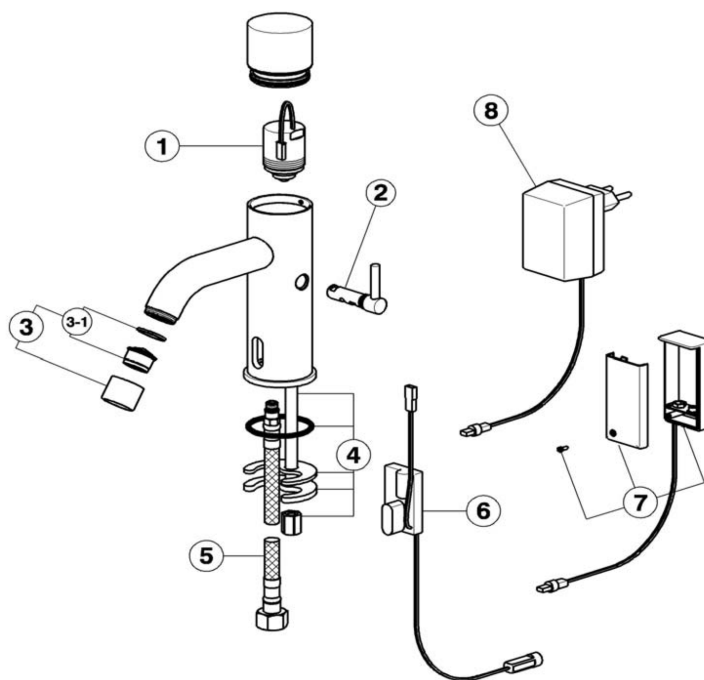
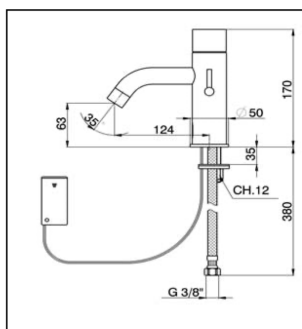
CHARACTERISTICS



Washbasin electronic faucet TRONIC_TN001541

cisal

TN 00054 0 (TN 00054 1 - TN 00154 0 - TN 00154 1)



NR	DESCRIZIONE DESCRIPTION DESCRIPTION BESCHREIBUNG DESCRIPCIÓN	N.CODE NR. CODE CODE NO. WERSKNR. N.CODIGO
	Elettrovalvola per lavabo Electronvanne pour lavabo Electronic valve for basin Electroválvula para lavabo Elektroventil für Waschtischbatterie	
1		ZZ950360
	Miscelatore di temperatura per lavabo Mitigeur de temperature pour lavabo Temperature's mixer for basin Mezclador de temperatura para lavabo Mischungsvorrichtung für Waschtischbatterie	
2		ZZ950370
	Aeratore M22x1 IB Mousseur M22x1 IB Mousseur M22x1 IB Aireador M22x1 IB Perlator M22x1 IB	
3		ZZ950430
	Cartuccia per aeratore M.24x1 Cartucho pour mousseur M.24x1 Mousseur cartridge M.24x1 Cartucho para aireador M.24x1 Kartusche fuer Perlator M.24x1	
3-1		ZZ926950
	Set installazione lavabo elettronico Set d'installation pour robinet électronique Installation set	
4		ZZ950380
	Juego de instalación lavabo electrónico Befestigungsset f/elektronische Waschtischarm	
	Flexibile M8x1 SX - G3/8" L450 Flex M8x1 SX - G3/8" L450 Flex hose M8x1 SX - G3/8" L450 Flexo M8x1 SX - G3/8" L450	
5		ZZ950390
	Schlauch M8x1 SX - G3/8" L450	

NR	DESCRIZIONE DESCRIPTION DESCRIPTION BESCHREIBUNG DESCRIPCIÓN	N.CODE N.CODE CODE NO WERSKNR N.CODIGO
	Parte elettronica per lavabo Electronique pour lavabo	
6	Electronic mixer set Parte electrónica para lavabo Elektronik für Waschtischarmatur Scatola per batteria	ZZ950400
7	Boite pour pile Box for battery Caja para batería Gehäuse für Batterie	ZZ950410
8	Trasformatore per lavabo elettronico Transformateur pour robinet électronique Transformer for Electronic mixer Transformador para lavabo electrónico Steckernetzteil f/elektronische Waschtischarm.	ZZ950420

[illegible]

TN001541

<https://en.cisal.it/washbasin-electronic-faucet-tronic-tn001541>

2026-02-03