

## Thermostatic shower mixer ALMA\_A3T01010

MODEL **A3T01010**

Thermostatic shower mixer, without shower set, 1/2" M flexible connection



### AVAILABLE FINISHINGS



**21** 21 Chrome



**2F** 2F Brushed Nickel

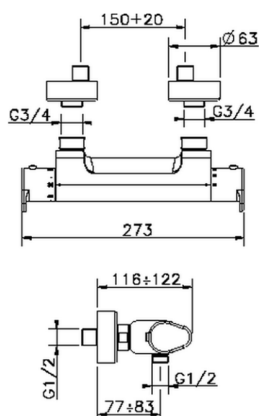


**40** 40 Matt Black

### CHARACTERISTICS

Cartridge Spare Parts **22.04A.AR - ZZ97279004**

**Argo 2 (long filter) Thermostatic Valve**



### SafeTouch

The Cisal SafeTouch system maintains the mixer body cool to the touch during operation.

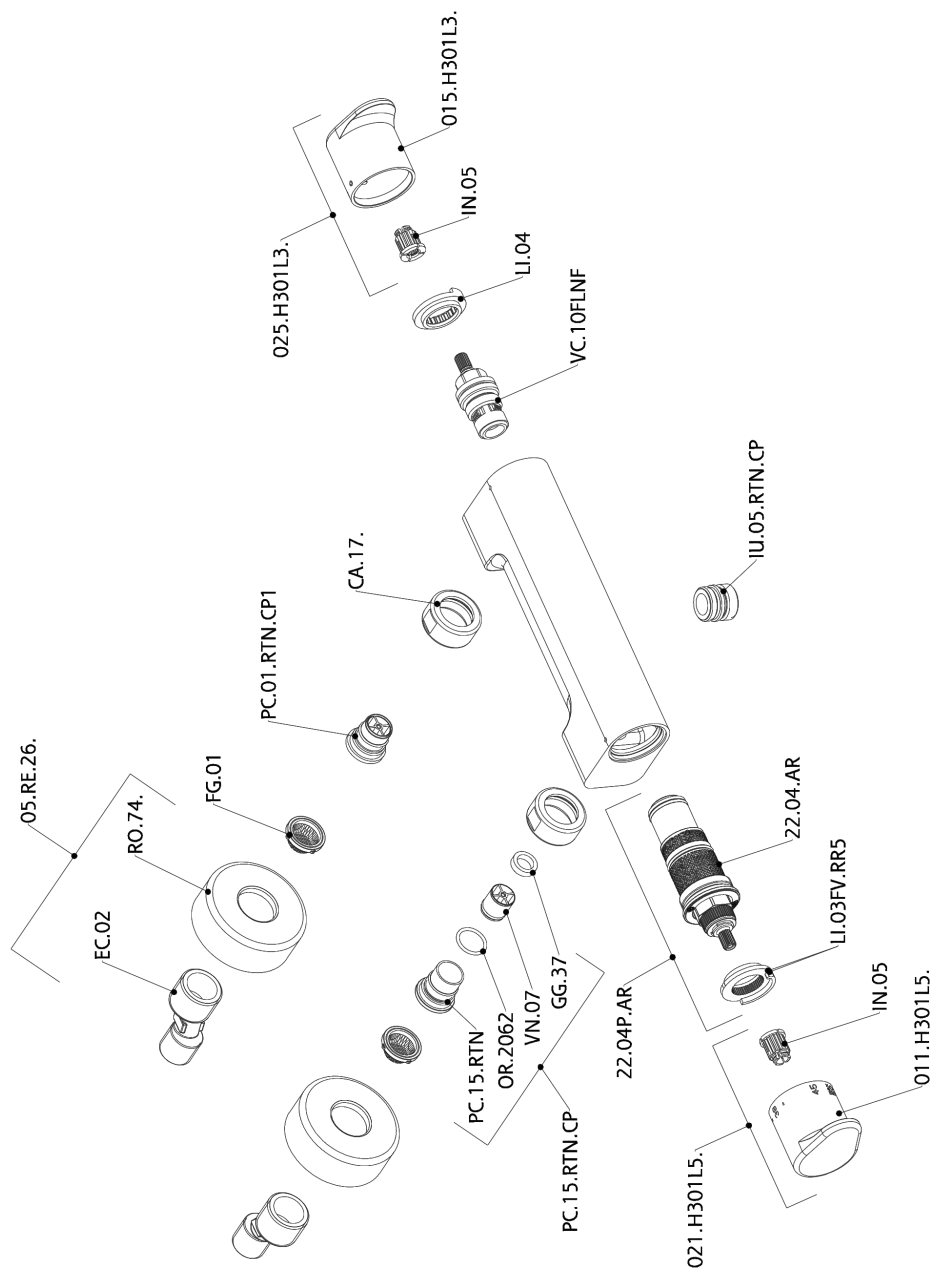


### Thermostatic

The Cisal thermostatic is your personal water manager, helping you to handle, control and save water and energy.



## Thermostatic shower mixer ALMA\_A3T01010



A3T01010

<https://en.cisal.it/thermostatic-shower-mixer-agma-a3t01010>

2026-01-11