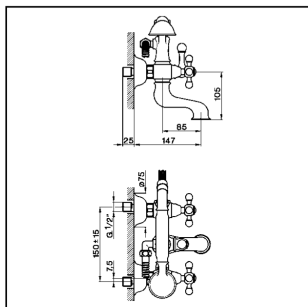


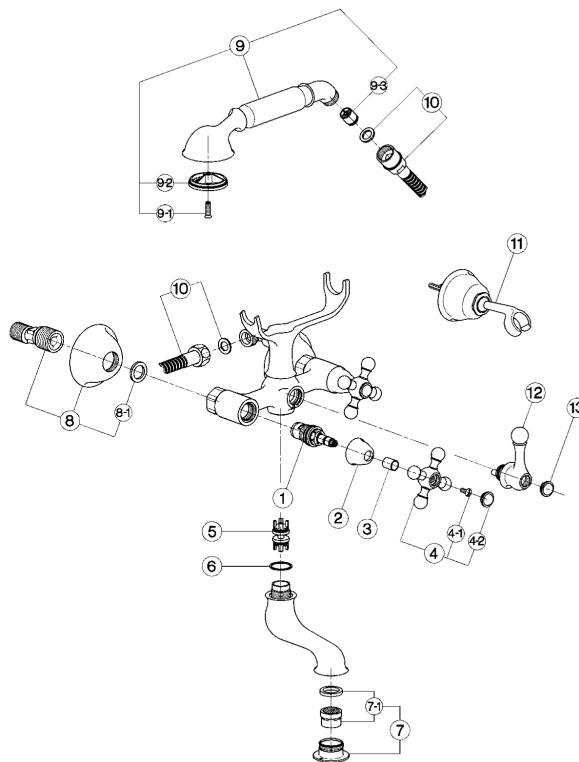
Bath mixer, full equipment ARCANA CERAMIC_AC000102

cisal

AC 00010 (AC 00007 - AC 00012 - AC 00013)



- Gruppo vasca
- Bath mixer
- Badebatterie
- Mélangeur bain/douche



| bar | PORTATA BOCCA DI EROGAZIONE * SPOUT FLOW RATE DURCHFLOSS WANNENEINLAUF DÉBIT BEC DÉVERSEUR l/min. |
|-----|---------------------------------------------------------------------------------------------------------------|
| 0,5 | 11 |
| 1 | 15,5 |
| 2 | 22,5 |
| 3 | 27,5 |
| 4 | 31,5 |
| 5 | 35 |

* con resistenza silenziosa della classe di portata C (30 l/min. a 3 bar)
with hydraulic resistance of flow rate class C (30 l/min. at 3 bar)
mit geräuscharmen Widerstand der Durchflussklasse C (30 l/min. bei 3 bar)
avec aérateur classe C (30 l/min. à 3 bar)

| NR. | DESCRIZIONE DESCRIPTION BESCHREIBUNG DESCRIPTION | N. CODICE CODE NO. WERKSNR. NR. CODE | NR. | DESCRIZIONE DESCRIPTION BESCHREIBUNG DESCRIPTION | N. CODICE CODE NO. WERKSNR. NR. CODE | NR. | DESCRIZIONE DESCRIPTION BESCHREIBUNG DESCRIPTION | N. CODICE CODE NO. WERKSNR. NR. CODE |
|-----|--------------------------------------------------------------------------------------------------------------------------------------------------------------------------------|-----------------------------------------------|-----|--------------------------------------------------------------------------------------------------------------------------------------------------------------------------------------------------|-----------------------------------------------|-----|--------------------------------------------------------------------------------------------------------------------------------------------------------|-----------------------------------------------|
| 1 | Vitello ceramico DX per monofori e gruppi "AC" Ceramic headvalve 1/2" right "AC"-short Keramikoberteil 1/2"-rechts-"AC"-kurz Tête céramique 1/2" droite "AC" - courte | ZZ 92858 0 | 7-1 | Cartuccia per aeratore M. 28x1 Mousseur cartridge M.28x1 Kart. 1/Peñator M.28x1 Cartouche x mousseur M.28x1 | ZZ 92694 0 | 11 | Supporto duplex esterno "AR" Hook handshower "AR" Wandhalter 1/ "AR" Support mural "AR" | ZZ 90082 0 |
| 2 | Capuccio coprivite D32 H.21 "AC" Escutcheon D32 H.21 "AC" headvalve Abdeckkappe D32 H.21 "AC" Rosace couvre-tête D32 H.21 "AC" | ZZ 92652 0 | 8 | Eccentrico con rosone "AC" Excentric connection with escutcheon "AC" S - Anschluss m. Rosette "AC" Excentrique + rosace "AC" | ZZ 92826 0 | | Deviatore per gruppo vasca "AR" Diverter for bath mixer "AR" Umsteller - WB - "AR" Croisillon inverseur "AR" | |
| 3 | Tubetto copriasta "AR" H.15,5 Sliding cover tube "AR" H.15,5 Abdeckkappe Oberteil "AR" H.15,5 Tube couvre-tête "AR" H.15,5 | ZZ 92619 0 | 8-1 | Guarnizione NBR 90 SH. 24x16x2,7 Gasket NBR 90 SH. 24x16x2,7 Dichtung NBR 90 SH. 24x16x2,7 Joint NBR 90 SH. 24x16x2,7 | ZZ 92689 0 | | Guarnizione NBR 90 SH. 24x16x2,7 Placchetta a vite maniglia "AR" Cap for handle "AR" Abdeckkappe "AR" Griff Plaque cache - vis crois. "AR" | |
| 4 | Maniglia "AR" con vite e placchetta Handle with screw and plate "AR" Griff "AR" mit Schraube und Abdeckkappe Croisillon avec vis et plaque "AR" | ZZ 90307 0 | 9 | Doccia per gruppo vasca "AR" Handshower "AR" Handbrause-WB-"AR" Douchette "AR" | ZZ 90078 0 | | | |
| 4-1 | Vite M.4,5x10 lb. tc. zigrinata Screw M.4,5x10 Schraube M.4,5x10 Vis M.4,5x10 | ZZ 92609 0 | 9-1 | Vite di fissaggio diffusore per doccia in ottone Fixing screw for spray-kit handshower Befestigungsschraube f. Einsatz 1.Br. in Messing Vis fixation diffuseur pour douchette en laiton | ZZ 92640 0 | | | |
| 4-2 | Placchetta a vite maniglia "AR" Cap for handle "AR" Abdeckkappe "AR" Griff Plaque cache - vis crois. "AR" | ZZ 92617 0 | 9-1 | Vite di fissaggio diffusore per doccia in ABS Fixing screw for spray-kit ABS handshower Befestigungsschraube f. Einsatz 1.Bräuse in ABS Vis de fixation diffuseur pour douchette en ABS | ZZ 93401 0 | | | |
| 5 | Valvola deviazione per gruppo vasca Diverging valve for bath mixer Umstellventil Tête pour inverseur | ZZ 92779 0 | 9-2 | Diffusore doccia "AR" Spray-kit handshower "AR" Einsatz 1.Bräuse "AR" Diffuseur douchette "AR" | ZZ 90544 0 | | | |
| 6 | Guarnizione fibra 26x22,5x1 Gasket rubber 26x22,5x1 Fiberring 26x22,5x1 Joint en fibre 26x22,5x1 | ZZ 92692 0 | 9-3 | Valvola anti-ritorno Ø15 per doccia Back-flow valve Ø15 Durchflussverhinderer Ø15 Clapet anti-retour Ø15 | ZZ 92956 0 | | | |
| 7 | Bordino con aeratore M. 28x1 "AR" Overfill with mousseur M.28x1 "AR" Peñator M.28x1 "AR" Garniture avec mousseur M.28x1 "AR" | ZZ 92784 0 | 10 | Flexibile 150 cm Ø14 1/2"x1/2" DA conico Flex 150 cm Ø14 1/2"x1/2" conic Brauseschlauch 150 cm Ø14 1/2"x1/2" Flex 150 cm Ø14 1/2"x1/2" | ZA 00901 0 | | | |

AC.1

AC000102

<https://en.cisal.it/bath-mixer-full-equipment-arcana-ceramic-ac000102>

2026-06-14