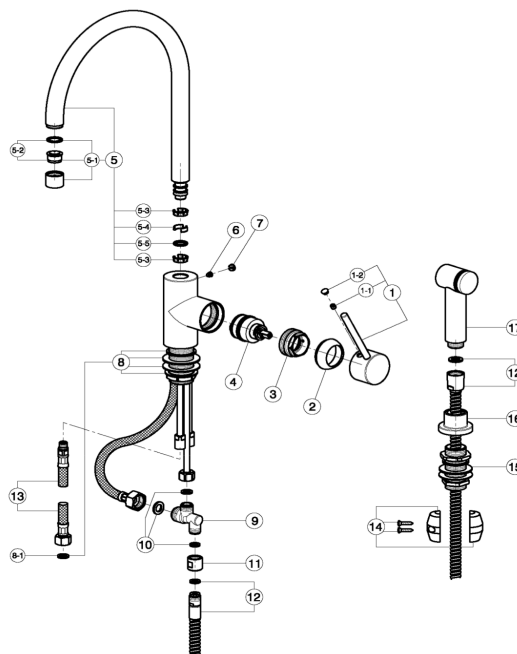
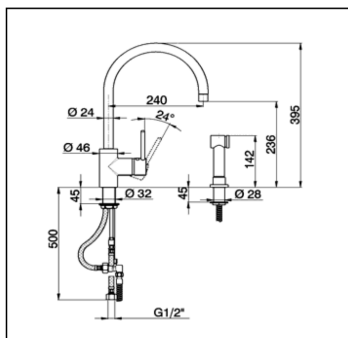


Single lever sink mixer with pull out handspray KITCHEN_LL004570

cisal

LL 00457



| NR. | DESCRIZIONE DESCRIPTION BESCHREIBUNG DESCRIPTION | N.CODICE CODE NO. WERSKNR. NR.CODE | NR. | DESCRIZIONE DESCRIPTION BESCHREIBUNG DESCRIPTION | N.CODICE CODE NO. WERSKNR. NR.CODE | NR. | DESCRIZIONE DESCRIPTION BESCHREIBUNG DESCRIPTION | N.CODICE CODE NO. WERSKNR. NR.CODE |
|-----|---|---|-----|--|---|-----|---|---|
| 1 | Leva monocomando "LL" Lever "LL" Hebel "LL" Levier "LL" | ZZ944020 | 5-3 | Anello per canna Ring for spout Ring fuer Auslauf Bague pour bec | ZZ941020 | 11 | Racc.valv.monoc.lavel. Valve's connection for single lever sink mix Anschluss Ventil f.Spültischbatterie Raccord clapet mitigeur évier | ZZ943660 |
| 1-1 | Grano punta piana inox M.6x6 Screw-stainless steel M.6x6 Madenschraube M.6x6 Vis speciale inox M.6x6 | ZZ926450 | 5-4 | Rondella antifrizione Dichtung fuer Huelse Washer for covering tube Joint pour bague couverture | ZZ941030 | 12 | Flessibile 150cm Ø14 1/2"cn x M15x1 Flex 150 cm Ø14 1/2"CN x M15x1 Braueschlauch 150 cm Ø14 x M15x1 Flex 150 cm Ø14 1/2"cn x M15x1 | ZZ927740 |
| 1-2 | Placchetta per leva neutra Cap for lever Abdeckkappe f/Hebel Plaqueette levier | ZZ933470 | 5-5 | O.R. 11 NBR 75 SH. O.R. 11 NBR 75 SH. O.R. 11 NBR 75 SH. | ZZ926900 | 13 | Flessibile M.11x1 3/8" L.365 Flex M.11x1 3/8" L.365 Anschlusschlauch M.11x1 3/8" L.365 Flex M.11x1 3/8" L.365 | ZZ928420 |
| 2 | Copricartuccia monocomando Escutcheon cartridge Abdeckkappe Couvre-cartouche | ZZ933510 | 6 | Vite M.6 Screw M.6 Schraube M.6 Vis M.6 | ZZ941090 | 14 | Peso piombo completo Lead weight Bleigewicht kpl Poids en plomb | ZZ927750 |
| 3 | Calotta bloccaggio cartuccia Nut for mixing valve Mutter f/Kartusche Ecrou pour cartouche | ZZ933530 | 7 | Placchetta per leva neutra Cap for lever Abdeckkappe f/Hebel Plaqueette levier | ZZ927110 | 15 | Supporto doccia batteria bordo vasca "BA" Deck-mounted handshower support "BA" Brausehalter "BA" Support douche "BA" | ZZ934020 |
| 4 | Cartuccia monocomando Mixing valve Kartusche Cartouche mitigeurs | ZZ931960 | 8 | Set installazione monoc.doccia estraibile Installation set single lever Befestigungsset Set installation | ZZ928860 | 16 | Capp.supp.doccia monoc.lavel. Escutcheon shower Abdeckkappe Rosace douche | ZZ943700 |
| 5 | Canna alta Ø24 Interasse 240 Swinging spout 240 Ø24 Auslauf-Rohr-U-240 Ø24 Bec orientable 240 Ø24 | ZZ944030 | 8-1 | Guarnizione fibra 3/8" Gasket rubber 3/8" Fiberdichtung 3/8" Joint en fibre 3/8" | ZZ926960 | 17 | Doccia estr.monoc.lavel. Handspray Herausziehbare Brause Douchette extr.évier | ZZ943710 |
| 5-1 | Aeratore M.22x1 IA Cascade Mousseur M.22x1 IA Cascade Perlator M.22x1 IA Cascade Mousseur M.22x1 IA Cascade | ZZ932830 | 9 | Valv.2 vie monoc.lavel. 2 way valve for single lever sink mixer 2 Wege Ventil f.Spültischbatterie Clapet 2 voies mitigeur évier | ZZ943650 | | | |
| 5-2 | Cartuccia per aeratore M. 22x1 Cascade Mousseur cartridge M.22x1 Cascade Kart. f/Perlator M.22x1 Cascade Cartouche x mousseur M.22x1 Cascade | ZZ933390 | 10 | Packings' set for single lever sink mixer Set Dichtungen f.Spültischbatterie Set joints mitigeur évier | ZZ943640 | | | |

LL004570

<https://en.cisal.it/single-lever-sink-mixer-with-pull-out-handspray-kitchen-ll004570>

2026-04-08