




## Thermostatic bath mixer ALMA\_A3T21010

MODEL **A3T21010**

Thermostatic bath mixer, without shower set, 1/2" M flexible connection



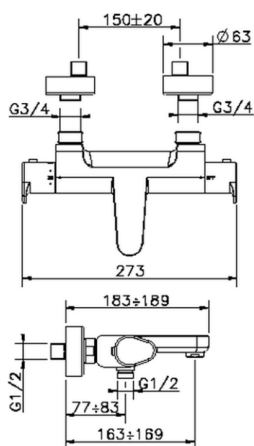
### AVAILABLE FINISHINGS

-  **21** 21 Chrome
-  **2F** 2F Brushed Nickel
-  **40** 40 Matt Black

### CHARACTERISTICS

Cartridge Spare Parts **22.04A.AR - ZZ97279004**

**Argo 2 (long filter) Thermostatic Valve**



#### DeviaStop

The Cisal Devia Stop technology allows to adjust the water flow and to direct it to the selected output point (overhead soaker, hand shower, etc).



#### SafeTouch

The Cisal SafeTouch system maintains the mixer body cool to the touch during operation.

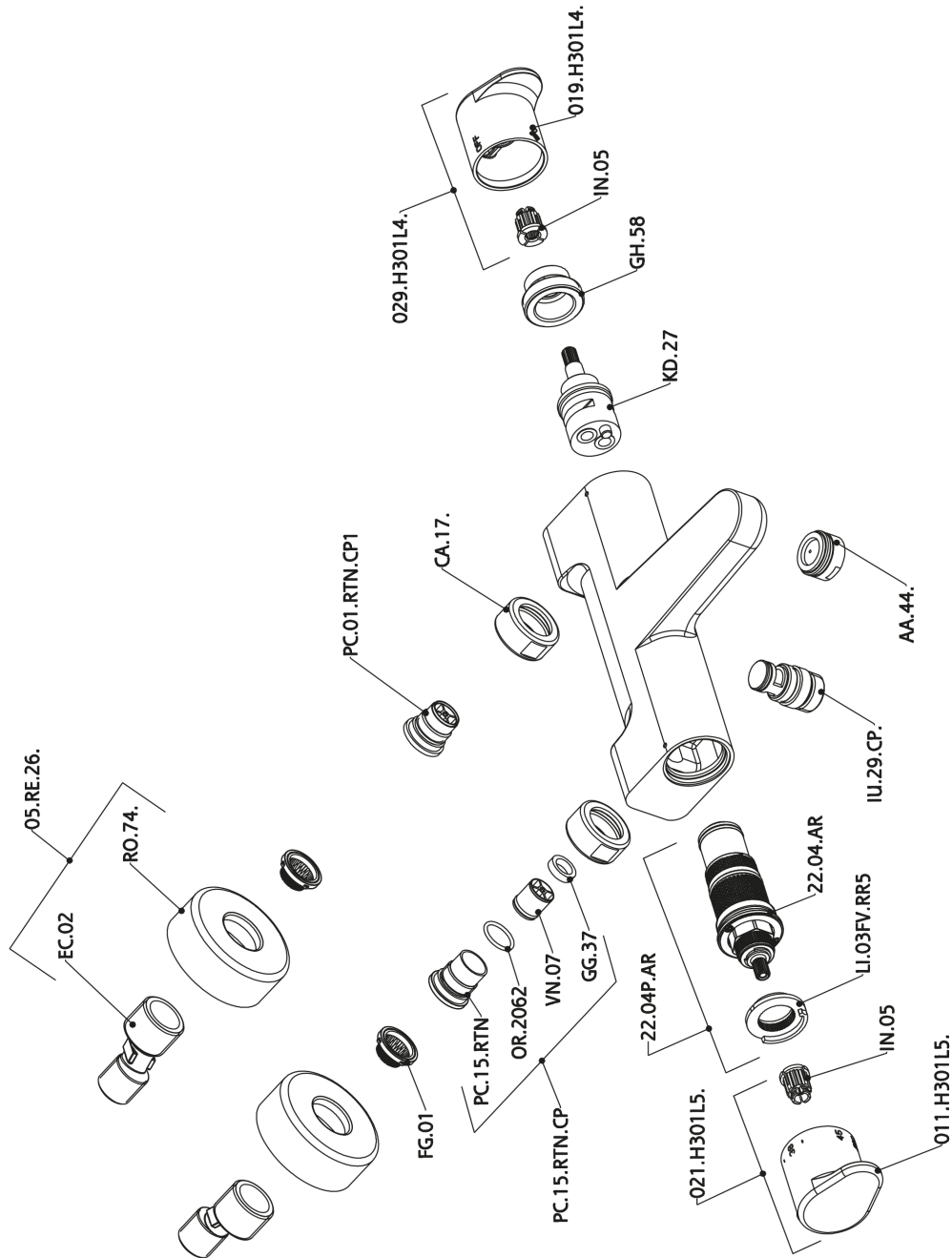


#### Thermostatic

The Cisal thermostatic is your personal water manager, helping you to handle, control and save water and energy.



## Thermostatic bath mixer ALMA\_A3T21010



A3T21010

<https://en.cisal.it/thermostatic-bath-mixer-agma-a3t21010>

2026-06-13