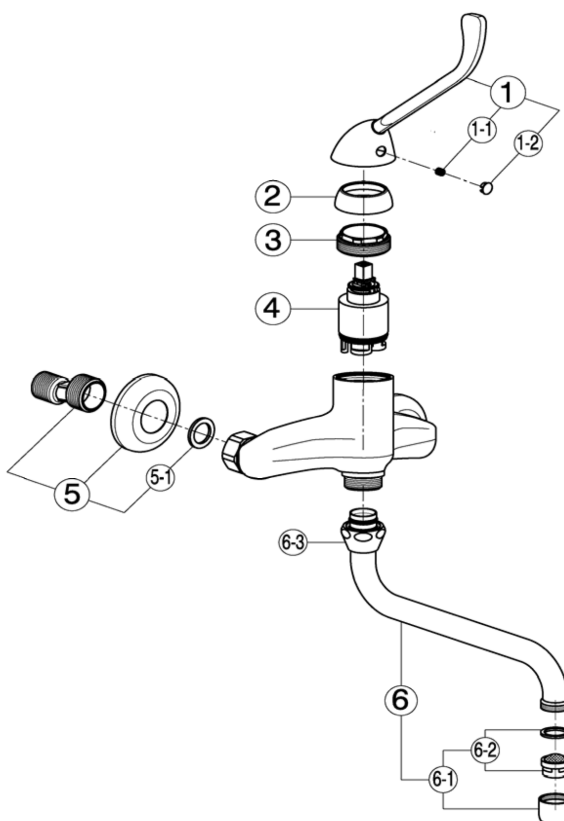
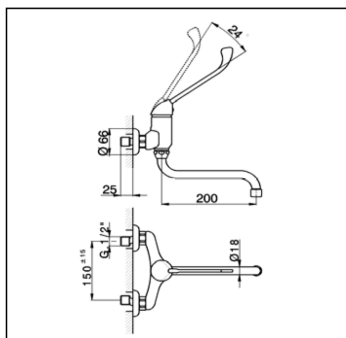


## Exposed single lever sink mixer CLINIC\_CL000401

**cisal**

**CL 00040**



NR.	DESCRIZIONE DESCRIPTION BESCREIBUNG	N.CODE CODE NO. WERSKNR. NR.CODE
	Leva monocomando "CL"	
1	Lever "CL" Hebel "CL" Levier "CL"	ZA005020
	Grano punta coppa inox M.5x6	
1-1	Screw-stainless steel M.5x6 Madenschraube M.5x6 Vis speciale inox M.5x6	ZZ940630
	Piacchetta per leva	
1-2	Cap for lever Abdeckkappe f/Hebel Plaquette levier	ZZ927100
	Copricartuccia senza ideogrammi	
2	Escutcheon cartridge without ideogram Abdeckkappe ohne Ideogramm Couvre-cartouche sans ideogramme	ZZ940650
	Calotta bloccaggio cartuccia	
3	Nut for mixing valve Mutter f/kartusche Ecrou pour cartouche	ZZ940660
	Cartuccia monocomando	
4	Mixing valve Kartusche Cartouche mitigeurs	ZZ940340

NR.	DESCRIZIONE DESCRIPTION BESCREIBUNG DESCRIPTION	N.CODE CODE NO. WERSKNR. NR.CODE
	Eccentrico con rosone	
5	Excentric connection with escutcheon S - Anschluss m.Rosette Excentrique + rosace	ZZ927300
	Guarnizione NBR 90 SH. 24x16x2,7	
5-1	Gasket NBR 90 SH. 24x16x2,7 Dichtung NBR 90 SH. 24x16x2,7 Joint NBR 90 SH. 24x16x2,7	ZZ926890
	Canna a S Ø18 interasse 200	
6	Swinging spout 200 Ø18 Auslauf-Rohr-S-200 Ø18 Bec orientable 200 Ø18	ZZ928220
	Aeratore M.22x1 IA	
6-1	Mousseur M.22x1 IA Perlator M.22x1 IA Mousseur M.22x1 IA	ZZ928350
	Cartuccia per aeratore M. 22x1	
6-2	Mousseur cartridge M.22x1 Kart.f/Perlator M.22x1 Cartouche x mousseur M.22x1	ZZ927080
	Calotta 3/4" es.29 Ø19,5	
6-3	Nut 3/4" Ø19,5 Mutter 3/4" Ø19,5 Ecrou 3/4" Ø19,5	ZZ926150

[illegible]

CL000401

<https://en.cisal.it/exposed-single-lever-sink-mixer-clinic-cl000401>

2026-02-03