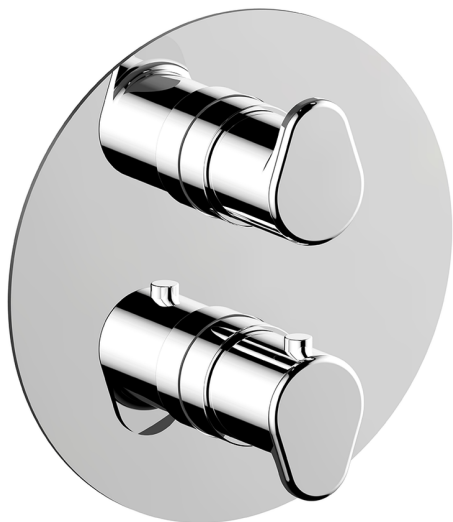


## Exposed part for Thermostatic One Box Valve LINEAVIVA\_LV0BT030


**MODEL**
**LV0BT030**

Exposed part for Thermostatic One Box Valve, with 1-2-3 outlet devistop, Minimum depth of installation: 67 mm, without concealed part, for items ZA00B030-ZA00B031

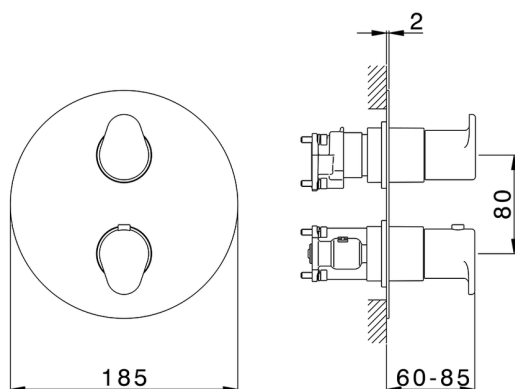
### AVAILABLE FINISHINGS


**21** 21 Chrome

**2B** 2B Polished Nickel

**2F** 2F Brushed Nickel

**40** 40 Matt Black

**4Q** 4Q Matt White


### CHARACTERISTICS

Cartridge Spare Parts **24.04A.PP**
**8x20 Plus P Thermostatic Valve**

Installation **Concealed**

Required concealed parts **ZA00B031**
**ZA00B030**


### DeviaStop

The Cisal Devia Stop technology allows to adjust the water flow and to direct it to the selected output point (overhead soaker, hand shower, etc).

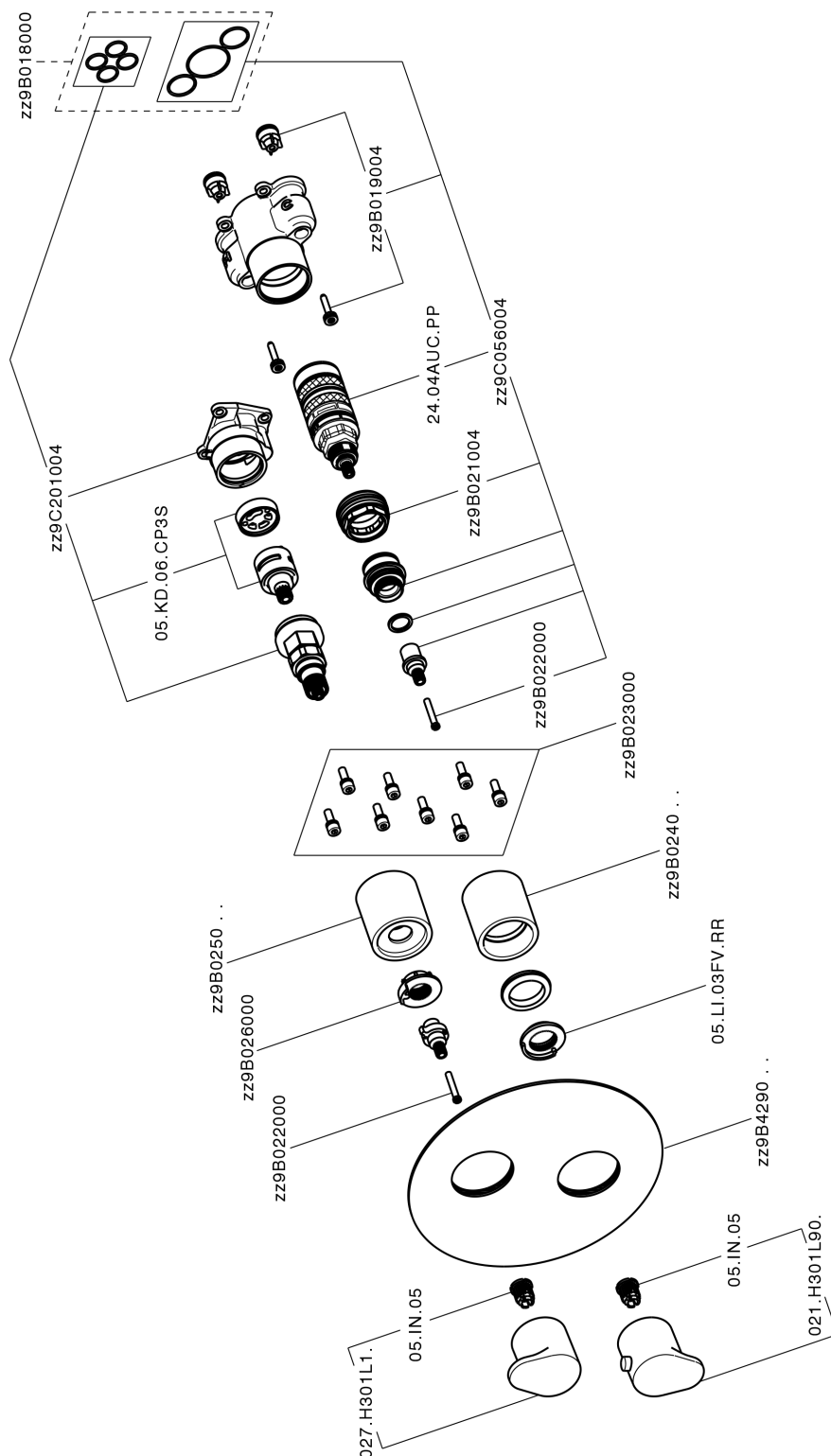


### Thermostatic

The Cisal thermostatic is your personal water manager, helping you to handle, control and save water and energy.



## Exposed part for Thermostatic One Box Valve LINEAVIVA\_LV0BT030



LV0BT030

<https://en.cisal.it/exposed-part-for-thermostatic-one-box-valve-lineavivalv0bt030>

## One Box Universal Concealed Part ONE BOX\_ZA00B031

MODEL **ZA00B031**

One Box Universal Concealed Part, for 1, 2 or 3 outlet thermostatic or single lever, without trim kit, with noise reducers, with sealing gasket

AVAILABLE FINISHINGS



**04** 04 Without finishing

CHARACTERISTICS

Concealed **1**



### Thermostatic

The Cisal thermostatic is your personal water manager, helping you to handle, control and save water and energy.



## One Box Universal Concealed Part ONE BOX\_ZA00B030



MODEL **ZA00B030**

One Box Universal Concealed Part, for 1, 2 or 3 outlet thermostatic or single lever, without trim kit, without noise reducers, with sealing gasket

### AVAILABLE FINISHINGS



**04** 04 Without finishing

### CHARACTERISTICS

Concealed **1**



### Thermostatic

The Cisal thermostatic is your personal water manager, helping you to handle, control and save water and energy.



2024-05-02