

Concealed single lever bath-shower valve **WAVE_WA000210**

MODEL **WA000210**

Concealed single lever bath-shower valve, with concealed part, 2 outlet automatic diverter, Brass minimalistic one spray handshower, 150 cm PVC Flexible Hose



AVAILABLE FINISHINGS



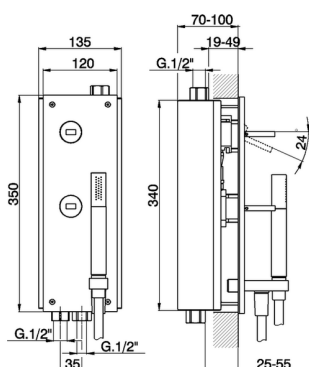
21 21 Chrome



2F 2F Brushed Nickel



2Q 2Q Black Titanium



CHARACTERISTICS

Cartridge Spare Parts **ZZ93197000**

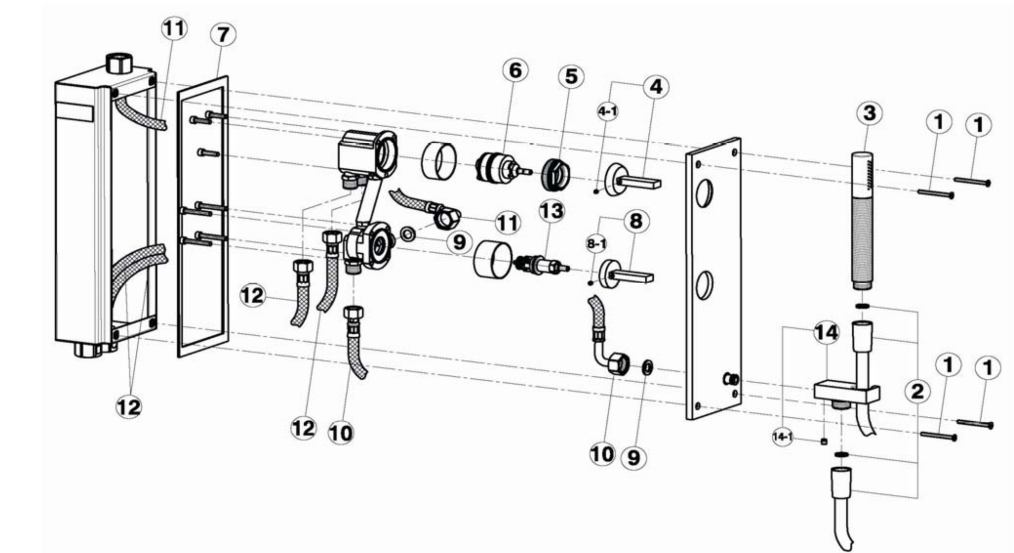
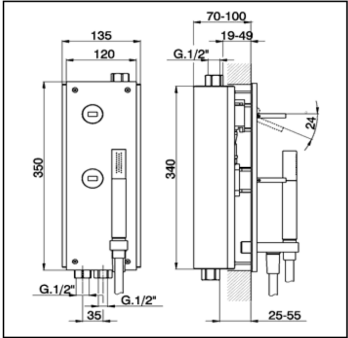
38mm Joystick single-lever cartridge



Concealed single lever bath-shower valve **WAVE_WA000210**

cisal

WA 00021



NR.	DESCRIZIONE DESCRIPTION BESCHREIBUNG DESCRIPTION	N.CODE CODE NO. WERSKNR. NR.CODE
1	Vite M.4x45 Screw M.4x45 Schraube M.4x45 Vis M.4x45 Flex PVC 150 cm Ø14 1/2"x1/2" conico Flex PVC 150 cm Ø14 1/2"x1/2" Braueschl. PVC 150 cm Ø14 1/2"x1/2" Flex.PVC 150 cm Ø14 1/2"x1/2"	ZZ944920
2	Doccia minimale Minimal handshower Handbrause minimal Douchette minimal Leva monocomando "WA" Lever "WA" Hebel "WA" Levier "WA"	DS014090
3	Grano punta plana inox M.4x4 Screw-stainless steel M.4x4 Madenschraube M.4x4 Vis speciale inox M.4x4	ZZ933280
4-1	Calotta bloccaggio cartuccia Nut for mixing valve Mutter f/Kartusche Ecrout pour cartouche	ZZ944880

6	Cartuccia monocomando Mixing valve Kartusche Cartouche mitigeurs Guarnizione per piastra Gasket for plate Dichtung fuer Platte Joint pour plaque	ZZ931970
7	Leva per deviazione automatica Lever for automatic diverter Hebel fuer automatische Umstellung Levier pour inverseur automatique	ZZ944980
8-1	Grano punta plana inox M.4x4 Screw-stainless steel M.4x4 Madenschraube M.4x4 Vis speciale inox M.4x4	ZZ933280
9	Guarnizione fibra 18,5x11x2 Gasket rubber 18,5x11x2 Fiberdichtung 18,5x11x2 Joint en fibre 18,5x11x2	ZZ927140
10	Flessibile 350 G.3/8"F x G.1/2"F Flex 350 G.3/8"F x G.1/2"F Anschluss Schlauch 350 G.3/8"F x G.1/2"F Flex 350 G.3/8"F x G.1/2"F	ZZ944930

11	Flessibile 350 M.11x1M x G.1/2"F 9 Flex 350 M.11x1M x G.1/2"F 9 Anschlusschl.350 M.11x1M x G.1/2"F 9 Flex 350 M.11x1M x G.1/2"F 9 Flessibile 270 G.3/8"F x M.11x1M Flex 270 G.3/8"F x M.11x1M Anschlusschl.270 G.3/8"F x M.11x1M Flex 270 G.3/8"F x M.11x1M	ZZ944990
12	Valvola deviatrice Diverter's valve Umstellventil Cartouche pour inverseur	ZZ945000
13	Supporto doccia Shower holder Brausehalter Support de douche	ZZ945010
14-1	Grano punta coppa inox M.6x6 Screw-stainless steel M.6x6 Madenschraube M.6x6 Vis speciale inox M.6x6	ZZ933370

WA000210

<https://en.cisal.it/concealed-single-lever-bath-shower-valve-wavewa000210>

2024-04-28