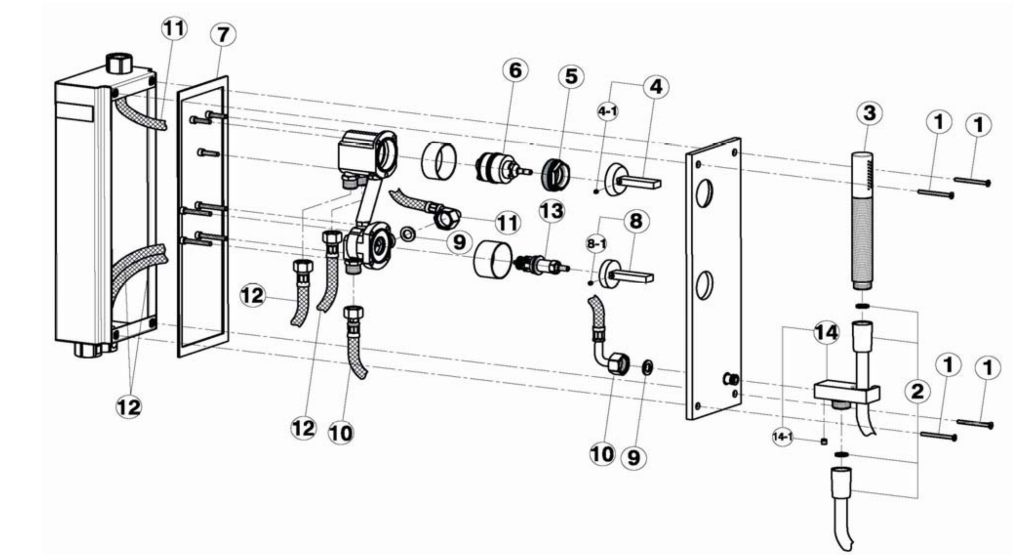
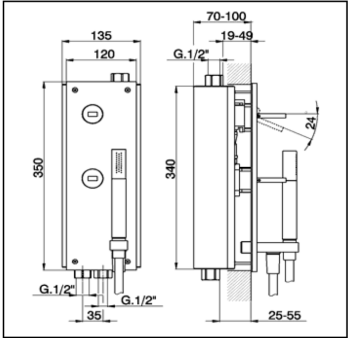


Concealed single lever bath-shower valve **WAVE_WA000210**

cisal

WA 00021



NR.	DESCRIZIONE DESCRIPTION BESCHREIBUNG DESCRIPTION	N.CODE CODE NO. WERSKNR. NR.CODE	NR.	DESCRIZIONE DESCRIPTION BESCHREIBUNG DESCRIPTION	N.CODE CODE NO. WERSKNR. NR.CODE	NR.	DESCRIZIONE DESCRIPTION BESCHREIBUNG DESCRIPTION	N.CODE CODE NO. WERSKNR. NR.CODE
	Vite M.4x45			Cartuccia monocomando			Flessibile 350 M.11x1M x G.1/2"F 9	
1	Screw M.4x45	ZZ944920	6	Mixing valve	ZZ931970	11	Flex 350 M.11x1M x G.1/2"F 9	ZZ944990
	Schraube M.4x45			Kartusche			Anschlusschl.350 M.11x1M x G.1/2"F 9	
	Vis M.4x45			Cartouche mitigeurs			Flex 350 M.11x1M x G.1/2"F 9	
2	Flex PVC 150 cm Ø14 1/2"x1/2" conico	ZZ933040	7	Guarnizione per piastra	ZZ944970	12	Flessibile 270 G.3/8"F x M.11x1M	ZZ944940
	Braueschl. PVC 150 cm Ø14 1/2"x1/2"			Gasket for plate			Flex 270 G.3/8"F x M.11x1M	
	Flex.PVC 150 cm Ø14 1/2"x1/2"			Dichtung fuer Platte			Anschlusschl.270 G.3/8"F x M.11x1M	
	Doccia minimale			Joint pour plaque			Flex 270 G.3/8"F x M.11x1M	
3	Minimal handshower	DS014090		Leva per deviazione automatica		13	Valvola deviatrice	ZZ945000
	Handbrause minimal		8	Lever for automatic diverter	ZZ944980		Diverter's valve	
	Douchette minimal			Hebel fuer automatische Umstellung			Umstellventil	
	Leva monocomando "WA"			Levier pour inverseur automatique			Cartouche pour inverseur	
4	Lever "WA"	ZZ944870		Grano punta piana inox M.4x4		14	Supporto doccia	ZZ945010
	Hebel "WA"		8-1	Screw-stainless steel M.4x4	ZZ933280		Shower holder	
	Levier "WA"			Madenschraube M.4x4			Brausehalter	
	Grano punta piana inox M.4x4			Vis speciale inox M.4x4			Support de douche	
4-1	Screw-stainless steel M.4x4	ZZ933280		Guarnizione fibra 18,5x11x2			Grano punta coppa inox M.6x6	
	Madenschraube M.4x4		9	Gasket rubber 18,5x11x2	ZZ927140	14-1	Screw-stainless steel M.6x6	ZZ933370
	Vis speciale inox M.4x4			Fiberdichtung 18,5x11x2			Madenschraube M.6x6	
	Calotta bloccaggio cartuccia			Joint en fibre 18,5x11x2			Vis speciale inox M.6x6	
5	Nut for mixing valve	ZZ944880		Flessibile 350 G.3/8"F x G.1/2"F	ZZ944930			
	Mutter f/Kartusche		10	Flex 350 G.3/8"F x G.1/2"F				
	Ecrou pour cartouche			Anschluss Schlauch 350 G.3/8"F x G.1/2"F				
				Flex 350 G.3/8"F x G.1/2"F				

WA000210

<https://en.cisal.it/concealed-single-lever-bath-shower-valve-wavewa000210>

2024-05-11