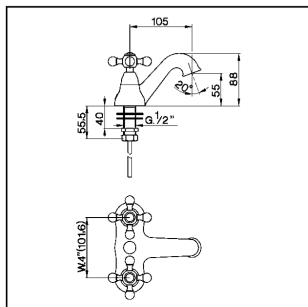


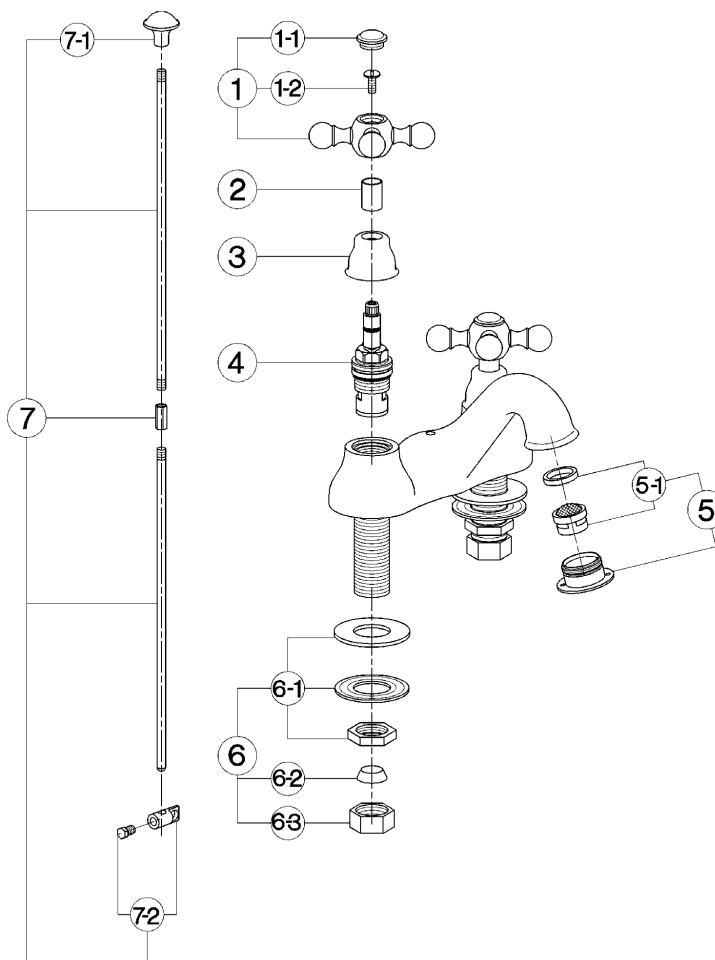
Washbasin monoblock mixer 4 ARCANA CERAMIC_AC000950

cisal

AC 00095



- Batteria lavabo 4"
- 4" wash basin mixer
- Waschtischbatterie 4"
- Mélangeur lavabo 4"



bar	PORTATA BOCCA DI EROGAZIONE * SPOUT FLOW RATE DURCHFLOSS WANNENEINLAUF DÉBIT BEC DEVERSEUR l/min.
0,5	9
1	13
2	18
3	22
4	25.5
5	28.5

* con resistenza silenziosa della classe di portata B (25.2 l/min. a 3 bar)
with hydraulic resistance of flow rate class B (25.2 l/min. at 3 bar)
mit geräuscharmen Widerstand der Durchflussklasse B (25.2 l/min. bei 3 bar)
avec aérateur classe B (25.2 l/min. à 3 bar)

NR.	DESCRIZIONE DESCRIPTION BESCHREIBUNG DÉSCRIPTION	N. CODICE CODE NO. WERKSNR. NR. CODE	NR.	DESCRIZIONE DESCRIPTION BESCHREIBUNG DÉSCRIPTION	N. CODICE CODE NO. WERKSNR. NR. CODE	NR.	DESCRIZIONE DESCRIPTION BESCHREIBUNG DÉSCRIPTION	N. CODICE CODE NO. WERKSNR. NR. CODE
1	Maniglia "AR" con vite e placchetta Handle with screw and plate "AR" Griff "AR" mit Schraube und Abdeckkappe Crosillon avec vis et plaque "AR"	ZZ 90307 0	5	Bordino con aeratore M. 24x1 "AR" Overfill with mousseur M.24x1 "AR" Perlator M.24x1 "AR" Garniture avec mousseur M.24x1 "AR"	ZZ 92785 0	7	Astina scarico 2 pezzi per batteria 4" "AR" Rod for 4" basin mixer "AR" Zugstange 4" Batterie "AR" Tige mélangeur 4" "AR"	ZZ 92787 0
1-1	Placchetta a vite maniglia "AR" Cap for handle "AR" Abdeckkappe "AR" Griff Plaque cache - vis crois. "AR"	ZZ 92617 0	5-1	Cartuccia per aeratore M. 24x1 Mousseur cartridge M.24x1 Kar. 1/Perlator M.24x1 Cartouche x mousseur M.24x1	ZZ 92695 0	7-1	Pomolo per astina batteria 4" "AR" Knob for pop-up rod 4" "AR" Zugknopf 1/Ablaufgam. 4" "AR" Pommeau - lige 4" "AR"	ZZ 92683 0
1-2	Vite M.4,5x10 lb. tc. zigrinata Screw M.4,5x10 Schraube M.4,5x10 Vis M.4,5x10	ZZ 92609 0	6	Set installazione batteria 4" Installation set 4" basin mixer Befestigungssat 4" Batterie Set installation mélangeur 4"	ZZ 92744 0	7-2	Morsetto astina scarico automatico Ø5,2 Connection for pop-up rod Ø5,2 Gelenkstück 1/Zugstange Ø5,2 Jonction x tige vidage Ø5,2	ZZ 92638 0
2	Tubetto copriasta "AR" H.15,5 Sliding cover tube "AR" H.15,5 Abdeckkappe Oberteil "AR" H.15,5 Tube couvre-tige "AR" H.15,5	ZZ 92619 0	6-1	Set installazione rubinetto a colonna Installation set deck-mounted tap Befestigungssat Set installation	ZZ 92740 0			
3	Cappuccio coprivite Ø32 H.21 "AC" Escudo Ø32 H.21 "AC" headvalve Abdeckkappe Ø32 H.21 "AC" Rosace couvre-vite Ø32 H.21 "AC"	ZZ 92652 0	6-2	Guarnizione conica NBR 90 SH. 17,8x13,6x6,8 Gasket NBR 90 SH. 17,8x13,6x6,8 Dichtung NBR 90 SH. 17,8x13,6x6,8 Joint conique NBR 90 SH. 17,8x13,6x6,8	ZZ 92688 0			
4	Vilone ceramico DX per monodori e gruppi "AC" Ceramic headvalve 1/2" right "AC"-short Keramikoberteil 1/2"-rechts-"AC"-kurz Tête céramique 1/2" droite "AC"- courte	ZZ 92858 0	6-3	Calotta 1/2" H.10 Ø13,5 Nut 1/2" H.10 Ø13,5 Mutter 1/2" H.10 Ø13,5 Ecrou 1/2" H.10 Ø13,5	ZZ 92612 0			

AC.10

AC000950

<https://en.cisal.it/washbasin-monoblock-mixer-4-arcana-ceramic-ac000950>

2026-04-21