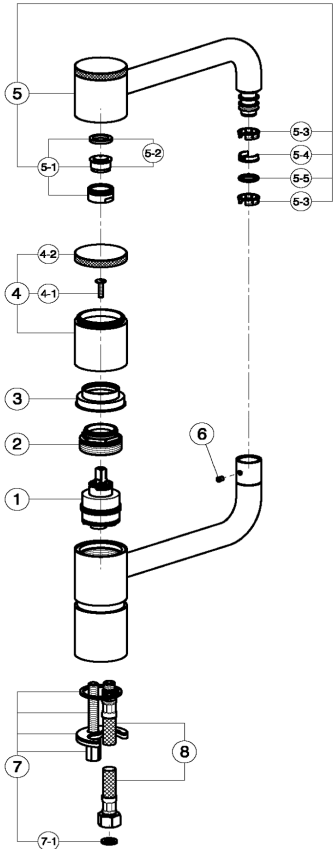
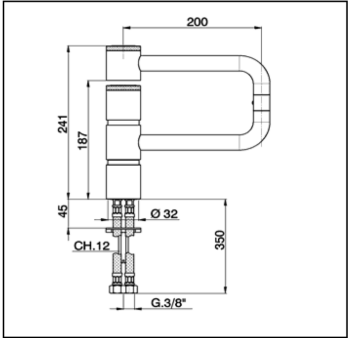


Single lever articulated sink mixer KITCHEN_LC000530

cisal

LC 00053



NR.	DESCRIZIONE DESCRIPTION BESCREIBUNG DESCRIPTION	N.CODICE CODE NO. WERSKNR. NR.CODE
1	Cartuccia monocomando Mixing valve Kartusche Cartouche mitigeurs Calotta bloccaggio cartuccia Nut for mixing valve Mutter f/Kartusche Ecrrou pour cartouche Copicartuccia monocomando Escutcheon cartridge Abdeckkappe Couvre-cartouche	ZZ944160
2	Leva monocomando "LC" Lever "LC" Hebel "LC" Levier "LC"	ZZ937930
3	Vite M.4x17 Screw M.4x17 Schraube M.4x17 Vis M.4x17	ZZ944110
4-1	Piaoch.leva monoc."LC" Cap lever "LC" Abdeckkappe "LC" Plaqueette levier "LC"	ZZ944120
4-2		ZZ933090
4-2		ZZ944130

NR.	DESCRIZIONE DESCRIPTION BESCREIBUNG DESCRIPTION	N.CODICE CODE NO. WERSKNR. NR.CODE
5	Canna sup.monoc.lavel. High spout for single lever sink mixer Oberer Auslauf f.Spültischbatterie Bec sepérieur mitigeur évier Aeratore M24x1 IA Cascade Mousseur M24x1 IA Cascade Perlator M24x1 IA Cascade Mousseur M24x1 Cascade	ZZ944140
5-1	Cartuccia per aeratore M. 24x1 Cascade Mousseur cartridge M.24x1 Cascade Kart. f/Perlator M.24x1 Cascade Cartouche x mousseur M.24x1 Cascade	ZZ944150
5-2	Anello per canna Ring for spout Ring fuer Auslauf Bague pour bec Rondella antifrizione Dichtung fuer Huelse Washer for covering tube Joint pour bague couverture	ZZ933990
5-3		ZZ941020
5-4		ZZ941030
5-5	O.R. 11 NBR 75 SH. O.R. 11 NBR 75 SH. O.R. 11 NBR 75 SH. O.R. 11 NBR 75 SH.	ZZ926900

NR.	DESCRIZIONE DESCRIPTION BESCREIBUNG DESCRIPTION	N.CODICE CODE NO. WERSKNR. NR.CODE
6	Vite M.4x4,5 tc. tc. Screw M.4x4,5 Schraube M.4x4,5 Vis M.4x4,5	ZZ941010
7	Set installazione monoforo Installation set single hole Befestigungsset Set installation Guarnizione fibra 3/8"	ZZ928280
7-1	Gasket rubber 3/8" Fiberdichtung 3/8" Joint en fibre 3/8"	ZZ926960
8	Flexibile M.11x1 3/8" L.365 Flex M.11x1 3/8" L.365 Anschluss Schlauch M.11x1 3/8" L.365 Flex M.11x1 3/8" L.365	ZZ928420

LC000530

<https://en.cisal.it/single-lever-articulated-sink-mixer-kitchenlc000530>

2024-05-02