

Concealed single lever shower valve CLINIC_EL000300

MODEL **EL000300**

Concealed single lever shower valve, with concealed part

AVAILABLE FINISHINGS

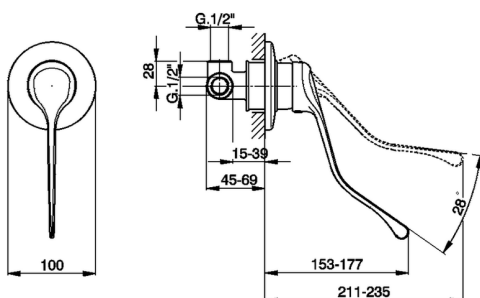


21 21 Chrome

CHARACTERISTICS

Cartridge Spare Parts **ZZ92909000**

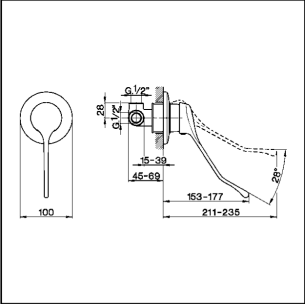
43 mm Cartridge



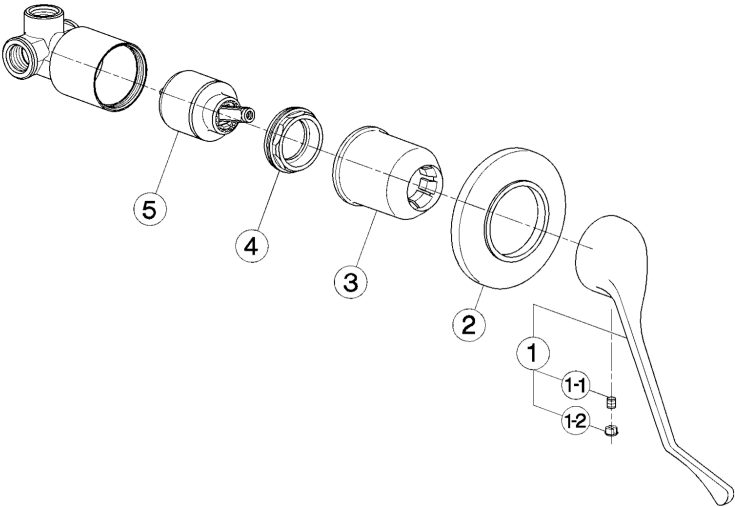
Concealed single lever shower valve CLINIC_EL000300

cisal

EL 00030



- Monocomando doccia incasso
- Single lever concealed shower mixer
- UP-Einhandbrause-batterie
- Mitigeur douche à encastrer



bar	PORTATA * FLOW RATE DURCHFLUSS DEBIT l/min.
0.5	6
1	9
2	12
3	14.5
4	16.5
5	18.5

* con resistenza silenziosa della classe di portata A (15 l/min. a 3 bar)
with hydraulic resistance of flow rate class A (15 l/min. at 3 bar)
mit geräuscharmen Widerstand der Durchflussklasse A (15 l/min. bei 3 bar)
avec aérateur classe A (15 l/min. à 3 bar)

NR.	DESCRIZIONE DESCRIPTION BESCHREIBUNG DESCRIPTION	N. CODICE CODE NO. WERKSNR. NR. CODE	NR.	DESCRIZIONE DESCRIPTION BESCHREIBUNG DESCRIPTION	N. CODICE CODE NO. WERKSNR. NR. CODE	NR.	DESCRIZIONE DESCRIPTION BESCHREIBUNG DESCRIPTION	N. CODICE CODE NO. WERKSNR. NR. CODE
1	Leva clinica universale per monocomando Lever for clinic mixer Hebel V/Clinic Armaturen Levier longue	ZA 00500 0	5	Cartuccia monocomando piccola Mixing valve - small size Kartusche Cartouche mitigeurs	ZZ 92909 0			
1-1	Grano punta plana inox M.6x6 Screw-stainless steel M.6x6 Mädenschraube M.6x6 Vis speciale inox M.6x6	ZZ 92645 0						
1-2	Placchetta per leva Cap for lever Abdeckklappe V/Hebel Plaquelette levier	ZZ 92710 0						
2	Piastra monocomando doccia incasso "EU" Plate single lever shower mixer "EU" Abdeckrossette UP - Brause "EU" Plaque - douche à encastrer "EU"	ZZ 92853 0						
3	Copricartuccia monocomando incasso Escutcheon concealed mixer Abdeckklappe V/UP-EHM Couvere-cartouche mitigeur encastré	ZZ 92720 0						
4	Calotta bloccaggio cartuccia piccola Nut for mixing valve-small Mutter V/Kartusche Ecrou pour cartouche	ZZ 92603 0						

EL.3

EL000300

<https://en.cisal.it/concealed-single-lever-shower-valve-clinicel000300>

2024-05-01