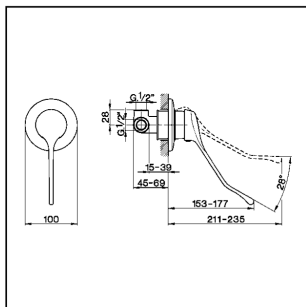


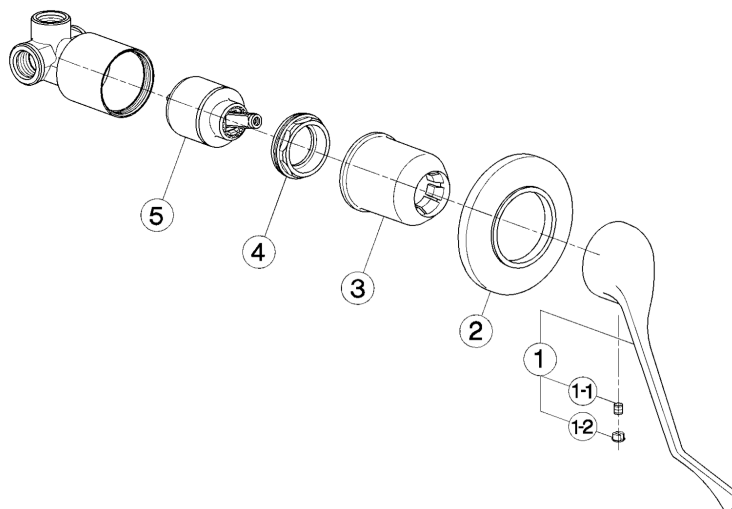
## Concealed single lever shower valve CLINIC\_EL000300

**cisal**

**EL 00030**



- **Monocomando doccia incasso**
- ***Single lever concealed shower mixer***
- **UP-Einhandbrause-batterie**
- ***Mitigeur douche à encastrer***



bar	PORTATA * FLOW RATE DURCHFLOß DEBIT l/min.
0.5	6
1	9
2	12
3	14.5
4	16.5
5	18.5

\* con resistenza silenziosa della classe di portata A (15 l/min. a 3 bar)  
with hydraulic resistance of flow rate class A (15 l/min. at 3 bar)  
mit geräuscharmen Widerstand der Durchflussklasse A (15 l/min. bei 3 bar)  
avec acoustique classe A (15 l/min. à 3 bar)

NR.	DESCRIZIONE DESCRIPTION BESCHREIBUNG DESCRIPTION	N. CODICE CODE NO. WERKSNR. NR. CODE	NR.	DESCRIZIONE DESCRIPTION BESCHREIBUNG DESCRIPTION	N. CODICE CODE NO. WERKSNR. NR. CODE	NR.	DESCRIZIONE DESCRIPTION BESCHREIBUNG DESCRIPTION	N. CODICE CODE NO. WERKSNR. NR. CODE
1	Leva clinica universale per monocomando <i>Lever for clinic mixer</i> Hebel f/Clinic Armaturen <i>Levier longue</i>	ZA 00500 0	5	Cartuccia monocomando piccola <i>Mixing valve - small size</i> Kartusche <i>Cartouche mitigeurs</i>	ZZ 92909 0			
1-1	Grano punta plana inox M.6x6 <i>Screw-stainless steel M.6x6</i> Madenschraube M.6x6 <i>Vis speciale inox M.6x6</i>	ZZ 92645 0						
1-2	Placchetta per leva <i>Cap for lever</i> Abdeckkappe f/Hebel <i>Plaquette lever</i>	ZZ 92710 0						
2	Piastra monocomando doccia incasso "EU" <i>Plate single lever shower mixer "EU"</i> Abdeckschraube UP - Brause "EU" <i>Plaque - douche à encastrer "EU"</i>	ZZ 92853 0						
3	Copricartuccia monocomando incasso <i>Escutcheon concealed mixer</i> Abdeckkappe VUP-EPH <i>Couvre-cartouche mitigeur encastré</i>	ZZ 92720 0						
4	Calotta bloccaggio cartuccia piccola <i>Nut for mixing valve-small</i> Mutter f/Kartusche <i>Ecrou pour cartouche</i>	ZZ 92603 0						

EL.3

EL000300

<https://en.cisal.it/concealed-single-lever-shower-valve-clinice1000300>

2024-05-01