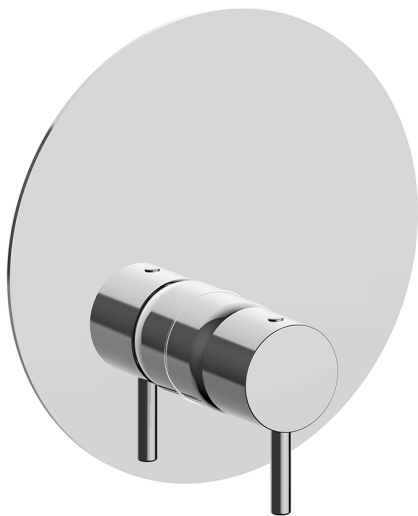


Exposed part for Single Lever One Box Valve SLIM_SM0BM010



MODEL

SM0BM010

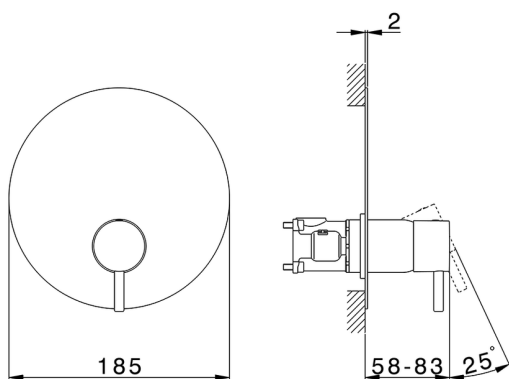
Exposed part for Single Lever One Box Valve, 1
Outlet, Minimum depth of installation: 67 mm, without
concealed part, for items ZA00B030-ZA00B031

AVAILABLE FINISHINGS


21 21 Chrome

2B 2B Polished Nickel

40 40 Matt Black

4Q 4Q Matt White


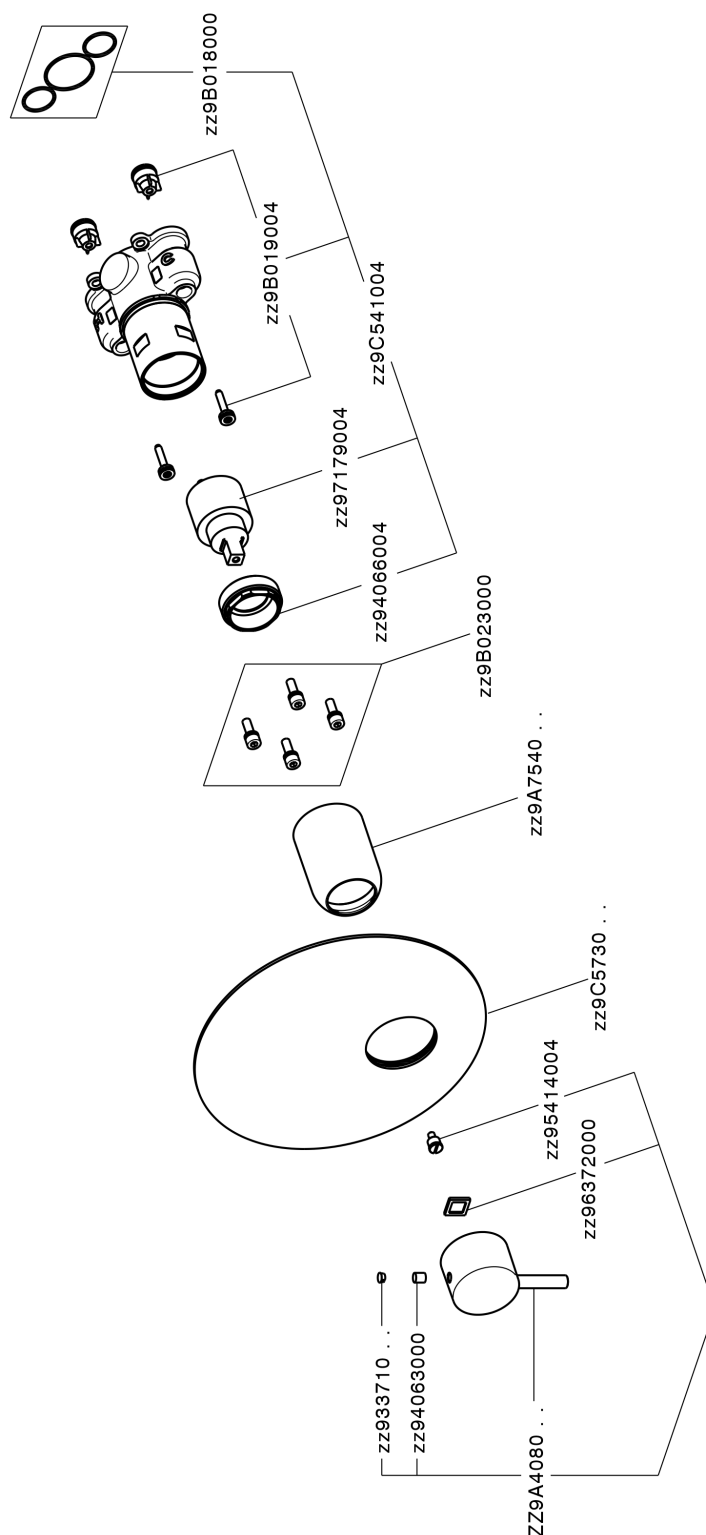
CHARACTERISTICS

 Cartridge Spare Parts **ZZ97179000**
35 mm Cartridge

 Installation **Concealed**

 Required concealed parts **ZA00B031**
ZA00B030


Exposed part for Single Lever One Box Valve SLIM_SM0BM010



SM0BM010

<https://en.cisal.it/exposed-part-for-single-lever-one-box-valve-slim-sm0bm010>

One Box Universal Concealed Part ONE BOX_ZA00B031

MODEL **ZA00B031**

One Box Universal Concealed Part, for 1, 2 or 3 outlet thermostatic or single lever, without trim kit, with noise reducers, with sealing gasket

AVAILABLE FINISHINGS



04 04 Without finishing

CHARACTERISTICS

Concealed **1**



Thermostatic

The Cisal thermostatic is your personal water manager, helping you to handle, control and save water and energy.



One Box Universal Concealed Part ONE BOX_ZA00B030



MODEL **ZA00B030**

One Box Universal Concealed Part, for 1, 2 or 3 outlet thermostatic or single lever, without trim kit, without noise reducers, with sealing gasket

AVAILABLE FINISHINGS



04 04 Without finishing

CHARACTERISTICS

Concealed **1**



Thermostatic

The Cisal thermostatic is your personal water manager, helping you to handle, control and save water and energy.



2025-12-15