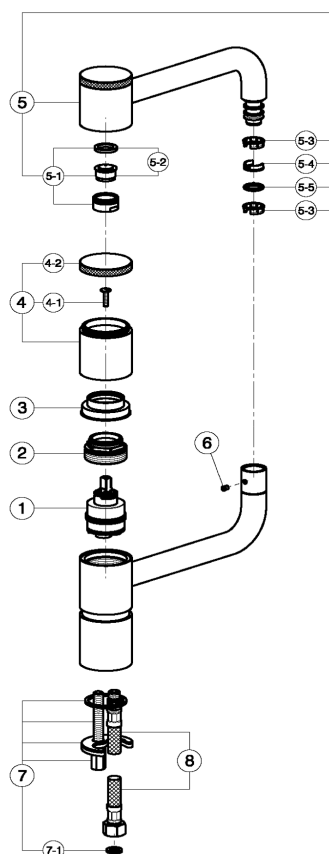
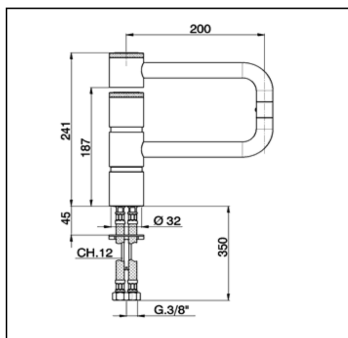


Single lever articulated sink mixer KITCHEN_LC000530

cisal

LC 00053



NR.	DESCRIZIONE DESCRIPTION BESCHREIBUNG DESCRIPTION	N.CODICE CODE NO. WERSKNR. NR.CODE	NR.	DESCRIZIONE DESCRIPTION BESCHREIBUNG DESCRIPTION	N.CODICE CODE NO. WERSKNR. NR.CODE	NR.	DESCRIZIONE DESCRIPTION BESCHREIBUNG DESCRIPTION	N.CODICE CODE NO. WERSKNR. NR.CODE
1	Cartuccia monocomando Mixing valve Kartusche Cartouche mitigeurs Calotta bloccaggio cartuccia	ZZ944160	5	Canna sup.monoc.lavel. High spout for single lever sink mixer Oberer Auslauf f.Spültischbatterie Bec sepérieur mitigeur évier Aeratore M24x1 IA Cascade	ZZ944140	6	Vite M.4x4,5 tc. tc. Screw M.4x4,5 Schraube M.4x4,5 Vis M.4x4,5	ZZ941010
2	Nut for mixing valve Mutter f/Kartusche Ecroi pour cartouche Copicartuccia monocomando	ZZ937930	5-1	Mousseur M24x1 IA Cascade Perlator M24x1 IA Cascade Mousseur M24x1 Cascade	ZZ944150	7	Set installazione monoforo Installation set single hole Befestigungsset Set installation	ZZ928280
3	Escutcheon cartridge Abdeckkappe Couvre-cartouche	ZZ944110	5-2	Cartuccia per aeratore M. 24x1 Cascade Mousseur cartridge M.24x1 Cascade Kart. f/Perlator M.24x1 Cascade Cartouche x mousseur M.24x1 Cascade	ZZ933990	7-1	Guarnizione fibra 3/8" Gasket rubber 3/8" Fiberdichtung 3/8" Joint en fibre 3/8"	ZZ926960
4	Leva monocomando "LC" Lever "LC" Hebel "LC" Levier "LC"	ZZ944120	5-3	Anello per canna Ring for spout Ring fuer Auslauf Bague pour bec	ZZ941020	8	Flexibile M.11x1 3/8" L.365 Flex M.11x1 3/8" L.365 Anschluss Schlauch M.11x1 3/8" L.365 Flex M.11x1 3/8" L.365	ZZ928420
4-1	Vite M.4x17 Screw M.4x17 Schraube M.4x17 Vis M.4x17	ZZ933090	5-4	Rondella antirifazione Dichtung fuer Huelse Washer for covering tube Joint pour bague couverture	ZZ941030			
4-2	Piacch.leva monoc."LC" Cap lever "LC" Abdeckkappe "LC" Plaquette levier "LC"	ZZ944130	5-5	O.R. 11 NBR 75 SH. O.R. 11 NBR 75 SH. O.R. 11 NBR 75 SH. O.R. 11 NBR 75 SH.	ZZ926900			

LC000530

<https://en.cisal.it/single-lever-articulated-sink-mixer-kitchen-lc000530>

2026-04-28