





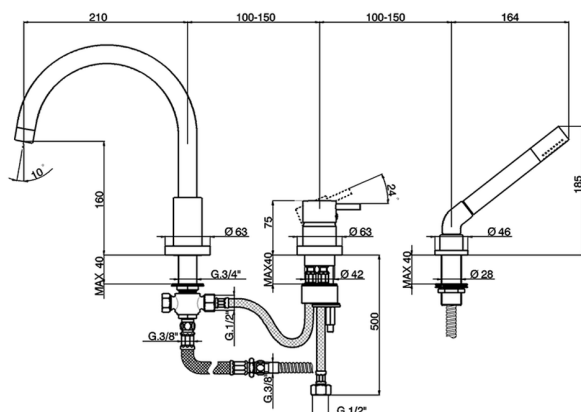
## Deck mounted 3-holes single lever bath mixer NUOVA LESS\_LN001260

MODEL **LN001260**

Deck mounted 3-holes single lever bath mixer, automatic diverter, Brass minimalistic one spray handshower, 175 cm Brass flexible hose

### AVAILABLE FINISHINGS

-  **21** 21 Chrome
-  **2F** 2F Brushed Nickel
-  **40** 40 Matt Black
-  **4Q** 4Q Matt White



### CHARACTERISTICS

Cartridge Spare Parts **ZZ93196000**

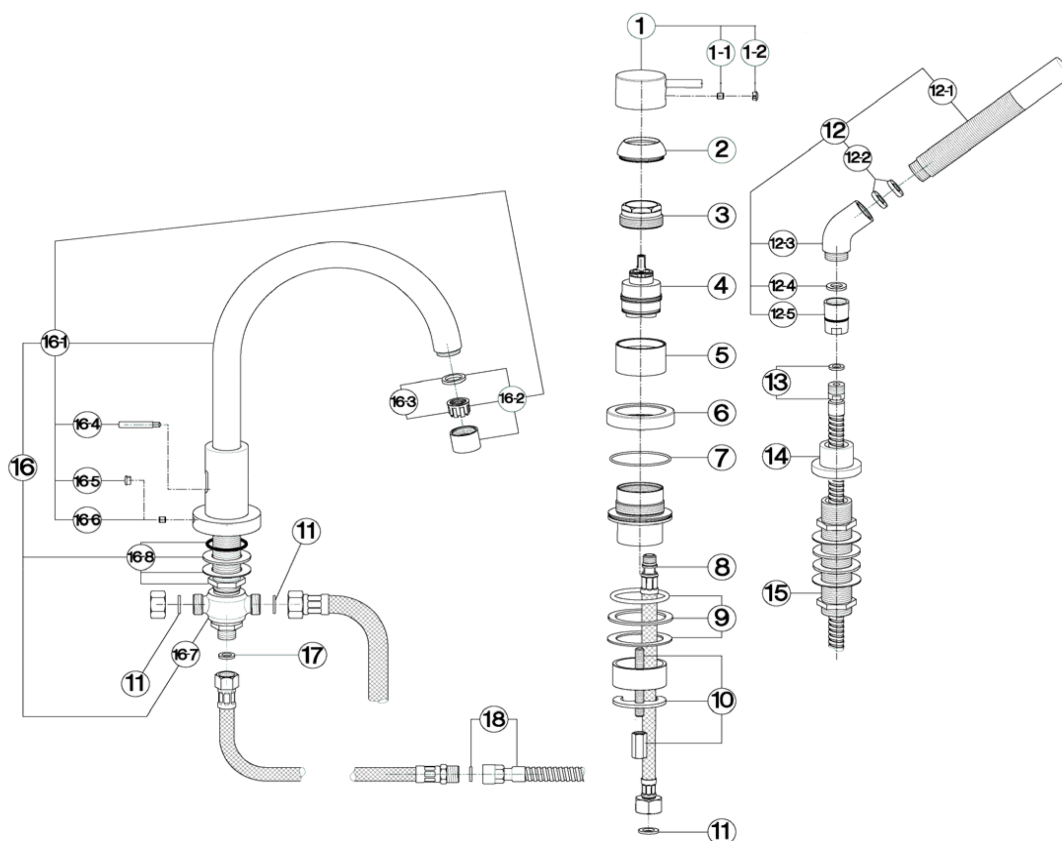
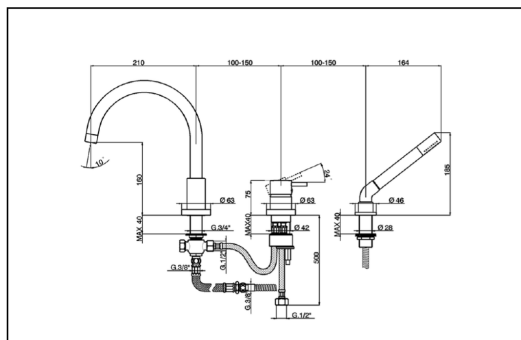
**38 mm Cartridge**



**Deck mounted 3-holes single lever bath mixer NUOVA LESS\_LN001260**

**cisal**

**LN 00126 (LS 00125)**



LN001260

<https://en.cisal.it/deck-mounted-3-holes-single-lever-bath-mixer-nuova-less-lin001260>

## Deck mounted 3-holes single lever bath mixer NUOVA LESS\_LN001260

# cisal

### LN 00126 (LS 00125)

| NR. | DESCRIZIONE<br>DESCRIPTION<br>BESCREIBUNG<br>DESCRIPTION   | N.CODICE<br>CODE NO.<br>WERSKNR.<br>NR.CODE | NR.  | DESCRIZIONE<br>DESCRIPTION<br>BESCREIBUNG<br>DESCRIPTION   | N.CODICE<br>CODE NO.<br>WERSKNR.<br>NR.CODE | NR.  | DESCRIZIONE<br>DESCRIPTION<br>BESCREIBUNG<br>DESCRIPTION  | N.CODICE<br>CODE NO.<br>WERSKNR.<br>NR.CODE |
|-----|--|---|------|--|---|------|---|---|
| 1   | Lever monocomando "LN"<br>Lever "LN"<br>Hebel "LSN"<br>Levier "LN"   | ZZ944240                                    | 10   | Set installaz.monoc.monoforo<br>Installation set single hole<br>Befestigungsset<br>Set installation  | ZZ940810                                    | 16-1 | Bocca senza deviazione<br>Spout without diverter<br>Auslauf ohne Umstellung<br>Bec sans inverseur   | ZZ933630                                    |
| 1-1 | Grano punta plana inox M.6x6<br>Screw-stainless steel M.6x6<br>Madenschraube M.6x6<br>Vis speciale inox M.6x6  | ZZ926450                                    | 11   | Guarnizione fibra 18,5x11x2<br>Gasket rubber 18,5x11x2<br>Fiberdichtung 18,5x11x2<br>Joint en fibre 18,5x11x2                                    | ZZ927140                                    | 16-2 | Rompigetto M.22x1<br>Antisplash M.22x1<br>Strahlregler M.22x1<br>Brise-jet M.22x1   | ZZ936450                                    |
| 1-2 | Placchetta per leva neutra<br>Cap for lever<br>Abdeckkappe f/Hebel<br>Plaquette levier   | ZZ933470                                    | 12   | Doccia minimale per batteria vasca<br>Handshower minimal for bath mixer<br>Handbrause minimal f/Badebatterie<br>Douchette minimal sur gorge      | ZZ933680                                    | 16-3 | Cartuccia per rompigetto M.22x1<br>Cartridge for antisplash M.22x1<br>Kart. f/Strahlregler M.22x1<br>Cartouche x brise-jet M.22x1                           | ZZ936460                                    |
|     |  |   | 12-1 | Doccia minimale<br>Minimal handshower<br>Handbrause minimal<br>Douchette minimal   | DS014090                                    | 16-4 | Pomolo per deviazione bocca batteria vasca<br>Knob for bath spout<br>Zugknopf Umsteller<br>Pommeau x inverseur  | ZZ933650                                    |
| 2   | Copricartuccia monocomando<br>Escutcheon cartridge<br>Abdeckkappe<br>Couvre-cartouche  | ZZ933510                                    | 12-2 | Guarnizione NBR 75 SH. 19,1x10x3,5<br>Gasket NBR 75 SH. 19,1x10x3,5<br>Dichtung NBR 75 SH. 19,1x10x3,5<br>Joint NBR 75 SH. 19,1x10x3,5           | ZZ927150                                    | 16-5 | Placchetta per leva neutra<br>Cap for lever<br>Abdeckkappe f/Hebel<br>Plaquette levier  | ZZ927110                                    |
| 3   | Calotta bloccaggio cartuccia<br>Nut for mixing valve<br>Mutter f/Kartusche<br>Ecrou pour cartouche   | ZZ933530                                    | 12-3 | Curvetta doccia batteria vasca<br>Connection for handshower<br>Brausewinkel f/WB<br>Raccord douche s/gorge                                       | ZZ926010                                    | 16-6 | Grano punta plana inox M.6x6<br>Screw-stainless steel M.6x6<br>Madenschraube M.6x6<br>Vis speciale inox M.6x6   | ZZ926450                                    |
| 4   | Cartuccia monocomando<br>Mixing valve<br>Kartusche<br>Cartouche mitigeurs  | ZZ931960                                    | 12-4 | Guarnizione fibra 18,5x11x2<br>Gasket rubber 18,5x11x2<br>Fiberdichtung 18,5x11x2<br>Joint en fibre 18,5x11x2                                    | ZZ927140                                    | 16-7 | Crociera bocca batteria bordo vasca compl<br>Cross connection for bath mixer<br>Verbindungstueck pass. zu SU/AR/AC 26<br>Raccord a croix pour bec sur gorge | ZZ929140                                    |
| 5   | Canotto copricartuccia monocomando vas<br>Tube f/cartridge escutcheon single lever ba<br>Huele f.Abdeckkappe f.Badebatterie<br>Couvre-cartouche mitigeur bain/douche | ZZ933520                                    | 12-5 | Raccordo conico doccia batteria vasca<br>Connection for shower<br>Anschluss<br>Raccord douche s/gorge  | ZZ926800                                    | 16-8 | Set installazione bocca batteria bordo vasc<br>Installation set for deck-mounted spout<br>Befestigungsset<br>Set installation                               | ZZ933660                                    |
| 6   | Basetta per monocomando<br>Assembling ring for single lever mixer<br>Basis fuer Einhebelmischer<br>Bague pour mitigeur   | ZZ946680                                    | 13   | Flessibile 175 cm Ø14 3/8" x M.15x1<br>Flex 175 cm Ø14 3/8" x M.15x1<br>Brauseschlauch 175 cm Ø14 3/8" x M.15x1<br>Flex 175 cm Ø14 3/8" x M.15x1 | ZZ927570                                    | 17   | Guarnizione fibra 3/8"<br>Gasket rubber 3/8"<br>Fiberdichtung 3/8"<br>Joint en fibre 3/8"   | ZZ926960                                    |
| 7   | O.R. 2212- 53,70X1,78 NBR70SH<br>O.R. 2212- 53,70X1,78 NBR70SH<br>O.R. 2212- 53,70X1,78 NBR70SH<br>O.R. 2212- 53,70X1,78 NBR70SH                                     | ZZ946690                                    | 14   | Cappuccio supporto doccia batteria vasca<br>Escutcheon shower<br>Abdeckkappe<br>Rosace douche  | ZZ933670                                    | 18   | Flessibile 175 cm Ø14 3/8" x M.15x1<br>Flex 175 cm Ø14 3/8" x M.15x1<br>Brauseschlauch 175 cm Ø14 3/8" x M.15x1<br>Flex 175 cm Ø14 3/8" x M.15x1            | ZZ927570                                    |
| 8   | Flessibile M.12x1-1/2"F L.500<br>Flex M.12x1-1/2"F L.500<br>Anschlusschlauch M.12x1-1/2"F L.500<br>Flex M.12x1-1/2"F L.500   | ZZ946700                                    | 15   | Supporto doccia batteria bordo vasca "BA"<br>Deck-mounted handshower support "BA"<br>Brausehalter "BA"<br>Support douche "BA"                    | ZZ934020                                    |      |   |   |
| 9   | Set installazione batteria lavabo<br>Installation set basin mixer<br>Befestigungsset<br>Set installation   | ZZ946710                                    | 16   | Bocca batteria vasca senza deviazione<br>Spout bath mixer without diverter<br>Auslauf-WB- ohne Umstellung<br>Bec bain/douche sans inverseur      | ZZ933620                                    |      |   |   |

LN001260

<https://en.cisal.it/deck-mounted-3-holes-single-lever-bath-mixer-nuova-less-ln001260>

2026-02-04