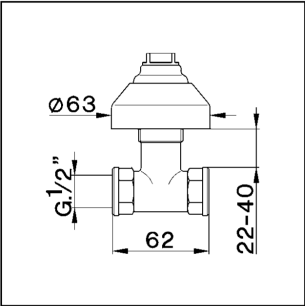


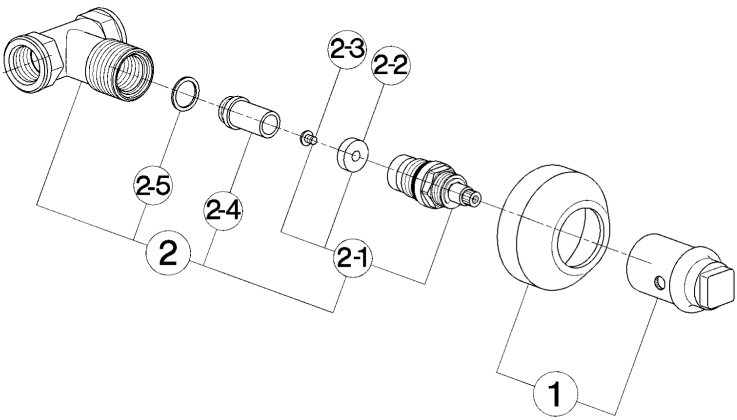
Concealed stop valve COMPONENTS\_ZA000310

cisal

ZA 00031



- Rubinetto incasso
- Concealed valve
- Unterputzventil komplett
- Robinet à encastrer



| bar | PORTATA *<br>FLOW RATE<br>DURCHFLOß<br>DEBIT<br>l/min. |
|-----|--|
| 0.5 | 14.5   |
| 1   | 20.5   |
| 2   | 29   |
| 3   | 35.5   |
| 4   | 41   |
| 5   | 46   |

\* senza resistenza silenziosa (uscita libera)  
without hydraulic resistance  
ohne Widerstand  
sans résistance hydraulique

| NR. | DESCRIZIONE<br>DESCRIPTION<br>BESCHREIBUNG<br>DESCRIPTION  | N. CODICE<br>CODE NO.<br>WERKSNR.<br>NR. CODE | NR. | DESCRIZIONE<br>DESCRIPTION<br>BESCHREIBUNG<br>DESCRIPTION  | N. CODICE<br>CODE NO.<br>WERKSNR.<br>NR. CODE | NR. | DESCRIZIONE<br>DESCRIPTION<br>BESCHREIBUNG<br>DESCRIPTION | N. CODICE<br>CODE NO.<br>WERKSNR.<br>NR. CODE |
|-----|--|---|-----|--|---|-----|---|---|
| 1   | Cappuccio 2 pezzi per rubinetto avv. incasso<br>Escutcheon 2 pieces<br>Abdeckkappe<br>Rosace robinet à encastrer                   | ZZ 90191 0                                    | 2-5 | Guarnizione alluminio cotto 18x14,2x1<br>Gasket aluminium 18x14,2x1<br>Dichtung 18x14,2x1<br>Joint aluminium 18x14,2x1 | ZZ 92667 0                                    |     |   |   |
| 2   | Rubinetto incasso 1/2"<br>Concealed stop cock 1/2"<br>Unterputzventil 1/2"<br>Robinet à encastrer 1/2"                             | ZZ 92732 0                                    |     |  |   |     |   |   |
| 2-1 | Vitone 1/2" "TR"<br>Headvalve 1/2" "TR"<br>Oberteil 1/2" "TR"<br>Tête 1/2" "TR"  | ZZ 92869 0                                    |     |  |   |     |   |   |
| 2-2 | Guarnizione NBR 90 SH. 16.9x5,5x5<br>Gasket NBR 90 SH. 16.9x5,5x5<br>Dichtung NBR 90 SH. 16.9x5,5x5<br>Joint NBR 90 SH. 16.9x5,5x5 | ZZ 92699 0                                    |     |  |   |     |   |   |
| 2-3 | Vite M.4x4,5 tb. 08 t.cr.<br>Screw M.4x4,5<br>Schraube M.4x4,5<br>Vis M.4x4,5  | ZZ 92625 0                                    |     |  |   |     |   |   |
| 2-4 | Seal per rubinetto incasso<br>Seal for concealed stop cock<br>Sitz U/P - Ventil<br>Siège robinet encastrer                         | ZZ 92611 0                                    |     |  |   |     |   |   |

ZA.1

ZA000310

<https://en.cisal.it/concealed-stop-valve-componentsza000310>

2024-05-07