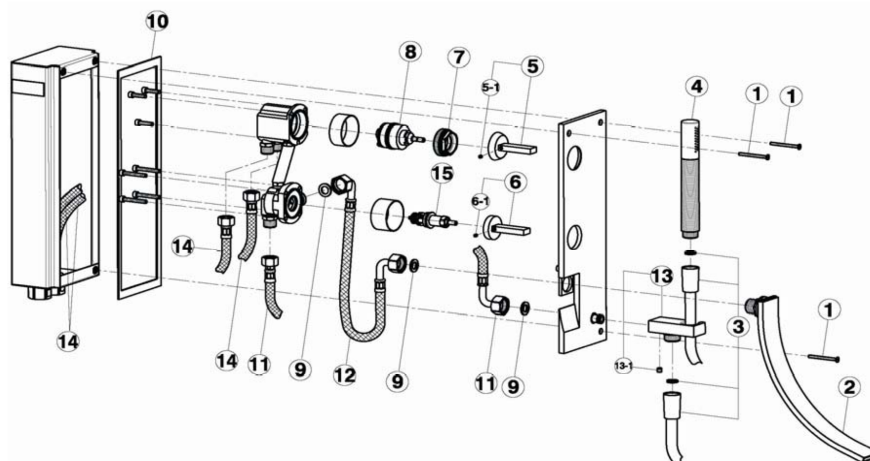
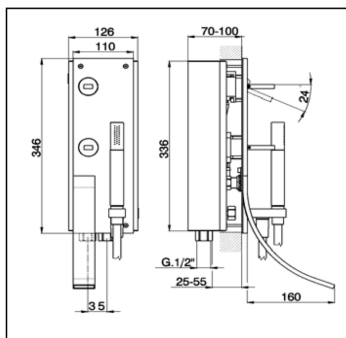


## Concealed single lever bath mixer WAVE\_WA001100

**cisal**

**WA 00110**



| NR. | DESCRIZIONE<br>DESCRIPTION<br>BESCREIBUNG<br>DESCRIPTION  | N.CODE<br>CODE NO.<br>WERSKNR.<br>NR.CODE | NR. | DESCRIZIONE<br>DESCRIPTION<br>BESCREIBUNG<br>DESCRIPTION  | N.CODE<br>CODE NO.<br>WERSKNR.<br>NR.CODE | NR.  | DESCRIZIONE<br>DESCRIPTION<br>BESCREIBUNG<br>DESCRIPTION   | N.CODE<br>CODE NO.<br>WERSKNR.<br>NR.CODE |
|-----|---|---|-----|---|---|------|--|---|
| 1   | Vite M.4x45<br>Screw M.4x45<br>Schraube M.4x45<br>Vis M.4x45  | ZZ944920                                  | 6   | Leva per deviazione automatica<br>Lever for automatic diverter<br>Hebel fuer automatische Umstellung<br>Levier pour inverseur automatique | ZZ944980                                  | 11   | Flessibile 350 G.3/8"F x G.1/2"F<br>Flex 350 G.3/8"F x G.1/2"F<br>Anschluss Schlauch 350 G.3/8"FxG.1/2"F<br>Flex 350 G.3/8"F x G.1/2"F | ZZ944930                                  |
| 2   | Bocca di erogazione<br>Bath spout<br>Wannen einlauf<br>Bec d'eviseur  | ZZ944960                                  | 6-1 | Grano punta plana inox M.4x4<br>Screw-stainless steel M.4x4<br>Madenschraube M.4x4<br>Vis speciale inox M.4x4                             | ZZ933280                                  | 12   | Flessibile 1/2"F 90° 1/2"F 90°<br>Flex 1/2"F 90° 1/2"F 90°<br>Anschluss Schlauch 1/2"F 90° 1/2"F 90°<br>Flex 1/2"F 90° 1/2"F 90°       | ZZ945030                                  |
| 3   | Flex PVC 150 cm Ø14 1/2"x1/2" conico<br>Flex PVC 150 cm Ø14 1/2"x1/2"<br>Braueschl. PVC 150 cm Ø14 1/2"x1/2"<br>Flex.PVC 150 cm Ø14 1/2"x1/2" | ZZ933040                                  | 7   | Calotta bloccaggio cartuccia<br>Nut for mixing valve<br>Mutter f/Kartusche<br>Ecrou pour cartouche  | ZZ944880                                  | 13   | Supporto doccia<br>Shower holder<br>Brausehalter<br>Support de douche  | ZZ945010                                  |
| 4   | Doccia minimale<br>Minimal handshower<br>Handbrause minimal<br>Douchette minimal  | DS014090                                  | 8   | Cartuccia monocomando<br>Mixing valve<br>Kartusche<br>Cartouche mitigeurs   | ZZ931970                                  | 13-1 | Grano punta coppa inox M.6x6<br>Screw-stainless steel M.6x6<br>Madenschraube M.6x6<br>Vis speciale inox M.6x6                          | ZZ933370                                  |
| 5   | Leva monocomando "WA"<br>Lever "WA"<br>Hebel "WA"<br>Levier "WA"  | ZZ944870                                  | 9   | Guarnizione fibra 18,5x11x2<br>Gasket rubber 18,5x11x2<br>Fiberdichtung 18,5x11x2<br>Joint en fibre 18,5x11x2                             | ZZ927140                                  | 14   | Flessibile M.11x1 3/8" L.365<br>Flex M.11x1 3/8" L.365<br>Anschluss Schlauch M.11x1 3/8" L.365<br>Flex M.11x1 3/8" L.365               | ZZ928420                                  |
| 5-1 | Grano punta plana inox M.4x4<br>Screw-stainless steel M.4x4<br>Madenschraube M.4x4<br>Vis speciale inox M.4x4                                 | ZZ933280                                  | 10  | Guarnizione per piastra<br>Gasket for plate<br>Dichtung fuer Platte<br>Joint pour plaque  | ZZ944970                                  |      |  |   |

WA001100

<https://en.cisal.it/concealed-single-lever-bath-mixer-wave-wa001100>

2026-02-03