

## Exposed part for Single Lever One Box Valve ROADSTER ACCENT\_RA0BM030

MODEL

**RA0BM030**

Exposed part for Single Lever One Box Valve, with 2-3 outlet diverter, Minimum depth of installation: 67 mm, without concealed part, for items ZA00B030-ZA00B031

### AVAILABLE FINISHINGS


**21** 21 Chrome

**2B** 2B Polished Nickel

**2F** 2F Brushed Nickel

**2Q** 2Q Black Titanium

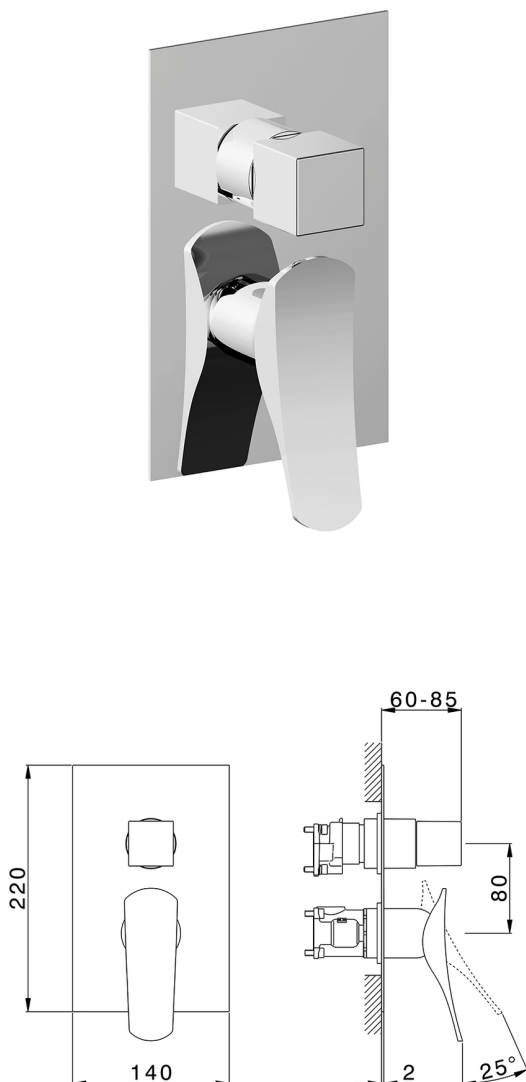
**40** 40 Matt Black

**4Q** 4Q Matt White

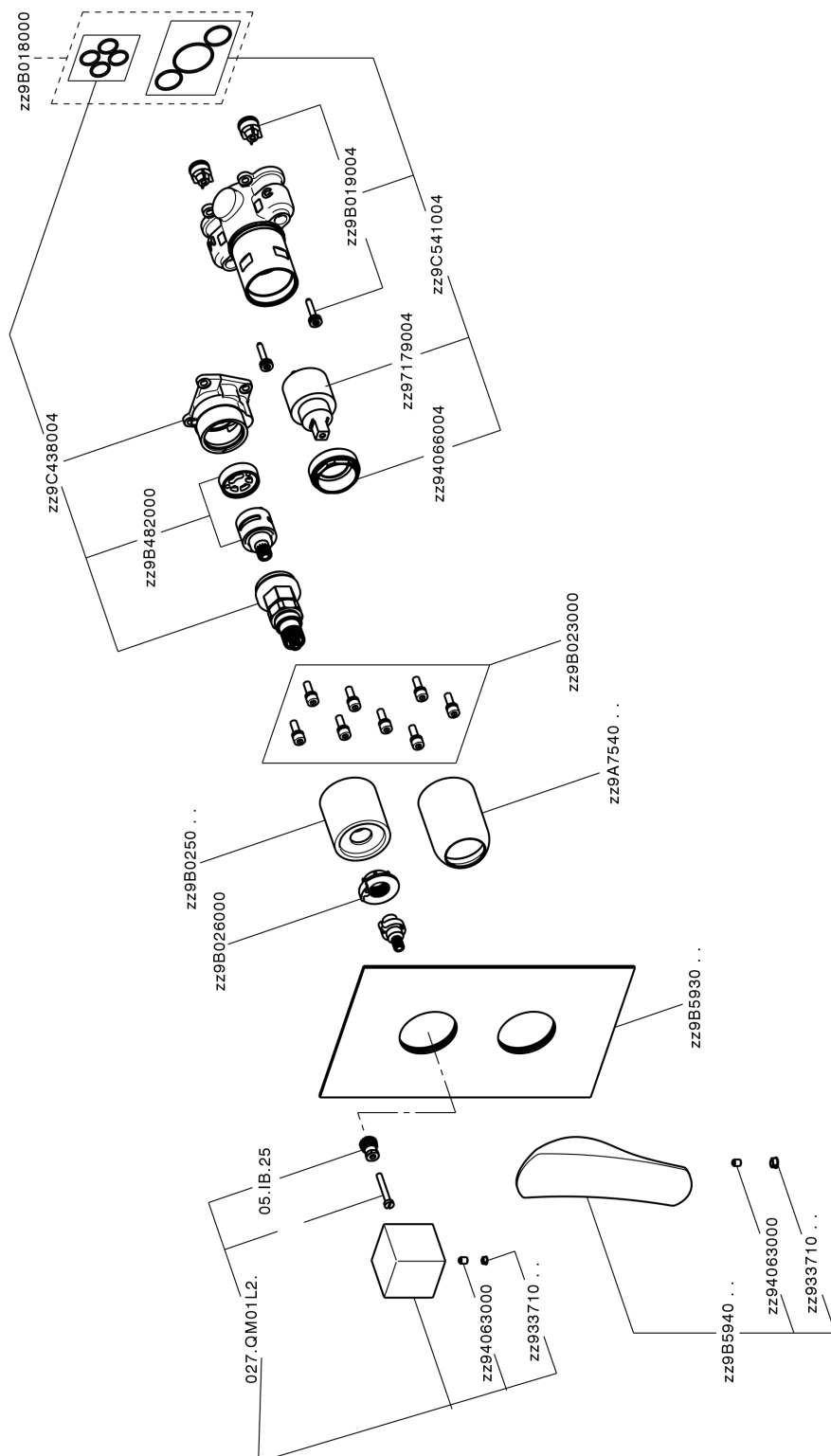
### CHARACTERISTICS

 Cartridge Spare Parts **ZZ97179000**
**35 mm Cartridge**

 Installation **Concealed**

 Required concealed parts **ZA00B031**
**ZA00B030**


## Exposed part for Single Lever One Box Valve ROADSTER ACCENT\_RA0BM030



RA0BM030

<https://en.cisal.it/exposed-part-for-single-lever-one-box-valve-roadster-accent-ra0bm030>

## One Box Universal Concealed Part ONE BOX\_ZA00B031

MODEL **ZA00B031**

One Box Universal Concealed Part, for 1, 2 or 3 outlet thermostatic or single lever, without trim kit, with noise reducers, with sealing gasket

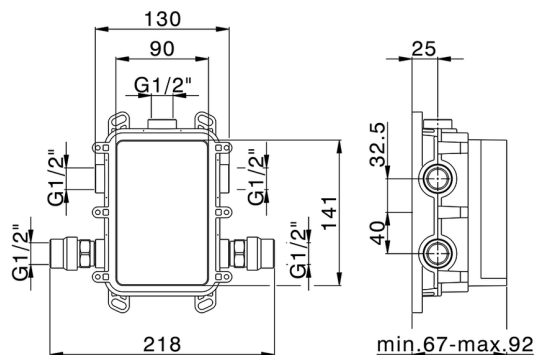
AVAILABLE FINISHINGS



**04** 04 Without finishing

CHARACTERISTICS

Concealed **1**



### Thermostatic

The Cisal thermostatic is your personal water manager, helping you to handle, control and save water and energy.



## One Box Universal Concealed Part ONE BOX\_ZA00B030



MODEL **ZA00B030**

One Box Universal Concealed Part, for 1, 2 or 3 outlet thermostatic or single lever, without trim kit, without noise reducers, with sealing gasket

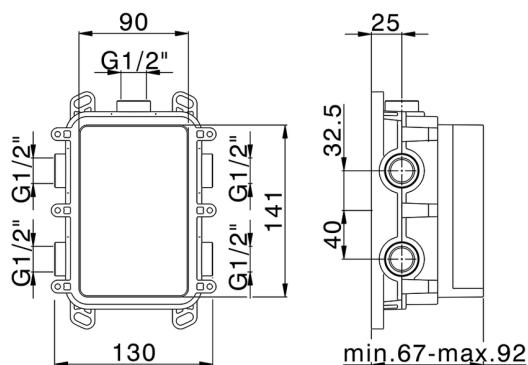
### AVAILABLE FINISHINGS



**04** 04 Without finishing

### CHARACTERISTICS

Concealed **1**



### Thermostatic

The Cisal thermostatic is your personal water manager, helping you to handle, control and save water and energy.



2026-01-09