

Deck-mounted 4-hole bath mixer ARCANA CERAMIC_AC000260

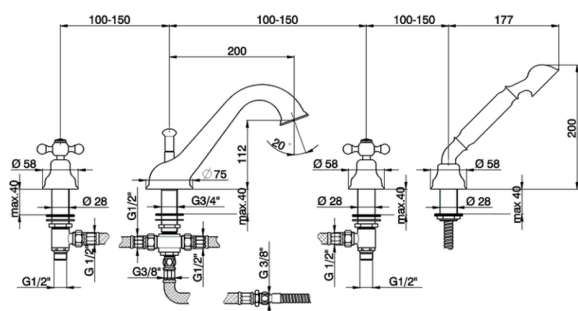
MODEL **AC000260**

Deck-mounted 4-hole bath mixer, 2 outlet diverter, Arcana one spray handshower, 175 cm Brass flexible hose



AVAILABLE FINISHINGS

-  **21** 21 Chrome
-  **24** 24 Gold
-  **26** 26 Old Copper
-  **27** 27 Old Bronze
-  **2A** 2A Satin Brushed Nickel
-  **74** 74 Chrome/Gold



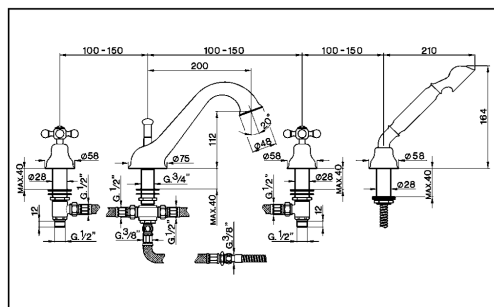
CHARACTERISTICS



Deck-mounted 4-hole bath mixer ARCANA CERAMIC_AC000260

cisal

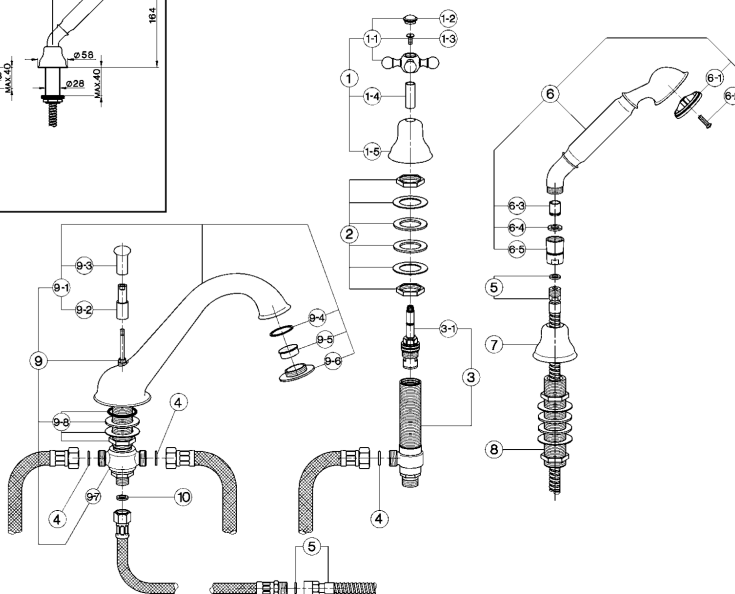
AC 00026 (AC 00025)



- Batteria bordo vasca a 4 fori
- Deck-mounted 4-hole bath mixer
- Badebatterie - 4 Loch -
- Mélangeur B/D 4-trous sur gorge

| bar | PORTATA BOCCA DI EROGAZIONE * SPOUT FLOW RATE DURCHFLOSS WANNENEINLAUF DÉBIT BEC DEVERSEUR l/min. | |
|-----|---|--|
| 0,5 | 21,5 | |
| 1 | 31,5 | |
| 2 | 44,5 | |
| 3 | 55 | |
| 4 | 67,5 | |
| 5 | / | |

* con rompigetto
with antispash
mit Strahlregler
avec brise-jet



| NR. | DESCRIZIONE DESCRIPTION BESCHREIBUNG DESCRIPTION | N. CODICE CODE NO. WERKSNR. NR. CODE | NR. | DESCRIZIONE DESCRIPTION BESCHREIBUNG DESCRIPTION | N. CODICE CODE NO. WERKSNR. NR. CODE | NR. | DESCRIZIONE DESCRIPTION BESCHREIBUNG DESCRIPTION | N. CODICE CODE NO. WERKSNR. NR. CODE |
|-----|--|---|-----|---|---|-----|--|---|
| 1 | Maniglia con cappuccio "AR" Handle with escutcheon "AR" Griff + Abdeckkappe "AR" Crosillon + rosace "AR" | ZZ 90093 0 | 6 | Doccia per batteria vasca "AR" Handshower for bath mixer "AR" Handbrause-WB-"AR" Douchette "AR" sur gorge | ZZ 90336 0 | 9-1 | Bocca batteria vasca "AC" Spout bath mixer "AC" Auslauf-WB-"AC" Bec bain/douche "AC" | ZZ 90944 0 |
| 1-1 | Maniglia "AR" con vite e placchetta Handle with screw and plate "AR" Griff "AR" mit Schraube und Abdeckkappe Crosillon avec vis et plaque "AR" | ZZ 90307 0 | 6-1 | Diffusore doccia "AR" Spray-kit handshower "AR" Einsatz 1/Brause "AR" Diffuseur douchette "AR" | ZZ 90544 0 | 9-2 | Vite bloccaggio bocca batteria vasca Screw for spout Befestigungsschraube Vis x bec sur gorge | ZZ 92648 0 |
| 1-2 | Placchetta a vite maniglia "AR" Cap for handle "AR" Abdeckkappe "AR" Griff Plaque cache - vis crois. "AR" | ZZ 92617 0 | 6-2 | Vite di fissaggio diffusore per doccia in ottone Fixing screw for spray-kit handshower Befestigungsschraube f. Einsatz 1, Br. in Messing Vis fixation diffuseur pour douchette en laiton | ZZ 92640 0 | 9-3 | Pomolo per deviazione bocca batteria vasca Knob for bath spout Zugknopf Umsteller Pommeau x inverseur | ZZ 92649 0 |
| 1-3 | Vite M.4,5x10 lb. tc. zigrinata Screw M.4,5x10 Schraube M.4,5x10 Vis M.4,5x10 | ZZ 92609 0 | 6-2 | Vite di fissaggio diffusore per doccia in ABS Fixing screw for spray-kit ABS handshower Befestigungsschraube f. Einsatz 1, Brause in ABS Vis de fixation diffuseur pour douchette en ABS | ZZ 93401 0 | 9-4 | Guarnizione NBR 70 SH. 32x28,2x1 Dichtung NBR 70 SH. 32x28,2x1 Joint NBR 70 SH. 32x28,2x1 | ZZ 92995 0 |
| 1-4 | Tubetto copriasta "AR" H.31 Tube "AR" H.31 Abdeckkappe Oberteil "AR" H.31 Tube couvre-lête "AR" H.31 | ZZ 92620 0 | 6-3 | Valvola anti-retorno Ø15 per doccia Back-flow valve Ø15 Durchflussverhinderer Ø15 Clapet anti-retour Ø15 | ZZ 92956 0 | 9-5 | Rompigetto per bocca batteria vasca Antispash for bath spout Strahlregler Brise-jet pour bain/douche | ZZ 92897 0 |
| 1-5 | Cappuccio a campana "AR" Escutcheon "AR" Abdeckkappe "AR" Rosace "AR" | ZZ 92598 0 | 6-4 | Guarnizione fibra 18,5x11x2 Gasket rubber 18,5x11x2 Fiberdichtung 18,5x11x2 Joint en fibre 18,5x11x2 | ZZ 92714 0 | 9-6 | Bordino bocca batteria vasca "AR" Overfill bath spout "AR" Kante 1/WB - Auslauf "AR" Garniture B/D "AR" | ZZ 92626 0 |
| 2 | Set installazione batteria lavabo Installation set basin mixer Befestigungssat Set installation | ZZ 92756 0 | 6-5 | Raccordo conico doccia batteria vasca "AR" Connection for shower "AR" Anschluss "AR" Raccord douche s/gorge "AR" | ZZ 90337 0 | 9-7 | Crociera bocca batteria bordo vasca completa Cross connection for bath mixer Verbindungsstück pass. zu SU/AR/AC 26 Raccord a croix pour bec sur gorge | ZZ 92914 0 |
| 3 | Piantana lavabo "AC" (se montata crociera) Tail piece-basin mixer "AC" (mounted conn) Unterteil-WF-"AC" (montiert Kreuzstück) Corp lateral "AC" (raccord à croix) | ZZ 92896 0 | 7 | Cappuccio supporto doccia bordo vasca "AR" Escutcheon shower "AR" Abdeckkappe "AR" Rosace douche "AR" | ZZ 92599 0 | 9-8 | Set installazione bocca batteria bordo vasca Installation set for deck-mounted spout Befestigungssat Set installation | ZZ 92975 0 |
| 3-1 | Vitone ceramico DX per batterie "AC" Ceramic headvalve 1/2" right "AC"-long Keramikoberteil 1/2"-rechts "AC"-lang Tête céramique 1/2" droite "AC"-longue | ZZ 92859 0 | 8 | Supporto doccia batteria bordo vasca "AR" Deck-mounted handshower support "AR" Brausehalter "AR" Support douche "AR" | ZZ 90104 0 | 10 | Guarnizione fibra 3/8" Gasket rubber 3/8" Fiberdichtung 3/8" Joint en fibre 3/8" | ZZ 92696 0 |
| 4 | Guarnizione fibra 18,5x11x2 Gasket rubber 18,5x11x2 Fiberdichtung 18,5x11x2 Joint en fibre 18,5x11x2 | ZZ 92714 0 | 9 | Bocca batteria vasca "AC" con deviazione Spout bath mixer "AC" with diverter Auslauf-WB-"AC" mit Umstellung Bec bain/douche "AC" avec inverseur | ZZ 92048 0 | | | |
| 5 | Flessibile 175 cm Ø14 3/8" x M.15x1 Flex 175 cm Ø14 3/8" M.15x1 Brausschlauch 175 cm Ø14 3/8" x M.15x1 Flex 175 cm Ø14 3/8" x M.15x1 | ZZ 92757 0 | 9 | Bocca batteria vasca "AC" senza deviazione Spout bath mixer "AC" without diverter Auslauf-WB-"AC" ohne Umstellung Bec bain/douche "AC" sans inverseur | ZZ 92054 0 | | | |

AC.2

AC000260

<https://en.cisal.it/deck-mounted-4-hole-bath-mixer-arcana-ceramic-ac000260>

2026-04-29